

GDC

OBJECTIVE

PHARMACIST EXAM AT YOUR FINGERTIPS

Useful For

AIIMS, DSSB, ESIC, Railway, CGHS, ISRO,
NHM, SECL, NTPC, NCL, SEPOY, State and
Central Govt. Pharmacist Examination

Start
Your
Preparation
with us!



Key Features

- ▶ Based on Latest Syllabus
- ▶ Fully Coloured Book
- ▶ 6000+ MCQ Bank
- ▶ 125+ Previous Year MCQs
- ▶ Subjectwise & Topicwise
- ▶ Sequentially MCQs Covering Whole Topics

Boost Your
PHARMACIST
EXAM
preparation!

■ Objective Book

Boost Your **PHARMACIST EXAM** Preparation!

PHARMACIST EXAM AT YOUR FINGERTIPS



Useful For

AIIMS, DSSB, ESIC, Railway, CGHS, ISRO, NHM, SECL, NTPC,
NCL, SEPOY, State and Central Govt. Pharmacist Examination

by

GDC EDITORIAL BOARD



GDC PUBLICATION



GDC Publication

Published by GDC Publication.

A-17, Rajaswa Colony, Ashok Nagar, Sarkanda, Bilaspur (C.G.), 495006

Objective Pharmacist Exam At Your Fingertips

First Edition

ISBN : 978-81-962575-8-3

Price : ₹ 899

Copyright © 2023, By the Author.

No part of this publication may be reproduced or distributed in any form or by any means, electronic, mechanical, photocopying recording, or otherwise or stored in a database or retrieval system without prior written permission of the publisher. The program listings (if any) may be entered, stored and executed in a computer system, but they may not be reproduced for publication.

Information contained in this work has been obtained Gpat Discussion Center Bilaspur, from sources believed to be reliable. However, neither, Gpat Discussion Center nor its authors guarantee the accuracy or completeness of any information published herein, and neither Gpat Discussion Center nor its authors shall be responsible for any error, omissions, or damages arising out of this information. This work is published with the understanding that Gpat Discussion Center and its authors are supplying information but are not attempting to render pharmacy or other professional services. If such services are required, the assistance of an appropriate professional should be sought.



Head office : A-17, Rajaswa Colony, Ashok Nagar, Sarkanda,
Bilaspur (C.G.)
Branch office : Near Ayurvedic College Gate, G.E. Road, Raipur (C.G.)
Branch office : Cross Street 25, Junwani Road, Smriti Nagar, Bhilai (C.G.)

☎ +91-8602227444, +91-9770765680

🌐 www.gdclive.com | www.gdconlinetest.in

✉ gdcgpat037@gmail.com

PREFACE

Welcome to "**Objective Pharmacist Exam Preparation at Your Fingertips**"! This comprehensive objective book has been meticulously crafted to be your ultimate companion in preparing for various Central and State level all pharmacist exams.

Success in Pharmacist examinations depends on proper planning of studies and appropriate selection of study materials. The pattern of examinations become tough. This book cover Previous year topic wise Questions as well as wide spectrum of the Practice multiple-choice questions having a huge variety. Various unique features of the book are as under for example:

- Chapters are classified topic wise based on previous year questions.
- Multiple choice questions in every chapter are arranged in a systematic and sequential way covering the whole text and spectrum of the chapter.
- Answers are provided at the end of every chapters.
- Model Test Papers covering the whole syllabus are also provided at the end of the book again with their answers. These papers will prove to be fit for examination and provide a chance to students in assessing their level of preparation.

The present book is self-sufficient in all respects for question practice.

I am thankful to all my Authors of this book who has put a hard labour in reading the proofs thoroughly and pointing out errors and omissions. Although all attempts have been made to avoid errors and printing mistakes, but omissions are a human weakness and, therefore, constructive suggestions, modifications and errors brought to my notice will be highly appreciated and incorporated in the next edition.

PEEYUSH JAISWAL
Director, GDC

Content

1. PHARMACEUTICS	
✎ Pharmaceutical Technology	5 - 60
✎ Pharmaceutical Engineering	60 - 69
✎ Cosmetic Technology	69 - 71
✎ Dispensing Pharmacy	72 - 82
✎ Physical Pharmacy	82 - 86
✎ Biopharmaceutics	87 - 89
✎ Biotechnology	90 - 91
Pharmaceutics Answer Key	91 - 95
2. PHARMACEUTICAL JURISPRUDENCE	97 - 127
Pharmaceutical Jurisprudence Answer Key	127 - 128
3. PHARMACOLOGY	129 - 259
Pharmacology Answer Key	260 - 264
4. PHARMACOGNOSY	265 - 295
Pharmacognosy Answer Key	295 - 296
5. PHARMACEUTICAL CHEMISTRY	
✎ Physical Chemistry	297 - 300
✎ Inorganic Chemistry	301 - 322
✎ Organic Chemistry	322 - 326
✎ Medicinal Chemistry	326 - 341
✎ Pharmaceutical Analysis	341 - 355
Pharmaceutical Chemistry Answer Key	355 - 357
6. BIOCHEMISTRY AND CLINICAL PATHOLOGY	358 - 386
Biochemistry and Clinical Pathology Answer Key	386 - 387
7. HEALTH EDUCATION AND COMMUNITY PHARMACY	388 - 410
Health Education and Community Pharmacy Answer Key	411 - 412
8. DRUG STORE AND BUSINESS MANAGEMENT	413 - 423
Drug Store and Business Management Answer Key	424 - 424
9. HOSPITAL AND CLINICAL PHARMACY	425 - 436
Hospital and Clinical Pharmacy Answer Key	436 - 437
10. HUMAN ANATOMY AND PHYSIOLOGY	438 - 472
Human Anatomy and Physiology Answer Key	472 - 474
11. MISCELLANEOUS	475 - 550
Miscellaneous Answer Key	550 - 552
12. MODEL PAPER	
✎ Model Paper - 1	553 - 559
✎ Model Paper - 2	560 - 566
✎ Model Paper - 3	567 - 573
✎ Model Paper - 4	574 - 580
✎ Model Paper - 5	581 - 587
Model Paper Answer Key	587 - 588



PHARMACEUTICS

Introduction To Pharmacopoeias

- The first edition of Indian Pharmacopoeia was published in** [RJ PHARMACIST-2012, BCCL PHARMACIST-2013-2015, NCL PHARMACIST-2016, ESIC PHARMACIST-2016, KERALA PHARMACIST-2017, BFUHS MC PHARMACIST-2018, MP PHARMACIST-2020 P-1]
(a) 1955 (b) 1966 (c) 1947 (d) 1945
- Who publish the Indian Pharmacopoeia** [ESIC PHARMACIST-2014]
(a) Central Governor
(b) Central drug laboratory
(c) Ministry of Health and Family Welfare
(d) Central Indian Pharmacopoeial Laboratory
- International pharmacopoeia is published by** [RJ PHARMACIST -2016 P-1, MP PHARMACIST-2020 P-1]
(a) UNCTAD (b) WHO (c) UNICEF (d) UNESCO
- Which of the following provides the best definition of Pharmaceutics** [CGHS BANGALORE PHARMACIST-2019]
(a) It is the study of dosage form design including associated manufacturing techniques
(b) It is the study of the effect that the body has on drug
(c) It is the study of how drugs can be chemically synthesized
(d) It is the study of the effect that drugs have on the body
- IP 2015 incorporates** [HP PHARMACIST-2020, HPSSC PHARMACIST-2020, HAMIRPUR PHARMACIST-2021]
(a) 1550 monographs (b) 2050 monographs
(c) 2550 monographs (d) 3050 monographs
- The first edition of British Pharmacopoeia was published in which year** [HPSSC PHARMACIST-2020, HP - PHARMACIST - 2020, HPSSC PHARMACIST-2022, MHPS C PHARMACIST-2023]
(a) 1854 (b) 1857 (c) 1864 (d) 1867
- Indian Pharmacopoeia uses** [HP - PHARMACIST - 2020, HAMIRPUR PHARMACIST-2021]
(a) Metric system (b) Avoirdupois system
(c) Apothecaries system (d) All of these
- Latest edition of Indian Pharmacopoeia was published in the year** [KERALA PSC PHARMACIST-2015, KERALA PSC PHARMACIST-2015 P-2]
(a) 1996 (b) 2014 (c) 2010 (d) 2007
- The second edition of the Indian Pharmacopoeia was published in** [HPSSB PHARMACIST-2020]
(a) 1947 (b) 1955 (c) 1966 (d) 1975
- In which year the government of India constituted a permanent Indian Pharmacopoeia committee** [HPSSB PHARMACIST-2020]
(a) 1955 (b) 1948 (c) 1960 (d) 1945

Semisolid Dosage Forms

- These ointments are used to relieve itching. Commonly used drugs are benzocaine and coaltar [DL PHARMACIST-2021]
 - Anti eczematous ointments
 - Antipruritic ointments
 - Keratolytic ointments
 - Counter-irritant ointments
- Which one of these paraffin wax is used in eye ointment [RJ PHARMACIST-2011, 2012]
 - White soft paraffin
 - Yellow soft paraffin
 - Hard paraffin
 - None of these
- Which type of base is required for antibiotic ointment [DSSSB PHARMACIST-2019]
 - PEG base
 - Absorption base
 - Hydrocarbon base
 - None of these
- Beeswax is an example of which type of ointment base [HPSSC PHARMACIST-2020, HP PHARMACIST-2020]
 - Hydrocarbon/oleaginous
 - Absorption base
 - Water miscible/removable
 - Water soluble
- Pastes differ from ointment by containing [MP PHARMACIST-2020 P-1]
 - Zinc oxide
 - Paraffin
 - Finely powdered particles
 - Preservatives
- Which is an example of absorption base [MP PHARMACIST-2020 P-2, HAMIRPUR PHARMACIST-2021]
 - Macrogol
 - Coconut oil
 - PEG
 - Wool fat
- Which of the following is an example of an ointment made by chemical reaction [DSSSB PHARMACIST-2021]
 - Ammoniated mercury ointment
 - Calamine ointment
 - Salicylic acid ointment
 - Iodine ointment
- Liquid paraffin is of [ISRO PHARMACIST-2021]
 - Animal origin
 - Mineral origin
 - Synthetic origin
 - Semisynthetic origin
- The base used to stiffen the ointment is [BFUHS MC PHARMACIST-2022]
 - Hard paraffin
 - Wool fat
 - Macrogol
 - Wool Alcohol
- Methyl paraben or propyl paraben may be used in the preparation of ointment as [MHPSC PHARMACIST-2023]
 - A preservative
 - An emulsifier
 - A humectant
 - A chelating agent
- Which is an example of water soluble base [NWR RJ PHARMACIST-2012, HPSSC PHARMACIST-2022]
 - Coconut oil
 - Petrolatum
 - Wool fat
 - PEG
- Fusion method is used for the preparation of [HPSSC PHARMACIST-2018]
 - Ointment
 - Emulsion
 - Suspension
 - Aerosol

59. Saturated steam is better heating agent than air for sterilization because it has [ISRO PHARMACIST - 2018]
- (a) High latent heat (b) High pressure
(c) High sensible heat (d) Low coefficient of expansion
60. Surgical dressings and fabrics can be autoclaved at a temperature of [CGHS HYD PHARMACIST - 2018]
- (a) 150 °C for 60 min (b) 160 °C for 60 min
(c) 121 °C - 122 °C for 15 min (d) 115 °C - 118°C for 30 min
61. Biological Indicator for moist heat sterilization is [BPKMC HOSPITAL PHARMACIST - 2014]
- (a) *Pseudomonas diminuta* (b) *B. subtilis*
(c) *B. stearothermophilus* (d) *B. pumilus*
62. Two methods of sterilization are given for the materials listed from (a) to (d). Match them correctly [AIIMS PHARMACIST- 2012]
- | Method of sterilization | Used to sterilize |
|-------------------------------|------------------------------|
| [P] Dry heat | [I] Rooms |
| [Q] Gamma radiation | [II] Plastic syringes |
| | [III] Takum powder |
| | [IV] Intravenous admixture |
| (a) P-III, Q-II (b) P-II, Q-I | (c) P-IV, Q-I (d) P-III, Q-I |
63. Match the following [ESIC PHARMACIST-2016]
- | Sterilization method | Reference organism |
|---------------------------------|--|
| (P) Moist heat | (I) Spores of <i>Bacillus pumilus</i> |
| (Q) Dry heat | (II) Spores of <i>Bacillus subtilis</i> or <i>Clostridium tetani</i> |
| (R) Ionization radiation | (III) <i>Bacillus stearothermophilus</i> |
| (S) Gaseous sterilization | (IV) Fort detrick strain of <i>Bacillus subtilis</i> |
| (T) Filtration | (V) <i>Pseudomoas diminuta</i> |
| (a) P-III, Q-II, R-I, S-IV, T-V | (b) P-II, Q-I, R-III, S-IV, T-V |
| (c) P-II, Q-I, R-V, S-IV, T-III | (d) P-I, Q-II, R-III, S-IV, T-V |
64. Heating with bactericide method is adopted in [HPSSB PHARMACIST-2020]
- (a) Moist heat sterilization (b) Dry heat sterilization
(c) Sterilization by radiation (d) Gaseous sterilization
65. Which is defined as the process where all the living microorganisms, including bacterial spores are killed [MP PHARMACIST-2020 P-1]
- (a) Decontamination (b) Sterilization (c) Cleaning (d) Disinfection
66. Sterility testing of surgical suture mated requires incubation for period [HAMIRPUR PHARMACIST- 2021]
- (a) 7 days (b) 14 days (c) 28 days (d) 2 months
67. What does a test that verifies a product's absence of live microorganisms look like [MP PHARMACIST 2023 P-1]
- (a) Blood Testing (b) Serum Testing (c) Urine Testing (d) Sterility Testing

Pharmaceutical Biotechnology

- Plasmid is a** [AMC PHARMACIST-2022]

 - Macromolecule involved in the protein synthesis
 - Circular piece of duplex DNA
 - A hybrid DNA that is formed by joining pieces of DNA
 - Endogenous substance secreted by one type of cell
- Which of the following is a technique used for the specific identification of RNA molecules** [DSSSB PHARMACIST-2019 P-2]

 - Western blotting
 - Dot blotting
 - Northern blotting
 - Southern blotting
- Drug obtained by recombinant DNA technology** [SIHFW PHARMACIST-2016, RJ PHARMACIST 2016 P-2]

 - Tetanus toxoid
 - Penicillin
 - Human insulin
 - Zidovudine
- Who introduced the Mutation theory** [RRB PHARMACIST -2019 P-2, RRB PHARMACIST-2019 P-1, PHARMACIST GRADE -III 2013]

 - Von Baer
 - Camillo Golgi
 - Hugo de Vries
 - Edward Jenner
- What is Genetic Code** [CG PHARMACIST- 2015]

 - It is a set of rules to determine how a nucleotide sequence is converted into amino acid sequence of a protein
 - It is a set of rules to determine the segments of DNA that code for functional product
 - It is a set of rules to determine the structure containing DNA that carry hereditary information
 - It is a set of rules to determine the complete base sequence of bacterial chromosomes
- Southern blot is used for sequencing of nucleotide in probe for** [RJ PHARMACIST 2012 P-1]

 - Hybridization of DNA molecule
 - Hybridization of Protein molecule
 - Hybridization of RNA molecule
 - Hybridization of Glycoside molecule
- Restriction endonuclease is used in recombinant DNA technology in reaction** [RJ PHARMACIST 2012 P-1]

 - Type I
 - Type II
 - Type III
 - Type III
- Prophage generation in DNA ligase** [RJ PHARMACIST 2012 P-1]

 - T₄ bacteriophage
 - Virus
 - Bacteria
 - Fungi
- Plasmids are** [HPSSC PHARMACIST-2020, HP PHARMACIST - 2020]

 - Viruses
 - New type of micro-organisms
 - Extra chromosomal genetic element of bacteria
 - None of these



PHARMACEUTICAL JURISPRUDENCE

History of Drug Legislation in India & Pharmacy Act & AICTE Act

1. Who among the following is referred to the Father of Indian Pharmacy [ESIC PHARMACIST-2019]
(a) M. L. Schroff (b) Ashima Chatterjee
(c) R. N. Chopra (d) H. G. Khorana
2. The Pharmacy Act was passed in the year [CCF PHARMACIST-2014, CGHS DL PHARMACIST-2018]
(a) 1948 (b) 1947 (c) 1950 (d) 1965
3. Pharmacy bill introduced by government of India in the year [KERALA PHARMACIST-2018, DSSSB PHARMACIST - 2018]
(a) 1948 (b) 2016 (c) 1940 (d) 1945
4. The first Central Council was constituted by the Central Government in [KERALA PHARMACIST-2019, KERALA PSC PHARMACIST-2020]
(a) 1947 (b) 1948 (c) 1949 (d) 1950
5. Which act aims at raising the status of pharmacy profession in India [BRKM PHARMACIST - 2018]
(a) Pharmacy Act (b) Drugs and Cosmetics Act
(c) DPCO (d) Code of Ethics Act
6. Pharmacy council of India is doing all the below function EXCEPT [AIIMS PHARMACIST- 2012]
(a) To regulate minimum education standard in pharmacy institute
(b) To prescribe the minimum standard of education required as a pharmacist
(c) To compile and maintain central register for pharmacist
(d) To prescribe drugs
7. The main function of State Pharmacy Council is [AIIMS PHARMACIST- 2012]
(a) To grant license for the sale of drugs
(b) To approve pharmacy college of the state
(c) To conduct examinations of pharmacy courses in state
(d) To regulate practice of pharmacy in the state
8. Which of the following is NOT a function of Pharmacy Council of India [MP PHARMACIST 2023 P-2]
(a) To encourage the research and development in pharmacy by providing soft loans to institutions and individuals
(b) To prescribe minimum standard of education required for qualifying as a pharmacist
(c) To ensure uniform implementation of the educational standards throughout the country
(d) To approve qualifications granted outside the territories to which the Pharmacy Act extends i.e., the approval of foreign qualification

127. Which pharmaceutical products is NOT included in schedule C [ESIC PHARMACIST-2016]
 (a) Toxins (b) Sera (c) Antigen (d) Capsule
128. Blood bank comes under the schedule [ESIC PHARMACIST-2016]
 (a) B (b) D (c) F (d) G
129. Grant a licence to manufacture a drug requires [ESIC PHARMACIST-2016]
 (a) Form 24 (b) Form 25 (c) Form 26 (d) Form 27
130. Ampicillin capsule should be used within 24 months, this statement comes under [ESIC PHARMACIST-2016]
 (a) Schedule C (b) Schedule R (c) Schedule M (d) Schedule P
131. Chemist, druggist and drug stores comes under [ESIC PHARMACIST-2016]
 (a) Rule 61 (b) Rule 69 (c) Rule 65 (d) Rule 2
132. Crocin is sold under the schedule [AIIMS PHARMACIST- 2012]
 (a) H (b) G (c) W (d) Y
133. Dettol comes under [AIIMS PHARMACIST- 2012]
 (a) Schedule N (b) Schedule O (c) Schedule P (d) Schedule Q
134. For schedule X drug use of human beings, special labelling requirement is [AIIMS PHARMACIST- 2012]
 (a) Symbol X given in red
 (b) Symbol N in red displayed on left top corner of the label
 (c) Symbol N displayed on the left top corner of the label
 (d) Symbol H displayed on right top corner of the label
135. If "Analgin" is imported under the name of "Aspirin", it will be called [AIIMS PHARMACIST- 2012]
 (a) Adulterated drug (b) Spurious drug
 (c) Misbranded drug (d) Substitute drug
136. Expiry period of drug preparations included in Schedule "P" of the Drug of Drugs & Cosmetics Rules 1945, cannot exceed [AIIMS PHARMACIST- 2012]
 (a) 12 months from date of manufacture
 (b) 24 months from date of manufacture
 (c) 120 months from date of manufacture
 (d) 60 months from date of manufacture
137. Standards of Patent and Proprietary medicines are contained in [AIIMS PHARMACIST- 2012]
 (a) Schedule "O" of Drugs & Cosmetics Rules
 (b) Schedule "P" of Drugs & Cosmetics Rules
 (c) Schedule "U" of Drugs & Cosmetics Rules
 (d) Schedule "V" of Drugs & Cosmetics Rules
138. As per Drugs & Cosmetics Rules 1945 'Cool place' means a place having temperature [AIIMS PHARMACIST- 2012]
 (a) Between 8°C to 25°C (b) Between 4°C to 8°C
 (c) Not exceeding 80°C (d) Not exceeding 8°C

Poisons Act & Medical Termination of Pregnancy Act

- The Poison Act extends to whole of India but is NOT applicable to the ^[IDL PHARMACIST-2021]
 - Union Territories
 - State of Jammu & Kashmir
 - States of Maharashtra and Punjab
 - State of Goa
- A substance deemed to be poisonous as categorised in the Poison Act, 1919, List B is ^[DSSSB PHARMACIST-2019 P-2]
 - Arsenic
 - Potassium cyanide
 - Carbolic acid
 - Aconine
- As per Medical Termination of Pregnancy Act passed in 1971, on advice of one doctor, the abortion of terminally ill foetuses was allowed up to ^[BFUHSMC PHARMACIST-2022]
 - 12 weeks pregnancy
 - 20 weeks pregnancy
 - 22 weeks pregnancy
 - 24 weeks pregnancy
- The registered medical practitioner may terminate a pregnancy, if it does not exceed ^[CG PHARMACIST- 2015]
 - 8 weeks or exceeds 8 weeks but does not exceed 17 weeks
 - 9 weeks or exceeds 9 weeks but does not exceed 16 weeks
 - 12 weeks or exceeds 12 weeks but does not exceed 20 weeks
 - 10 weeks or exceeds 10 weeks but does not exceed 17 weeks
- The poison Act was passed on ^[GDC PRACTICE MCQ]
 - 4th March 1948
 - 3rd September 1919
 - 1st April 1957
 - 20th April 1972
- Unlawful sale of any poison in India is punishable with ^[GDC PRACTICE MCQ]
 - Imprisonment up to three months or fine of five hundred rupees or both
 - Imprisonment up to three years or fine of five thousand rupees or both
 - Imprisonment up to three months or fine of five thousand rupees or both
 - Imprisonment up to three years or fine of five hundred rupees or both
- Who among the following is NOT a power to issue search warrants any poison is possessed or sold in contravention of this Act ^[GDC PRACTICE MCQ]
 - The district magistrate
 - The sub-divisional magistrate
 - The Drug controller
 - The commissioner of police
- When the length of pregnancy exceeds from 12 to 20 weeks, ___ RMP may terminate such pregnancy ^[GDC PRACTICE MCQ]
 - One
 - Two
 - Three
 - Four
- Places approved for termination of pregnancy may be inspected by ^[GDC PRACTICE MCQ]
 - Drug Inspector
 - Chief Medical Officer (CMO)
 - Registered Medical Practitioner
 - None of these



PHARMACOLOGY

General Pharmacology

- The science deals with the interaction of exogenously administered chemical molecules with living system** [KERALA PHARMACIST-2018, DSSSB PHARMACIST-2018]
 - Anthropology
 - Bioinformatics
 - Cheminformatics
 - Pharmacology
- Who discovered Penicillin vaccine** [RRB PHARMACIST -2019]
 - Robert Koch
 - Alexander Fleming
 - Watson and Crick
 - Edward Jenner
- Source of Aspirin is** [MP PHARMACIST-2020 P-2]
 - Plant
 - Mineral
 - Animal
 - Synthetic
- Drug obtained from animal source** [RJ PHARMACIST-2016 P-1]
 - Dicoumarol
 - Heparin
 - Insulin-human
 - Cocaine
- Drugs used for rare diseases are known as** [MP NHM PHARMACIST-2022]
 - Orphan drugs
 - Rare drugs
 - Over the counter drugs
 - Emergency drugs
- An orphan drug is one that has** [HPSSB PHARMACIST-2020]
 - Low therapeutic index
 - Special manufacturer economic
 - Drug with high toxicity
 - Imported drug from foreign
- Which of the following statement best describes an orphan drug** [CGHS BANGALORE PHARMACIST-2019]
 - It is a drug which acts on orphan receptors
 - It is a very cheap drug
 - It is a drug which has no therapeutic use
 - It is a drug required for treatment or prevention of a rare disease
- Which of the following is NOT among the orphan drugs** [CGHS DL PHARMACIST-2018]
 - Sodium thiosulphate
 - Fomepizole
 - Liposomal Amphotericin B
 - Ketoconazole
- Drugs that are obtained if prescribed are known as** [MP PHARMACIST-2020 P-2]
 - Physician sample
 - Placebo
 - OTC drugs
 - Prescription drug
- Hypodermic injections are administered into** [KERALA PHARMACIST-2022]
 - The skin between epidermal and dermal layer
 - Into the tissue of relaxed muscle
 - Into loose connective and adipose tissue immediately beneath the dermal skin layer
 - Into the cardiac muscle

108. Which among the following drug induces hepatic microsomal enzymes

[KERALA PSC PHARMACIST-2015]

- (a) Isoniazid (b) Phenylbutazone
(c) Cimetidine (d) Phenytoin

109. An example for a drug that undergoes extensive first pass metabolism

[NCA PHARMACIST-2015, KERALA PSC PHARMACIST- 2015]

- (a) Testosterone (b) Phenobarbitone
(c) Tolbutamide (d) Theophylline

110. Which among the following is a prodrug [NCA PHARMACIST-2015, KERALA PSC - 2015]

- (a) Levodopa (b) Indomethacin (c) Paracetamol (d) Diphenhydramine

111. Dose and frequency of administration of drug determined by [BCCL PHARMACIST-2013, 2015,

NCL PHARMACIST-2016, BCCL PHARMACIST-2013]

- (a) Dissolution rate (b) Half-life of a drug
(c) Disintegration rate (d) All of these

112. If a drug has repeatedly administered at its plasma half-time interval, then it achieves steady state level in [CCF PHARMACIST-2014]

- (a) 2-3 plasma half-life (b) 4-5 plasma half-life
(c) 6-7 half-life (d) 8-9 half-life

113. Drugs are least excreted in [CCF PHARMACIST-2014]

- (a) Biliary tract (b) Faeces (c) Urine (d) Milk

114. Phase-II biotransformation process is [CCF PHARMACIST-2014]

- (a) Sulfoxide formation (b) Sulphate conjugation
(c) Hydrolysis (d) Oxidation

115. Drugs with low therapeutic index have to be cautiously administered since

[MH PHARMACIST-2012]

- (a) Their median toxic dose is high
(b) They are very potent and have low dose
(c) Difference between effective and toxic levels is less
(d) None of these

116. Appendix II is [ESIC PHARMACIST - 2016]

- (a) Number of animals for long term toxicity
(b) Patient consent form for participation in a phase I clinical trial
(c) Format for submission of clinical trial reports
(d) Four groups of fixed dose combination and their data requirements

117. The dosage required to produce a desired pharmacological effect is called

[MH PHARMACIST-2012]

- (a) Threshold dose (b) Dose-response outcome
(c) Effective dose (d) Maximum dose

118. The methods for dose adjustment are based on an accurate estimation of the _____ in impaired renal patients [RJ PHARMACIST-2012 P-1]

- (a) Clearance (b) Volume of distribution
(c) Area under curve (d) Bioavailability

104. The drug very effective in the treatment of acute gout is [ISRO PHARMACIST-2017]

- (a) Aspirin (b) Acetaminophen
(c) Phenylbutazone (d) Indomethacin

105. Drug use the treatment of gout [BCCL PHARMACIST-2013, 2015, NCL PHARMACIST-2016, BCCL PHARMACIST-2013]

- (a) Colchicum corm (b) Turmeric (c) Ephedra (d) Acacia

Drugs Acting on Respiratory System

1. Astringent compound exhibits the following properties EXCEPT [KERALA PSC PHARMACIST-2021 P-2]

- (a) Styptic (b) Anti-inflammatory
(c) Anti-perspirant (d) Anti-tussive

2. Naphazoline is used in [OSSSC PHARMACIST-2021, ODISHA PHARMACIST - 2023, BCCL PHARMACIST-2013, 2015, NCL PHARMACIST-2016]

- (a) Asthma (b) Hypotension
(c) Nasal congestion (d) Hay fever

3. Narcotic cough suppressant used to relive cough [HPSSB PHARMACIST-2020]

- (a) Codeine (b) Benzoate (c) Astemizole (d) Diphenhydramine

4. A leukotriene receptor antagonist used in allergic cough is [CGHS BANGALORE PHARMACIST-2019, BFUHS PHARMACIST-2018, ESIC PHARMACIST - 2016]

- (a) Rofecoxib (b) Theophylline (c) Losartan (d) Montelukast

5. Methyl morphine is used as [HPSSC PHARMACIST-2018]

- (a) Analeptic (b) Anorexiant (c) Antitussive (d) Antipyretic

6. Salbutamol is a [BFUHS PHARMACIST-2018, ESIC PHARMACIST - 2016]

- (a) Mast cell stabilizer (b) Bronchodilator
(c) Immunosuppressant (d) Antitussive

7. Salbutamol is [OSSSC PHARMACIST-2021, ODISHA PHARMACIST - 2023]

- (a) Non-catecholamine and beta agonist
(b) Catecholamine and beta agonist
(c) Non-catecholamine and alpha agonist
(d) Catecholamine and alpha agonist

8. Which of the following drug is a bronchodilator [CGHS PHARMACIST-2018, CGHS NGP PHARMACIST - 2018]

- (a) Salbutamol (b) Ecosprin (c) Digoxin (d) Ranitidine

9. Centrally acting cough suppressant [KERALA PHARMACIST-2018, DSSSB PHARMACIST - 2018]

- (a) Ambroxol (b) Codeine
(c) Bromhexine (d) Ammonium bicarbonate

10. The main adverse effects of Salbutamol are [MP PHARMACIST-2017]

- (a) Bradycardia and heart block (b) Nausea and vomiting
(c) Diarrhoea and hypotension (d) Palpitation and muscle tremors

11. Mucolytics is/are [ISRO PHARMACIST-2017]

- (a) Bromhexine (b) Carbocisteine (c) Acetylcysteine (d) All of these

12. Dextromethorphan is used in cough syrups as [ISRO PHARMACIST-2017]

- (a) Expectorant (b) Mucolytic (c) Bronchodilator (d) Suppressant

184. Identify the Vitamin resembling a Hormone [ISRO PHARMACIST - 2018]

- (a) Vitamin A (b) Vitamin B₅ (c) Vitamin B₆ (d) Vitamin D

185. Plasma sodium electrolyte disturbances can be caused by [CGHS NGP PHARMACIST - 2018]

- (a) Bromhexine (b) Propranolol (c) Prednisolone (d) Salbutamol

Drugs Acting on Peripheral Nervous System

1. CORRECT statement for Peripheral nervous system is [DL PHARMACIST-2021]

- (a) Afferent nerve fibers convey nerve impulse carrying 'output' from the brain to effector organs
 (b) Motor nerve fibers provide the brain with 'input' from organs and tissues.
 (c) Motor nerve fibers convey nerve impulse carrying 'output' from the brain to effector organs
 (d) Sensory nerve fibers convey nerve impulse carrying 'output' from the brain to effector organs

2. d-Tubocurarine produces skeletal muscle relaxation by inhibiting [BFUHS MC PHARMACIST-2022]

- (a) Nicotinic receptors in neuromuscular junctions
 (b) Ganglionic nicotinic receptors
 (c) Alpha adrenergic receptors
 (d) Muscarinic receptors

3. An example of skeletal muscle relaxant drug directly acting on muscle is [HPSSC PHARMACIST-2022]

- (a) Chlorzoxazone (c) Guanethidine (b) Succinylcholine (d) Dantrolene

4. Centrally acting muscle relaxant [DHS MH PHARMACIST- 2021]

- (a) Halothane (b) d-Tubocurarine (c) Mephenesin (d) Succinyl choline

5. The skeletal muscle relaxant causing significant release of histamine is

[MPNHM PHARMACIST-2022]

- (a) Pancuronium (b) Atracurium (c) Gallamine (d) d-Tubocurarine

6. Which of the following is a peripheral acting muscle relaxant [KERALA PHARMACIST-2019]

- (a) Baclofen (b) Methocarbamol (c) Dantrolene (d) Tizanidine

7. Which of the following drugs is used as a neuromuscular blocking agent

[BFUHS PHARMACIST-2018, ESIC PHARMACIST - 2016]

- (a) Methocarbamol (b) Succinylcholine (c) Tizanidine (d) Baclofen

8. Among the peripherally acting muscle relaxants, depolarizing blocker Which of the following [CGHS DL PHARMACIST-2018]

- (a) Pipecuronium (b) Pancuronium
 (c) Suxamethonium (d) Atracurium

9. Drugs acting directly on the skeletal muscle [APCSCR PHARMACIST-2015]

- (a) Succinyl choline (b) Tubocurarine (c) Gallamine (d) Dantrolene

10. d-Tubocurarine is a [KERALA PSC PHARMACIST-2015]

- (a) Neuromuscular blocking agent (b) Anticholinesterase
 (c) Anaesthetic (d) Neuro degenerative agent

- 309. Highly Vestibulotoxic drug is** [NCL PHARMACIST-2020]
 (a) Cisplatin (b) Streptomycin
 (c) Dihydrostreptomycin (d) Quinine
- 310. Metronidazole can be used for** [DSSSB PHARMACIST-2019]
 (a) Hook worm (b) Round worm (c) Giardiasis (d) Kala azar
- 311. Patients receiving Metronidazole should be advised to** [SIHFW PHARMACIST-2016, RJ PHARMACIST - 2016 P-2]
 (a) Avoid fatty foods (b) Avoid alcohol
 (c) Take alcohol (d) Take fatty foods
- 312. Metronidazole is least likely to be effective in the treatment of** [RRB PHARMACIST - 2015]
 (a) Amoebiasis (b) Giardiasis
 (c) Pneumocystis (d) Pseudomembranous colitis
- 313. All are the side effects of Chloroquine EXCEPT** [ISRO PHARMACIST-2017]
 (a) Blurring of vision (b) Haemolytic anaemia
 (c) Psychotic episodes (d) Skin rash
- 314. Steroidal antibiotic is** [ISRO PHARMACIST-2017]
 (a) Fucidin (b) Bacitracin (c) Aminophylline (d) Clindamycin
- 315. Diethylcarbamazine is the drug of choice in the treatment of** [KERALA PSC - 2015, NCA PHARMACIST-2015]
 (a) Epilepsy (b) Filarial infection
 (c) Hookworm infestation (d) Malaria
- 316. All have beta lactam ring EXCEPT** [KERALA PSC-2015 P-2]
 (a) Penicillin (b) Cefotaxime (c) Linezolid (d) Imipenem
- 317. Adverse effects of Cyclosporine include all of the following EXCEPT** [RJ PHARMACIST - 2012 -P-2]
 (a) Tremor (b) Hirsutism (c) Anorexia (d) Hypokalemia
- 318. Fluconazole is used in the treatment of which of the following** [NWR RJ PHARMACIST - 2012]
 (a) Pemphigus (b) Herpes simplex (c) Candidiasis (d) Syphilis
- 319. Candida infections can be treated with** [BRKM PHARMACIST - 2018]
 (a) Cephalexin (b) Ceftrimide (c) Nystatin (d) None of these
- 320. One of the drugs excreted primarily by renal tubular secretion is** [ISRO PHARMACIST - 2018]
 (a) Gentamicin (b) Kanamycin (c) Tetracycline (d) Carbenicillin
- 321. The Chick-Martin test is used to test the efficiency of** [ESIC PHARMACIST - 2016]
 (a) Coumarins (b) Heparin (c) Antibiotics (d) Blood clotting
- 322. Allergenicity studies are performed by me of a/an** [DSSSB PHARMACIST-2018]
 (a) In-vitro cytogenetic assay (b) In-vivo micronucleus assay
 (c) Dermal toxicity study (d) Guinea-pig maximisation test
- 323. Match the Following** [ESIC PHARMACIST - 2016]
 [P] Microtubule disorientation [I] Flucytosine
 [Q] Inhibiting squalene epoxidase [II] Terbinafine
 [R] Thymidylate synthesis inhibitor [III] Amphotericin B
 [S] Micropore formation with ergosterol [IV] Griseofulvin
 (a) [P]-[I], [Q]-[II], [R]-[III], [S]-[IV] (b) [P]-[II], [Q]-[III], [R]-[I], [S]-[IV]
 (c) [P]-[IV], [Q]-[II], [R]-[I], [S]-[III] (d) [P]-[IV], [Q]-[II], [R]-[III], [S]-[I]



PHARMACOGNOSY

Introduction to Pharmacognosy

1. The term 'Pharmacognosy' was first introduced by ^[MP NHM PHARMACIST-2022]
(a) Pelletier (b) Sertuerner (c) Schmidt (d) Seydler
2. Charaka, a physician belonged to which system of medicine ^[BFUHS MC PHARMACIST-2022]
(a) Unani (b) Siddha (c) Homeopathy (d) Ayurveda
3. In 1815, the term "Pharmacognosy" was used for the first time by _____ in work titled '*Analecta Pharmacognostica*' ^[MP PHARMACIST-2020 P-1]
(a) Hippocrates (b) C.A. Seydler (c) Theophrastus (d) Galen
4. Pharmacognosy is also known as study of _____ ^[MP PHARMACIST-2020 P-1]
(a) Galenicals (b) Drugs from animals
(c) Crude drugs (d) Human Anatomy and Physiology
5. Pharmacognosy is an outgrowth of ^[HPSSB PHARMACIST-2020]
(a) Atharvaveda (b) *Materia Medica* (c) Pharmacopoeia (d) Charak Samhita
6. The major property of Ayurvedic herbs, "Rasa" indicates ^[AMCP PHARMACIST-2022]
(a) Taste (b) Post digestive effect
(c) Potency (d) Physicochemical properties
7. Paka is which type of ayurvedic dosage form ^[HPSSC PHARMACIST-2022]
(a) Solid (b) Semisolid (c) Liquid (d) Powder
8. Alkaline substances obtained from the ash of crude drugs are known as _____ in Ayurveda ^[HPSSC PHARMACIST-2022]
(a) Pisti (b) Bhasma (c) Dravaka (d) Kshara
9. Which of the following traditional medicines is a semisolid dosage form ^[BRKM PHARMACIST-2018, DSSSB PHARMACIST-2021]
(a) Avaleha (b) Asava (c) Vatika (d) Sattva
10. Asava is type of ayurvedic dosage form ^[HAMIRPUR PHARMACIST-2021, HPSSC PHARMACIST-2020]
(a) Solid (b) Semisolid (c) Liquid (d) Powder
11. Thick extracts of drugs prepared by boiling decoction of drug with sugar/honey is _____ ayurvedic dosage form ^[HAMIRPUR PHARMACIST-2021]
(a) Netrabindu (b) Asavas (c) Sattva (d) Avaleha
12. Which of the following is an Ayurvedic preparation containing self-generated alcohol ^[ESIC PHARMACIST-2019]
(a) Ghrita (b) Asava (c) Lehya (d) Gutika

6. **Nicotine from tobacco is an alkaloid which is** [KERALA PSC PHARMACIST-2015, KERALA PSC PHARMACIST-2015 P-2, AMC PHARMACIST-2022]
 (a) Oxygen free liquid (b) Semisolid
 (c) Crystalline (d) Oxygen free solid
7. **Dragendorff's reagent is employed for the identification of** [CGHS BANGALORE PHARMACIST-2019]
 (a) Carbohydrates (b) Alkaloids (c) Flavonoids (d) Proteins
8. **Which one is NOT detected by Dragendorff reagent** [RJ PHARMACIST-2014]
 (a) Vasicine (b) Reserpine (c) Piperine (d) Catechin
9. **Dragendorff's reagent does not give positive test with** [BFUHSMC PHARMACIST-2022]
 (a) Caffeine (b) Morphine (c) Codeine (d) Emetine
10. **What is Wagner's reagent** [RJ PHARMACIST-2014, RJ PHARMACIST - 2011]
 (a) Picric acid (b) Iodine in potassium iodide
 (c) Ammonia solution (d) P - dimethylaminobenzaldehyde
11. **Wagner's test is used to detect the presence of** [BFUHSMC PHARMACIST-2022]
 (a) Alkaloids (b) Steroids (c) Glycosides (d) Terpenes
12. **Saturated solution of picric acid is** [BFUHSMC PHARMACIST-2022]
 (a) Mayer's reagent (b) Wagner's reagent
 (c) Hager's reagent (d) Dragendorff's reagent
13. **Chemically Mayer's reagent is** [RJ PHARMACIST-2014, RJ PHARMACIST - 2011]
 (a) Potassium mercuric iodide (b) Potassium bismuth iodide
 (c) Iodine solution (d) Picric acid
14. **Hager's reagent is** [HPSSB PHARMACIST-2020]
 (a) Potassium mercuric iodide solution (b) Potassium bismuth iodide solution
 (c) Iodine and potassium iodide solution (d) Saturated solution of picric acid
15. **Vitali-Morin test is used to identify** [KERALA PSC PHARMACIST-2015, KERALA PSC PHARMACIST-2015 P-2, BFUHS PHARMACIST-2018, VMC PHARMACIST-2021, BFUHSMC PHARMACIST-2022]
 (a) Indole alkaloids (b) Isoquinoline alkaloids
 (c) Tropane alkaloids (d) Purine alkaloids
16. **Belladonna herbs belongs to the chemical class of** [ESIC PHARMACIST-2019]
 (a) Indole alkaloids (b) Isoquinoline alkaloids
 (c) Tropane alkaloids (d) Quinazoline alkaloids
17. **A tropane alkaloid** [KERALA PSC PHARMACIST-2015, NCA PHARMACIST-2015]
 (a) Atropine (b) Reserpine (c) Ergometrine (d) Diosgenin
18. **Which of the following is a purine alkaloid** [DSSSB PHARMACIST-2019 P-2]
 (a) Caffeine (b) Papaverine (c) Morphine (d) Codeine
19. **Kurchi is a/an** [ESIC PHARMACIST-2019]
 (a) Isoquinoline alkaloid (b) Saponin alkaloid
 (c) Steroidal alkaloid (d) Indole alkaloid
20. **Vincristine is a type of alkaloid** [KERALA PHARMACIST-2019]
 (a) Indole (b) Phenanthrene
 (c) Benzyl isoquinoline (d) Triterpenoid

123. Ergot gives a blue color with alkali [RJ PHARMACIST-2012 P-3]
 (a) Tryptophan residue (b) Indole ring
 (c) Ergotamine (d) Lysergic acid
124. How to extract the alkaloids in mineral salt form from plant [RJ PHARMACIST-2012 P-1]
 (a) Heating with organic solvent
 (b) Boiling with ammonium-hydroxide and water
 (c) Shaking with water containing mineral
 (d) Boiling with water and lead acetate acid
125. What do you do for getting alkaloids in base from the plant material [RJ PHARMACIST-2012 P-1]
 (a) Adding to the powdered drug some mineral acid and water
 (b) Adding some ammonium-hydroxide and water to the pulverised drug
 (c) Making an extract by mineral acid and organic solvent
 (d) Making an extract with some base and organic solvent

Glycosides

1. Non sugar part of the glycosides are called [KERALA PSC PHARMACIST-2015, KERALA PSC PHARMACIST - 2015 P-2]
 (a) Aglycone (b) Glycone (c) Glycogen (d) Glycol
2. Which of the following test is used to detection of glycosides [BFUHS MC PHARMACIST-2022]
 (a) Benedict's test (b) Borntrager's reagent test
 (c) Hager's Reagent test (d) Glucose tolerance test
3. Borntrager test is carried out for identification of [APCSCR PHARMACIST-2015]
 (a) Corticosteroids (b) Quinoline group of drugs glycosides
 (c) Anthraquinone (d) Catecholamine
4. Which is best suited test for the identification of Anthraquinone C-glycosides [KERALA PHARMACIST-2019]
 (a) Borntrager's test (b) Keller Kiliani test
 (c) Foam test (d) Modified Borntrager's test
5. Which one of the following is the basic chemical test to identify anthracene glycosides in Aboes [RRB PHARMACIST-2019 P-2, RRB PHARMACIST-2019 P-1]
 (a) Keller Kiliani test (b) Legal test
 (c) Modified Borntrager test (d) Borntrager test
6. Modified Borntrager's test are used to identify which type of Anthraquinone glycosides [KERALA PSC PHARMACIST-2015, KERALA PSC PHARMACIST-2015 P-2]
 (a) O-glycosides (b) N-glycosides (c) C-glycosides (d) S-glycosides
7. Aboes contain barbaloin which is a [SJ PHARMACIST - 2012]
 (a) C-glycoside (b) S-glycoside (c) D-glycoside (d) H-glycoside

20. Which of the following is an oleogum resin obtained from the stem of *Commiphora* [DSSSB PHARMACIST-2021]
 (a) Ginger (b) Copaiba (c) Myrrh (d) Camphor
21. Siam benzoin differs from Sumatra variety due to the insufficient content of [KERALA PSC PHARMACIST-2015]
 (a) Benzoic acid (b) Cinnamic acid
 (c) Coniferyl alcohol (d) Coniferyl benzoate
22. A resin of animal origin is [HPSSC PHARMACIST-2018, ISRO PHARMACIST-2018, SJ PHARMACIST - 2012]
 (a) Benzoin (b) Shellac (c) Myrrh (d) Copaiba
23. Curcuminoids are present in [HPSSC PHARMACIST-2018, BFUHS PHARMACIST-2018]
 (a) Colchicum (b) Turmeric (c) Cassia (d) Acacia
24. Diarylheptanoid is a chemical constituent of turmeric, this constituent is known as [MP PHARMACIST-2017]
 (a) Curcumin (b) Sabinene
 (c) DL-artermesone (d) Demethoxy curcumin
25. Guggul lipids are obtained from [ESIC PHARMACIST - 2016]
 (a) *Commiphora molmol* (b) *Commiphora weightii*
 (c) *Boswellia serrata* (d) *Commiphora abyssinica*

Carbohydrates

1. General test to identify carbohydrates [BCCL PHARMACIST-2013]
 (a) Mayer's test (b) Millon's test (c) Shinoda test (d) Molisch's test
2. Which of the following is called Indian Gum [KERALA PHARMACIST-2019]
 (a) Colophony (b) Tragacanth (c) Guar gum (d) Acacia
3. Agar is [HPSSC PHARMACIST-2020]
 (a) Pentapolsaccharide (b) Oligopolysaccharide
 (c) Homopolysaccharide (d) Heteropolysaccharide
4. Which of the following is NOT a component of dietary fiber [AIIMS PHARMACIST- 2012]
 (a) Cellulose (b) Pectin (c) Lignin (d) Agar
5. ___ is a carbohydrate containing drug obtained from marine source [ESIC PHARMACIST-2014]
 (a) Agar (b) Honey (c) Acacia (d) Ispaghula
6. Agar is obtained from the [KERALA PSC PHARMACIST-2015, KERALA PSC PHARMACIST-2015 P-2]
 (a) Green algae (b) Blue algae (c) Red algae (d) Blue green algae
7. Viscosity presence of Agar solution is due to the presence of [KERALA PSC PHARMACIST-2015, KERALA PSC PHARMACIST - 2015 P-2]
 (a) Agarose (b) Cellulose (c) Agaropectin (d) Cellobiose
8. Which of the following is a natural vegetable emulsifying agent obtained from marine source [HPSSC PHARMACIST-2018]
 (a) Milk of magnesia (b) Gelatin
 (c) Agar (d) Lecithin



PHARMACEUTICAL CHEMISTRY

PHYSICAL CHEMISTRY

- In an _____ process, temperature is constant throughout the process [DSSSB PHARMACIST - 2019]
(a) Isothermic (b) Isobaric (c) Isotonic (d) Isochoric
- What is the symbol of the element Caesium [RRB PHARMACIST-2019 P-1]
(a) Cm (b) Cs (c) Ca (d) Cu
- The objects in motion on ground level possess _____ energy. (Taking ground level as 0 potential) [RRB PHARMACIST-2019 P-2]
(a) Potential (b) Frictional (c) Kinetic (d) Gravitational
- Reduction in chemical reactions is the [RRB PHARMACIST-2019 P-2]
(a) Gain of oxygen (b) Loss of Hydrogen
(c) Gain of Hydrogen (d) Gain of nitrogen
- Which of the following elements is a diatomic molecule [RRB DEPARTMENTAL PHARMACIST -2019, RRB PHARMACIST-2019 P-2]
(a) Argon (b) Chlorine (c) Phosphorous (d) Sulphur
- Which of the following typically has a low melting point [RJ PHARMACIST-2014, RRB PHARMACIST-2019 P-1]
(a) Metals (b) Nonmetals (c) Metalloids (d) Transition metals
- Which of the following is not an acid [RJ PHARMACIST - 2011]
(a) HNO_3 (b) CH_3COOH (c) H_2SO_4 (d) NaOH
- Bohr's model of the atom was able to accurately explain [RJ PHARMACIST - 2011]
(a) Why spectral lines appear when atoms are heated
(b) The energies of the spectral lines for each element
(c) Why electrons travel in circular orbits around the nucleus
(d) None of these
- 1°A is equal to [RJ PHARMACIST-2014]
(a) 10^{-6} m (b) 10^{-7} m (c) 10^{-8} m (d) 10^{-10} m
- The valency of carbon is [BRKM PHARMACIST - 2018]
(a) 2 (b) 3 (c) 5 (d) 4
- The process in which a solid gets directly converted into vapour is called [KERALA HS PHARMACIST-2015]
(a) Desiccation (b) Sublimation (c) Evaporation (d) Condensation

INORGANIC CHEMISTRY

Limit Test

- Thioglycolic acid is used in the limit test for [RRB PHARMACIST-2019 P-1]
 (a) Iron (b) Chloride (c) Sulphate (d) Lead
- Citric acid is added in the limit test for iron to [KERALA HS PHARMACIST-2015]
 (a) Provide an acidic medium
 (b) To react with iron to produce a purple colour
 (c) To form a complex with iron to prevent precipitation
 (d) To react with acid radicals to prevent precipitation
- Gutzeit apparatus is used for limit test of [HPSSC PHARMACIST-2018, BPUHSMC PHARMACIST-2022]
 (a) Arsenic (b) Iron (c) Sulphate (d) Lead
- In the limit test for Arsenic, the gas which imparts brown stain to mercuric chloride paper is [KERALA PHARMACIST-2017]
 (a) Arsenic oxide (c) Arsenious acid (d) Arsine (b) Arsenic acid
- The citric acid is used in iron limit test [INCL PHARMACIST-2016, BCCL PHARMACIST-2013, 2015]
 (a) To prevent color due to sulphate (b) To prevent color due to copper
 (c) To prevent color due to chloride (d) To prevent color due to lead
- The limit test of Iron depends upon the interaction of iron with [INCA PHARMACIST-2015]
 (a) Barium Sulphate reagent (b) Diphenyl thiocarbazon
 (c) Thioglycolic acid (d) Mercuric Chloride
- The limit test of lead is done using [BRKM PHARMACIST - 2018]
 (a) Acetic acid (b) Dithizone
 (c) Phenol red (d) Thioglycolic acid
- The buffer used in the limit test for iron is [DSSSB PHARMACIST-2019 P-1]
 (a) Sodium acetate (b) Sodium carbonate
 (c) Ammonia and Ammonium chloride (d) Ammonium citrate
- Which one is not the type of heavy metal [RJ PHARMACIST - 2011]
 (a) As (Arsenic) (b) Hg (Mercury) (c) Fe (Iron) (d) Pb (Lead)
- In limit test of chloride, which is compared [HP PHARMACIST - 2020, HAMIRPUR PHARMACIST-2021]
 (a) Turbidity (b) Opalescence (c) Fluorescence (d) Colour
- The lead acetate cotton wool is used in the limit test for arsenic to [ESIC PHARMACIST-2014]
 (a) Make the arsine gas (b) Develop the yellow colour
 (c) Trap the HS gas (d) None of these

14. Sublimation is not a method of purification for [GDC PRACTICE MCQ]
 (a) Ammonium chloride (b) Arsenic trioxide
 (c) Iodine (d) Mercuric chloride
15. Which of following occurs naturally, sulphide called as cinnabar [GDC PRACTICE MCQ]
 (a) Mercury (b) Silver (c) Zinc (d) Arsenic

ORGANIC CHEMISTRY

Classification and Nomenclature of Organic Compounds

1. Carboxyl group is represented [MP PHARMACIST-2020 P-1]
 (a) C=O (b) -COOH (c) -CHO (d) -OH
2. What is the chemical formula of Acetic Acid [CGHS DL PHARMACIST-2018]
 (a) $\text{CH}_3\text{-(CH}_2\text{)}_2\text{-COOH}$ (b) $\text{CH}_3\text{-(CH}_2\text{)}_{14}\text{-COOH}$
 (c) $\text{CH}_3\text{-COOH}$ (d) $\text{CH}_3\text{(CH}_2\text{)}_{16}\text{-COOH}$
3. IUPAC name for the structure $\text{CH}_3\text{-CH}_2\text{-CH}_2\text{-CH}_2\text{-R}$ is [RRB PHARMACIST-2019 P-1]
 (a) n-Ethyl (b) Pentyl (c) Propyl (d) n-Butyl
4. Which of the following is NOT the IUPAC system of nomenclature [UP NHM PHARMACIST 2023]
 (a) 1-Butene (b) 2-Methyl propene
 (c) Isobutene (d) 2-Butene
5. Chlorocresol groups attached to it, has following functional group [HAMIRPUR PHARMACIST-2021]
 (a) Two methyl groups, two Hydroxyl groups and two chlorines
 (b) Two methyl groups, two hydroxy group and one chlorine
 (c) Two methyl groups, one Hydroxyl group and one chlorine
 (d) One methyl group, one Hydroxyl group and one chlorine
6. The characteristic ending 'ol' is for alcohols, phenols, naphthol. Similarly, the ending - "al" for [DL PHARMACIST-2021]
 (a) Carbohydrates (b) Carboxylic acid (c) Aldehyde (d) Ketone
7. Which of the following is the chief constituent of vinegar [UP NHM PHARMACIST-2023]
 (a) Acetaldehyde (b) Acetic acid (c) Methane (d) Ethane
8. Find the odd one among the following [GDC PRACTICE MCQ]
 (a) Alicyclic compounds (b) Heterogeneous compounds
 (c) Branched chain compounds (d) Aromatic compounds
9. Pick out the option that is NOT a functional group from the following [GDC PRACTICE MCQ]
 (a) Hydroxyl group (b) Benzene group
 (c) Aldehyde group (d) Carboxylic acid group

11. What does McLafferty rearrangement involve [CG PHARMACIST- 2015]
- Migration of γ -Hydrogen atom followed by cleavage of β bond
 - Migration of groups heavier than Hydrogen
 - Cleavage of two bonds of a cyclic system
 - Cleavage of carbon-carbon bond which is β to aromatic ring
12. In case of Delocalization, one of the following is TRUE about Ethylene [DL PHARMACIST-2021]
- Although the three annular carbon atoms are bonded to each other via sp^2 orbitals, the resultant molecule does not behave as saturated compound
 - The six annular carbon atoms are bonded to each other via sp orbitals, the resultant molecule does behave as an unsaturated compound
 - Although the six annular carbon atoms are bonded to each other via sp^2 orbitals, the resultant molecule does not behave as an saturated compound
 - The four annular carbon atoms are bonded to each other via sp^2 orbitals, the resultant molecule does not behave as an unsaturated compound
13. When a ketonic group attached to a chiral centre undergoes nucleophilic addition with a metal hydride reagent, the relative configuration of the predominant isomer is predicted by [JRS SCIENTIFIC OCEL PHARMACIST-2015]
- Mills rule
 - Cram's rule
 - Distance rule
 - Displacement rule
14. Carboxylic acid having alpha Hydrogen atom replaced by chlorine in presence of phosphorus is known as [APCSCR PHARMACIST-2015]
- Hell-Volhard Zelinsky reaction
 - Etard's reaction
 - Perkin reaction
 - Wurtz reaction
15. Uric acid on mild oxidation with nitric acid gives [CG PHARMACIST- 2015]
- Urea and Hydantoin
 - Urea and mesoxalic acid
 - Allantoin and carbon dioxide
 - Urea and alloxan

MEDICINAL CHEMISTRY

Introduction

1. Which of the following is NOT a QSAR Method [DL PHARMACIST-2021]
- Molecular modelling
 - Topological Methods
 - Free energy Models
 - Shake-flask Method
2. The full form of QSAR is [MP PHARMACIST-2020 P-1]
- Quality Structure Action Result
 - Qualitative Structure-Activity Relationship
 - Quantitative Structure-Activity Relationship
 - Quality Structure Action Report

3. All of the following statements concerning chemical degradation are true EXCEPT [RJ PHARMACIST-2012 P-2]
- (a) As temperature increases, degradation decreases
 (b) Most drug degrades by a first order process
 (c) Chemical degradation may produce a toxic product
 (d) Chemical degradation may affect the therapeutic activity of a drug
4. An Isosteric replacement for carboxylic acid group is [AIIMS PHARMACIST-2018]
- (a) Pyrrole (b) Isoxazole (c) Phenol (d) Tetrazole
5. The prodrug which consists of two pharmacologically active agents coupled together so that each acts as a promoiety for the other agent and vice versa is called [GDC PRACTICE MCQ]
- (a) Mutual prodrug (b) Bio precursor prodrug
 (c) Carrier linked prodrug (d) Dry prodrug

Drugs Acting on Autonomic Nervous System

CHOLINERGIC DRUGS

1. Which of the following isomer is more potent as a muscarinic agonist [MP PHARMACIST-2017]
- (a) Trans isomer (b) Cis isomer (c) R isomer (d) S isomer
2. Which among the followings do not have an active metabolite [KERALA PHARMACIST-2018]
- (a) Morphine (b) Neostigmine (c) Diazepam (d) Digitoxin
3. Pilocarpine is an alkaloid containing [ESIC PHARMACIST- 2019]
- (a) Pyrazole (b) Oxazole (c) Imidazole (d) Pyrrole
4. _____ ions are responsible for release of ACh from neurons [HAMIRPUR PHARMACIST-2021]
- (a) Sodium (b) Calcium (c) Potassium (d) Magnesium

ANTICHOLINERGIC DRUGS

5. Atropine is the ester of [DHS MH PHARMACIST-2021]
- (a) Tropine and mandelic acid (b) Tropine and tropic acid
 (c) Tropic acid and salicylic acid (d) Tropine and salicylic acid
6. Atropine is [SECL PHARMACIST - 2013]
- (a) Levoform (b) Dextroform
 (c) Optically inactive (d) Mesoform
7. A synthetic anticholinergic drug which is an ester carrying xanthene heterocycle [KERALA PSC PHARMACIST-2021 P-1]
- (a) Homatropine (b) Benztropine (c) Propantheline (d) Biperiden
8. Which salt of hyoscine is most stable and popularly accepted [KERALE PSC PHARMACIST-2020]
- (a) Methonitrate (b) Butyl bromide (c) Hydrobromide (d) Methobromide

Pharmaceutical Titration

- Which of the following is used as an indicator in the Volhard method of titration [CG PHARMACIST-2015]
 - Phenol red
 - Starch mucilage
 - Ferric alum
 - Crystal violet
- The pH range of Indicator is 6.8-8.4 [DSSSB PHARMACIST-2021]
 - Bromocresol green
 - Methyl range
 - Phenol red
 - Methyl red
- In the assay of Hydrogen Peroxide the indicator used is [KERALA PSC PHARMACIST-2021 P-2]
 - Potassium Permanganate
 - Phenolphthalein
 - Thymol Blue
 - Methyl Orange
- Aprotic solvents have [RRB PHARMACIST-2016]
 - Acidic properties
 - Basic properties
 - Both acidic and basic properties
 - No acidic or basic properties
- Which one among the following is an example of aprotic solvent [DSSSB PHARMACIST-2019 P-1]
 - Toluene
 - Sulphuric acid
 - Acetic acid
 - Water
- Which of the following is an example of azo indicator [DSSSB PHARMACIST-2021]
 - Phenol red
 - Phenolphthalein
 - Methyl red
 - Ferriin
- Which of the following is NOT a titrimetric method [MP PHARMACIST-2020 P-1]
 - Fluorimetry
 - Precipitation
 - Complexometry
 - Acid-base
- Complexone III is otherwise known as [DSSSB PHARMACIST-2021]
 - Potassium permanganate
 - Capric iodide
 - Disodium edetate
 - Ferry ferrocyanide
- In gravimetric analysis for the determination of ash value, the acid insoluble portion of ash is determined by boiling with [DSSSB PHARMACIST-2021]
 - Sodium chloride
 - Dilute hydrochloric acid
 - Ammonium hydroxide
 - Acetic acid
- Calcium gluconate can be assayed by [KERALA PHARMACIST-2017, CGHS HYD PHARMACIST-2018, KERALA PSC PHARMACIST-2020, KERALA PSC PHARMACIST-2021 P-2]
 - Redox titration
 - Complexometric titration
 - Precipitation titration
 - Acid-base titration
- Which of the following is used for standardization in redox titration [DSSSB PHARMACIST-2021]
 - Calcium carbonate
 - Sulfanilic acid
 - Potassium Hydrogen phthalate
 - Ferrous sulphate
- Sodium fluoride is assayed by [HPSSB PHARMACIST-2020]
 - Diazotization titration
 - Complexometric titration
 - Acid-base titration
 - Non-aqueous titration



BIOCHEMISTRY AND CLINICAL PATHOLOGY

Carbohydrates

- What is the normal fasting blood sugar level range** [BSSC PHARMACIST-2019, KERALA PSC PHARMACIST-2021 P-2]
(a) 70-100 mg/dl (b) 70-140 mg/dl
(c) 100-125 mg/dl (d) 100-140 mg/dl
- Calorific value of carbohydrate is approximately equal to** [KERALA PHARMACIST-2019]
(a) 4 Kcal/g (b) 0.4 kcal/g (c) 0.04 Kcal/g (d) 9 Kcal/g
- Number of asymmetric carbon atoms in glucose is** [HPSSC PHARMACIST-2022]
(a) 1 (b) 2 (c) 3 (d) 4
- Which one of the following acts like a fuel in driving the body** [SIHFW PHARMACIST-2016]
(a) Water (b) Vitamin
(c) Fats (d) Carbohydrates
- What is the major function of carbohydrates** [MC-ND PHARMACIST-2022]
(a) Water circulation (b) Mineral transport
(c) Storage of energy (d) All of these
- The percentage of total calories obtained from carbohydrates should be between** [RRB DEPARTMENTAL PHARMACIST-2019, RRB PHARMACIST-2019 P-1, RRB PHARMACIST-2019 P-2]
(a) 10% to 20% (b) 50% to 60% (c) 20 to 30% (d) 5 to 10%
- A monosaccharide is** [HPSSC PHARMACIST-2022]
(a) Lactose (b) Sucrose (c) Ribose (d) Maltose
- Galactose is a** [HPSSC PHARMACIST-2018]
(a) Monosaccharide (b) Disaccharide (c) Polysaccharide (d) Sucrose
- D-fructose on simple reduction gives** [HPSSC PHARMACIST-2018]
(a) Only mannitol (b) Only sorbitol
(c) Mixture of mannitol and sorbitol (d) L-fructose
- The preferred substrate for hexokinase and repairing ability is** [CCF PHARMACIST-2014]
(a) Glucose
(b) Fructose
(c) Glucose and fructose are equally preferred
(d) None of these
- The sugar found in milk is** [RRB PHARMACIST-2015]
(a) Galactose (b) Glucose (c) Fructose (d) Sucrose

Proteins

- Which of the following is NOT an amino acid [BFUHSMC PHARMACIST-2022]
 - Alanine
 - Glycerine
 - Leucine
 - Serine
- The amino acids that cannot be synthesized in the body and must be supplied in the diet are known as [CGHS BANGALORE PHARMACIST-2019]
 - Alicyclic compounds
 - Aliphatic compounds
 - Essential Amino acids
 - Aromatic amino acids
- By which bond, amino acids are joined together [RRB PHARMACIST-2019 P-2]
 - Amide
 - Hydrogen
 - Ionic
 - Dipole-Dipole
- All are essential amino acid EXCEPT [OSSSC PHARMACIST-2021]
 - Leucine
 - Lysine
 - Phenylalanine
 - Tyrosine
- Which group of amino acid is CORRECT in relation to essential amino acids [DL PHARMACIST-2021]
 - Isoleucine, methionine, valine, lysine
 - Isoleucine, serine, valine, phenylalanine, lysine
 - Phenylalanine, alanine, valine, lysine
 - Alanine, arginine, leucine, glutamine
- Which of the following is NOT an essential amino acid [DSSSB PHARMACIST-2019 P-2]
 - Valine
 - Lysine
 - Leucine
 - Serine
- Which of the following is an essential amino acid [KERALA PHARMACIST-2019]
 - Alanine
 - Valine
 - Tyrosine
 - Proline
- The amino acid that is an important precursor of haemoglobin is [HPSSB PHARMACIST-2020]
 - Alanine
 - Glycine
 - Protein
 - Isoleucine
- Which of the following is a sulphur- containing amino acid [DSSSB PHARMACIST-2019 P-2]
 - Arginine
 - Cysteine
 - Proline
 - Asparagine
- Example of an aliphatic amino acid [KERALA PHARMACIST-2017]
 - Cysteine
 - Glycine
 - Phenylalanine
 - Arginine
- The cofactor of Glycogen phosphorylase is [JR SCIENTIFIC OCEL PHARMACIST-2015]
 - TPP
 - PLP
 - NADH
 - CoA
- A sulphur-containing amino acid is [RRB PHARMACIST- 2015, ESIC PHARMACIST-2019, DHS ASSAM PHARMACIST-2021]
 - Methionine
 - Ornithine
 - Glutamine
 - Asparagine
- Which among the following is an amide containing amino acid [DSSSB PHARMACIST- 2019]
 - Leucine
 - Serine
 - Asparagine
 - Cysteine
- The specific test for identifying imidazole ring in amino acids is [ESIC PHARMACIST- 2019]
 - Pauly's test
 - Biuret test
 - Millon's test
 - Folin's test



HEALTH EDUCATION AND COMMUNITY PHARMACY

Concept of Health and Environment & Health

- 1. What is AYUSH** [RRB PHARMACIST - 2019 P-1]
 - (a) Ayurveda, Yoga, Unani, Siddha and Homeopathy
 - (b) Ayurveda, Yoga, Unani, Siddha and Herbal
 - (c) Ayurveda, Unani, Siddha and Homeopathy
 - (d) Allopathy, Unani, Siddha and Homeopathy
- 2. Which of the following is NOT included in the dimension of holistic health** [MP PHARMACIST-2023 P-2]
 - (a) Mental
 - (b) Finance
 - (c) Physical
 - (d) Spiritual
- 3. Which concept specifically defines a bacterium as the cause of a disease** [MP PHARMACIST- 2023 P-1]
 - (a) Holistic concept
 - (b) Ecological concept
 - (c) Biomedical concept
 - (d) Psychosocial concept
- 4. Which concept describes the harmonious balance between the healthy body and the environment** [MP PHARMACIST- 2023 P-1]
 - (a) Biomedical concept
 - (b) Psychosocial concept
 - (c) Holistic concept
 - (d) Ecological concept
- 5. Physical health refers to** [MP PHARMACIST - 2020 P-1]
 - (a) Individual's constitutional health
 - (b) Mind of the individual
 - (c) Overall integrated development of society culture, economic, educational, social and political
 - (d) The spirit or soul
- 6. Physical health means** [MP PHARMACIST-2020 P-1]
 - (a) Good looking
 - (b) Neat and clean
 - (c) Sociable
 - (d) Normal functioning of body and organs
- 7. What is the full form of CNG, in controlling vehicular air pollution** [RRB PHARMACIST-2019 P-2]
 - (a) Combined Natural Gas
 - (b) Compressed Natural Gas
 - (c) Common Natural Gas
 - (d) Combined Nitrogen Gas
- 8. Any undesirable change in the physical, chemical or biological features of air, land and water is called** [RRB PHARMACIST-2019 P-2]
 - (a) Ecology
 - (b) Pollutants
 - (c) Pollution
 - (d) Ecosystem



DRUG STORE AND BUSINESS MANAGEMENT

Recruitment, Training, Evaluation & Compensation to a Pharmacist

1. A test is used to judge the mental capacity of an applicant [RJ PHARMACIST-2012 P-3]
(a) Personality test (b) Proficiency test (c) Aptitude test (d) Intelligence test
2. Reference check of the personnel is the process under [KERALA PSC PHARMACIST-2021 P-1]
(a) Compensation (b) Training (c) Evaluation (d) Recruitment
3. Conceptual skill deals with [RRB PHARMACIST-2019 P-1, RRB PHARMACIST-2019 P-2]
(a) Ideas (b) Process (c) People (d) Things
4. Which is the first in selection process [HP PHARMACIST-2016]
(a) Preliminary interview (b) Application blank
(c) Employment test (d) Scrutiny of applications
5. A test help to measure a candidates capacity to learn particular skills and his potential abilities [GDC PRACTICE MCQ]
(a) Personality test (b) Aptitude test (c) Trade test (d) Intelligence test

Sales Promotion

1. A middleman is the person who provides a link between the [UP NHM PHARMACIST-2023]
(a) Manufacturer and owner (b) Workers and owner
(c) Customer and owner (d) Manufacturer and customer
2. The price that equates market supply and market demand is called [ESIC PHARMACIST-2019]
(a) Market restoring price (b) Market depreciating price
(c) Market elastic price (d) Market clearing price
3. The art of planning, organizing, staffing, motivating and controlling is called [ESIC PHARMACIST-2019]
(a) Manufacturing (b) Advertising skills
(c) Management (d) Marketing
4. The channel involving retailers and given in wholesalers is [ESIC PHARMACIST-2019]
(a) The primary channel (b) The typical channel
(c) The secondary channel (d) The marketing channel
5. Which is the end party in the pharmaceutical marketing channel [DSSSB PHARMACIST-2019 P-2]
(a) Physician (b) Pharmacist (c) Consumer (d) Retailer



HOSPITAL AND CLINICAL PHARMACY

HOSPITAL PHARMACY

1. A hospital is called large if it has ___ beds [NWR RJ PHARMACIST-2012]
(a) > 500 (b) 400-1000 (c) 500-1000 (d) >1000
2. How many pharmacists are required for a 100 bed hospital [UP NHM PHARMACIST-2023, HPSSB PHARMACIST-2020]
(a) 10 (b) 06 (c) 05 (d) 02
3. The hospital pharmacy requires a minimum of ___ floor space according to the norms laid down by Drugs and Cosmetics Act, 1940 [NWR RJ PHARMACIST-2012]
(a) 100 Sq. ft. (b) 150 Sq. ft. (c) 250 Sq. ft. (d) 200 Sq. ft.
4. Choose the hospital classified based on the cost [HPSSB PHARMACIST-2020]
(a) Budget hospital (b) Small hospital
(c) Medium hospital (d) Large hospital
5. Which among the following is NOT a role of community pharmacist [MP NHM PHARMACIST-2022]
(a) Nutrition counselling (b) Individualization of drug therapy
(c) Rationale use of drugs (d) Drug promotion to physicians
6. Community pharmacies that are individually owned by local pharmacies are termed as [MP NHM PHARMACIST-2022]
(a) Food store pharmacies (b) Mass merchandiser pharmacies
(c) Chain pharmacies (d) Independent pharmacies
7. Which one of the following is NOT a salient feature of a Hospital Pharmacy [CGHS DL PHARMACIST-2018]
(a) Design of a new drug (b) Supply of Pharmaceutical Drugs
(c) Dispensing of Narcotic Products (d) Supply and storage of ancillary products
8. What is minimum space requirement for Manufacturing ASU drugs [RJ PHARMACIST-2014]
(a) 1200 sq. ft. (b) 1600 sq. ft. (c) 1800 sq. ft. (d) 1300 Sq. ft.
9. Ambulatory patients are [ESIC PHARMACIST-2014]
(a) Required to admit in the ward for treatment
(b) Required to go home after taking treatment in OPD
(c) Require emergency treatment
(d) None of these
10. Following are the role of modern community pharmacy EXCEPT [BPKMC HOSPITAL PHARMACIST-2014]
(a) Care of patients or clinical pharmacy
(b) Small scale manufacture of medicines
(c) Responding to minor ailments
(d) Health promotion

Compounding in Hospitals

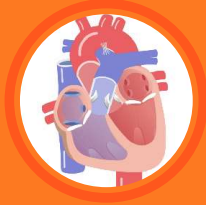
- Most essential medicines should be formulated as [MP NHM PHARMACIST-2022]
 - No compound
 - Single compound
 - Multiple compounds
 - Fixed dose combinations
- In how many days a pharmacist should dispense diluted aqueous mixtures [ISRO PHARMACIST-2018]
 - 7 days
 - 14 days
 - 21 days
 - 30 days
- Medications which must be prepared by following a specific recipe or formula, usually because they are not available commercially are called [GDC PRACTICE MCQ]
 - Compounds
 - Private compounds
 - Extemporaneous compounds
 - None of these
- A record of medications compounded in the pharmacy is called [GDC PRACTICE MCQ]
 - Bulk compounding log
 - Compounding log
 - Yule time log
 - None of these
- A form that tracks the medication administered to a patient is called [GDC PRACTICE MCQ]
 - Formulary
 - Medication administration record
 - Patient wrist band
 - Medication error record

CLINICAL PHARMACY

- The healthcare professionals responsible, for reporting ADR in a hospital is/are [CGHS BANGALORE PHARMACIST-2019]
 - Doctor
 - Nurses
 - Pharmacist
 - All of these
- While attending to patients during counselling sessions the desirable body language should be [MH PHARMACIST-2012]

[I] Facing the patient directly	[II] Leaning forward at a slight angle
[III] Nodding and hand gestures	[IV] Blank stares

 - I and II
 - Only I
 - I, II and III
 - I and IV
- Regulatory body responsible for monitoring of ADRs in India [CGHS BANGALORE PHARMACIST-2019]
 - Central Drugs Standard Control Organization
 - Indian Institute of Sciences
 - Pharmacy Council of India
 - Medical Council of India
- Patient counseling is done by [BRKM PHARMACIST - 2018]
 - Dispensing pharmacist
 - Pathologist
 - Clinical pharmacist
 - None of these



HUMAN ANATOMY AND PHYSIOLOGY

Terminologies

- 1. Angiology refers to** [HPSSC PHARMACIST-2020]
(a) Skeletal system (b) Articular system
(c) Integumentary system (d) Circulatory system
- 2. Meaning of anatomy is** [BCCL PHARMACIST-2013, 2015, NCL PHARMACIST-2016]
(a) Study of plants (b) Study of microbes
(c) Study of human body parts (d) None of these
- 3. The science of dealing with the studies of benign a malignant tumor is** [BCCL PHARMACIST-2013, 2015, NCL PHARMACIST-2016]
(a) Etiology (b) Tumorology (c) Hematology (d) Oncology
- 4. The branch of biology that deals with the study of fungi is called** [BCCL PHARMACIST-2013, 2015]
(a) Algology (b) Phycology (c) Mycology (d) Microbiology
- 5. Ophthalmology is the study of** [RRB PHARMACIST-2015]
(a) Eyes (b) Nose (c) Throat (d) None of these

Cell and Tissue

- 1. In 1665 who discovered the cell** [AIIMS PHARMACIST- 2012]
(a) Robert Hook (b) AG Lowey (c) Robert brown (d) Huxley
- 2. Nematocyst is a** [HAMIRPUR PHARMACIST-2021]
(a) Cell (b) Group of cells (c) Organ (d) Part of a cell
- 3. Cell wall consists of** [BCCL PHARMACIST-2013]
(a) Lignin, Hemi cellulose, Pectin and Lipid
(b) Lignin, Hemi cellulose, Pectin and cellulose
(c) Lignin Hemi cellulose, Protein and Lipid
(d) Hemi cellulose, Cellulose, Tubulin and lignin
- 4. Which of the following diffuses most rapidly across the cell membrane** [MP PHARMACIST-2017]
(a) CO₂ (b) Glucose (c) Urea (d) Amino acid
- 5. The powerhouse of the cell is** [RRB PHARMACIST - 2015, ESIC PHARMACIST-2016, HPSSC PHARMACIST-2020, MH PORE PHARMACIST-2021, VMC PHARMACIST-2021]
(a) Golgi bodies (b) Mitochondria (c) Ribosomes (d) Nucleus

Respiratory System

- Which of the following is excreted by the respiratory system
[BFUHS MC PHARMACIST-2022, UP NHM PHARMACIST 2023]
(a) Carbon dioxide (b) Faeces (c) Urea (d) Protein
- Atmospheric pressure is important in the process of [BRKM PHARMACIST - 2018]
(a) Breathing (b) Blood flow (c) Micturition (d) Reproduction
- The body part in which endo respiratory drugs are introduced through [MC-ND PHARMACIST-2022]
(a) Eye (b) Throat (c) Nose (d) Ear
- The supporting membrane that regulates the temperature and moisture of the air coming in and through the respiratory tract is [MC-ND PHARMACIST-2022]
(a) Nasal membrane (b) Mucous membrane
(c) Nasopharyngeal (d) Alveoli
- That part of the pharynx above the level of the soft palate is called [HPSSB PHARMACIST-2020]
(a) Nasopharynx (b) Oropharynx (c) Eustachian tube (d) Palato pharynx
- In human body "Thorax" is the portion related to [RRB PHARMACIST-2015]
(a) Thyroid gland (b) Chest (c) Knees (d) Throat
- Indicate muscles, which are more resistant to block and recover more rapidly [VMC PHARMACIST-2021]
(a) Hand (b) Leg (c) Neck (d) Diaphragm
- Which of the following is not a vestigial organ [RRB PHARMACIST - 2015]
(a) Centriole (b) Molar tooth (c) Appendix (d) Diaphragm
- Diaphragm is [RRB PHARMACIST-2015]
(a) Skeletal muscle (b) Smooth muscle (c) Bone cavity (d) Artery
- The length of Adult Trachea is [ESIC PHARMACIST - 2016]
(a) 6 to 8 cm (b) 10 to 11 cm (c) 14 to 15 cm (d) 16 to 20 cm
- Bronchi branch into the tubes of smaller diameters (less than 1 mm) known as [BCCL PHARMACIST-2013]
(a) Micro trachea (b) Bronchioles
(c) Alveoli (d) Eustachian tubes
- Among the following organs in which the perfusion rate is maximum [RRB PHARMACIST-2019 P-1]
(a) Lungs (b) Heart (c) Kidney (d) Liver
- Which of the following is the normal weight of the right lung in an adult [CGHS DL PHARMACIST-2018]
(a) 120 gm (b) 1175 gm (c) 1345 gm (d) 625 gm
- The hilum of the right lung is arched by [MP PHARMACIST-2020 P-1]
(a) Recurrent laryngeal nerve (b) Azygos vein
(c) Thoracic duct (d) Vagus nerve
- Alveoli is a functional unit of [MP PHARMACIST-2020 P-1]
(a) Heart (b) Kidney (c) Lungs (d) Liver

Sense Organs

- Lachrymal glands produce** [ESIC PHARMACIST-2016]
 (a) Tear (b) Wax (c) Sweat (d) Sebum
- Tears contain an antibacterial enzyme known as** [ISRO PHARMACIST-2017]
 (a) Zymase (b) Diastase (c) Lysozyme (d) Lipase
- Choose the correct pH of lachrymal fluid** [RJ PHARMACIST - 2012 P-2, HPSSC PHARMACIST-2018, ISRO PHARMACIST - 2018]
 (a) 5 (b) 6.2 (c) 9 (d) 7.4
- Light rays entering the eye is controlled by** [HPSSC PHARMACIST-2022]
 (a) Pupil (b) Iris (c) Cornea (d) Lens
- Vision condition in which only close objects can be seen clearly is** [MP PHARMACIST-2020 P-1]
 (a) Cataract (b) Glaucoma (c) Hyperopia (d) Myopia
- Rods and cones are part of** [CG PHARMACIST-2016, BSSC PHARMACIST-2019]
 (a) Inner ear (b) Liver (c) Breast (d) Eye
- The aperture of the human lenses is called** [CG PHARMACIST-2016, BSSC PHARMACIST-2019]
 (a) Iris (b) Cornea (c) Retina (d) Pupil
- What type of epithelium is present in the conjunctiva of the human eye** [DSSSB PHARMACIST-2019 P-1]
 (a) Stratified squamous non-keratinizing epithelium
 (b) Transitional epithelium
 (c) Keratinized transitional epithelium
 (d) Keratinized Stratified epithelium
- The ability of the eye lens to adjust its focal length is called** [RRB PHARMACIST-2019 P-1]
 (a) Magnification (b) Accommodation (c) Focal length (d) Modulation
- Thickness of cornea is** [SECL PHARMACIST - 2013]
 (a) 540 microns (b) 5 mm (c) 10 mm (d) 3 μ m
- Colour vision is by** [ESIC PHARMACIST - 2016]
 (a) Rods (b) Cones (c) Occipital cortex (d) Bipolar cells
- The resolving power of unaided human eye is** [JR SCIENTIFIC OCEL PHARMACIST-2015]
 (a) 100 μ m (b) 600 μ m (c) 20 μ m (d) 400 μ m
- Tissues such as cornea, conjunctiva, aqueous humor, iris, ciliary body and lens make up the** [BRKM PHARMACIST - 2018]
 (a) Anterior portion of eye (b) Posterior portion of eye
 (c) Both anterior and posterior (d) The middle eye
- Myopia is corrected by** [RJ PHARMACIST - 2011 2012]
 (a) Plane lens (b) Concave lens
 (c) Convex lens (d) Cylindrical lens
- Sebaceous glands are** [HPSSC PHARMACIST-2022]
 (a) Apocrine (b) Merocrine (c) Holocrine (d) None of these



MISCELLANEOUS

General Intelligence and Reasoning Ability

- An object looks like a rectangle when photographed from the top and a circle when photographed from the front. The object is a [RRB PHARMACIST- 2015 P-1]
(a) Sphere (b) Cube (c) Cuboid (d) Cylinder
- Kanchan speaks truth only in the morning and lies in the afternoon. Kishan speaks truth in the afternoon and lies in the morning. A says that B is Kanchan. What time is it and who is A [RRB PHARMACIST- 2015 P-1]
(a) Morning, Kishan (b) Morning, Kanchan
(c) Afternoon, Kishan (d) Afternoon, Kanchan or Kishan
- If Arun is Chetna's son, Chetna and Kavita are sisters, Jyoti is Kavita's mother and Parth is the son of Jyoti, then [RRB PHARMACIST- 2015 P-1]
(a) Parth and Arun are cousins (b) Parth is the uncle of Arun
(c) Kavita is Arun's grand mother (d) Parth is the uncle of Kavita
- How many letters of the English alphabet (capital) appear same when looked at in a mirror?
(a) 9 (b) 10 (c) 11 (d) 12
- If P is coded as '+', Q is coded as '*', R is coded as '-' and S is coded as '÷', then, what is the code for 26Q1R40S8P1R50 [DSSSB PHARMACIST - 2019]
(a) -28 (b) -30 (c) 26 (d) 28
- In the following question, select the related letter / word / number from the given alternatives. ABC : 321 :: EFG : ? [DSSSB PHARMACIST - 2019]
(a) 345 (b) 456 (c) 765 (d) 567
- Study the following information and answer the questions given
A, B, C, D, E, F and G are sitting around a circle facing the centre, not necessarily in this order. D is not second to the left of F but D is second to the right of A. C is third to the right of A and C is second to the left of G. B is not the immediate neighbour of G. Then, who is sitting to the immediate right of C [DSSSB PHARMACIST - 2019]
(a) D (b) G (c) B (d) E
- The statements below are followed by two conclusions labeled I and II. Assuming that the information in the statements is true, even if it appears to be at variance with generally established facts, decide which conclusion (s) logically and definitely follow (s) from the information given in the statements [DSSSB PHARMACIST - 2019]

Conclusions:

I. Neeraj is an organised person

II. Neeraj is an industrious person

- (a) Only conclusion I follows (b) Either conclusion I or II follows
 (c) Only conclusion II follows (d) Both conclusions I and II follow

44. Select the option that relates to the third term in the same way as the second term relates to the first term

Cock : Crow :: Jackal : _____ [CGHS HYD PHARMACIST - 2018]

- (a) Howl (b) Croak (c) Low (d) Hoot

45. Read the information given carefully and answer the question : [CGHS HYD PHARMACIST - 2018]

X + Y means X is the sister of Y

X - Y means X is the son of Y

X × Y means X is the mother of Y

X = Y means X is the father of Y

X ÷ Y means X is brother of Y

X = Y means X is daughter of Y

Which of the following alternative means 'F' is father of 'J'

- (a) $F \div G = H \times I - J$ (b) $J = I \times H = G \div F$ (c) $J + I - H \times G - F$ (d) $F + G - H \times I - J$

46. Pointing to meera, Vijay said, "she is the mother of my son's wife daughter" How is Vijay Related to meera [CGHS HYD PHARMACIST - 2018]

- (a) Brother (b) Father-in-law (c) Father (d) Brother-in-law

47. Select the term that is related to the third term in the same way as the second term is related to the first term.

BYCX : DWEV :: FUGT : ? [CGHS NGP PHARMACIST - 2018]

- (a) HISQ (b) GRHQ (c) HSIR (d) ITJS

48. A, B, C, D, E are five numbers such that A is greater than C, D is smaller than B, C is greater than B and A is smaller than E. Which of the given members is greatest of all [CGHS NGP PHARMACIST - 2018]

- (a) E (b) D (c) A (d) C

49. A playful monkey sees a ladder which has 10 steps. He climbs 3 steps up and two steps down successively, taking one second to climb up 3 steps and another second to come down 2 steps. After how many seconds will he reach the tenth step [RRB PHARMACIST- 2015 P-1]

- (a) 20 (b) 18 (c) 17 (d) 15

50. There are 7 coins on a table. There are two players A and B. A player can take one or two coins at a time. They take their turns alternately. The person who takes the last coin in the loser. If A starts first [RRB PHARMACIST- 2015 P-1]

- (a) A can always win by taking 2 coins is the first move
 (b) A can always win by taking 1 coin is the first move
 (c) B can always win if he/she plays right
 (d) None of these

92. Which word does not belong to others [GDC PRACTICE MCQ]

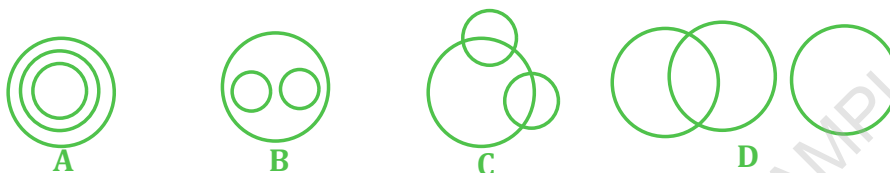
- (a) Rose (b) Lotus (c) Marigold (d) Petal

93. Arrange the following words in a meaningful sequence [GDC PRACTICE MCQ]

1. Cow 2. Grass 3. Milk 4. Curd 5. Butter

- (a) 1, 3, 2, 4, 5 (b) 4, 3, 5, 1, 2
(c) 3, 4, 5, 1, 2 (d) 1, 2, 3, 4, 5

94. Which of the following diagrams correctly shows the relationship between potato, food, and vegetables [GDC PRACTICE MCQ]



- (a) Figure A (b) Figure B (c) Figure C (d) Figure D

95. Select the diagram which correctly illustrates the relationship between a thief, criminal and judge [GDC PRACTICE MCQ]



- (a) Figure A (b) Figure B (c) Figure C (d) Figure D

96. If HOT is coded as GNS, How is COLD coded [GDC PRACTICE MCQ]

- (a) BNKC (b) DPME (c) EQNF (d) FROG

97. RQP, ONM, _ , IHG, FED, find the missing letters [GDC PRACTICE MCQ]

- (a) CDE (b) LKI (c) LKJ (d) BAC

98. What will be the day of the week 15th August, 2010 [GDC PRACTICE MCQ]

- (a) Sunday (b) Monday (c) Tuesday (d) Friday

99. Starting from a point, raju walked 12 ft North, he turned right and walked 10 ft, he again turned right and walked 12 ft, then the turned left and walked 5 ft. How far is he now and in which direction from the starting point [GDC PRACTICE MCQ]

- (a) 27 ft towards East (b) 5 ft towards East
(c) 10 ft towards West (d) 15 ft towards East

100. The following words SHRISHRI, SRISRI, SHRISRI, SRISHRI, SHREESHREE are arranged according to dictionary rule. Which of them will be in the end [GDC PRACTICE MCQ]

- (a) SRISHRI (b) SRISRI (c) SHRISRI (d) SHRISHRI

General Mathematics

- On dividing a number by 371, we get 52 as remainder. On dividing the same number by 53, what will be the remainder [RRB PHARMACIST-2019 P-1]
 (a) 52 (b) 51 (c) 50 (d) 49
- The number of terms between 11 and 100 which are divisible by 7 but not by 3 [DSSSB PHARMACIST-2015]
 (a) 08 (b) 09 (c) 27 (d) 28
- Find the compound interest if 2,000 is lent out at the rate of 10% per annum, compounded yearly for 3 years [RRB PHARMACIST- 2015 P-1]
 (a) 600 (b) 200 (c) 662 (d) 680
- Select the correct combination of mathematical signs to replace * sign and to balance the given equation: $5 * 5 * 5 * 3 * 10$ [DSSSB PHARMACIST - 2019]
 (a) $+ \div \times =$ (b) $+ \div = \times$ (c) $\times + = \times$ (d) $+ - \times =$
- If 36 men can dig a trench 200 meters long, 3 meters wide and 2 meters deep in 6 days working 10 hours a day, then in how many days working 8 hours a day will 10 men dig a trench of 100 meters long, 4m wide and 3m deep [DSSSB PHARMACIST - 2019]
 (a) 60 days (b) 20 days (c) 27 days (d) 15 days
- 23456022 is divisible by which of the following numbers [DSSSB PHARMACIST - 2019]
 (a) Both 4 and 8 (b) 3 (c) Only 8 (d) Only 4
- Find the average of the odd natural numbers between 22 to 38 [DSSSB PHARMACIST - 2019]
 (a) 31 (b) 29 (c) 30 (d) 32
- A man buys a single orange for Rs.22 If he were to buy a dozen oranges, he would have to pay a total amount of Rs.240. What would be the approximate percent discount he would get on buying a dozen oranges [DSSSB PHARMACIST - 2019]
 (a) 11.11 Percent (b) 9.66 Percent (c) 9.09 Percent (d) 10 Percent
- The sum of the present ages of A, B and C is 60 years. Six years ago, their ages were in the ratio 1 : 2 : 3 respectively. What is the present age of C [DSSSB PHARMACIST - 2019]
 (a) 27 years (b) 36 years (c) 40 years (d) 48 years
- X starts a business with Rs.21,000 and later Y joins him with Rs.36,000. After how many months did Y join, if the profit is distributed in equal ratio at the end of year [DSSSB PHARMACIST - 2019]
 (a) 5 (b) 7 (c) 9 (d) 6
- If A had worked alone, he would have taken 63 hours to do the task. What is B's share (in Rs), if A and B work together on a task finishing it in 36 hours and they get paid Rs 4900 for it [DSSSB PHARMACIST - 2019]
 (a) 3600 (b) 2100 (c) 3400 (d) 2750

General Science and General Knowledge

1. **World AIDS day is celebrated on** [BFUHSMC PHARMACIST-2022]
 (a) May 1 (b) December 1 (c) July 1 (d) April 1
2. **In India, the National Malaria Eradication Programme was launched in** [DSSSB PHARMACIST-2021]
 (a) 1958 (b) 1963 (c) 1972 (d) 1947
3. **There are two types of Visual Display Unit. Which statement describes about it in a true sense** [DL PHARMACIST-2021]
 (a) Cathode-Ray Tube Monitor takes only one illuminated pixel to form whole character, such as the letter 'e' in the word help
 (b) Flat Panel Display Monitor can be divided into a series of character boxes- fixed location on the screen where a standard character can be placed
 (c) The screen of Cathode-Ray Tube Monitor can be divided into a series of character boxes-fixed location on the screen where a standard character can be placed
 (d) The bigger the pixels of Cathode-Ray Tube Monitor, the better the image clarity or resolution
4. **An example of short-day plant is** [HAMIRPUR PHARMACIST-2021]
 (a) Maize (b) Radish
 (c) Chrysanthemum (d) Wheat
5. **Which agency handle global health issue** [SIHFW PHARMACIST-2016]
 (a) WHO (b) UNICEF (c) UNFPA (d) NIPI
6. **Select the CORRECT option for the organization of Health Delivery System in descending order** [DL PHARMACIST-2021]
 (a) DHS Public Health, DGHS, Joint Secretary, Minister of State for Health
 (b) Minister of State for Health, Secretary, Regional directors, Commissioner
 (c) Ministry of Health and family welfare, Secretary, Commissioner, Joint Secretary
 (d) Union Ministry of Health and Family Welfare, Regional directors, Deputy secretary, Public health
7. **Mark the CORRECT option for Lowenstein - Jensen and Loeffler's serum** [DL PHARMACIST-2021]
 (a) It is rendered sterile by heating at 45°C for half an hour on four successive days
 (b) It is rendered sterile by heating at 80-85°C for half an hour on three successive days
 (c) It is rendered sterile by heating at 60-75°C for half an hour on five successive days
 (d) It is rendered sterile by heating at 80-85°C for half an hour for 1 day
8. **Which of the following indicate main function of Yashoda** [SIHFW PHARMACIST-2016]
 (a) Provide quality services to mother and neonate hospitals
 (b) Provide health education to the new mother
 (c) Both (a) and (b)
 (d) None of these

130. The ratio of pure gold in 18 carat gold is [DSSSB PHARMACIST-2015]
 (a) 60% (b) 75% (c) 80% (d) 90%
131. Major harmful gas emitted by automobile vehicles which causes air pollution is [DSSSB PHARMACIST-2015]
 (a) Carbon monoxide (b) Methane
 (c) Carbon dioxide (d) Ozone gas
132. A man with colour blindness will see red as [DSSSB PHARMACIST-2015]
 (a) Yellow (b) Blue (c) Green (d) Violet
133. Which of the following is not a foreign bank working in India [DSSSB PHARMACIST-2015]
 (a) HSBC (b) Rabobank
 (c) Standard chartered (d) Yes Bank
134. Commercially, sodium bicarbonate is known as [DSSSB PHARMACIST-2015]
 (a) Washing soda (b) Baking soda
 (c) Bleaching powder (d) Soda ash
135. The headquarters of Asian Development Bank is located in [DSSSB PHARMACIST-2015]
 (a) Jakarta (b) Singapore (c) Bangkok (d) Manila
136. Mr. Manohar Lal Khattar was sworn in as the 10th Chief Minister of [DSSSB PHARMACIST-2015]
 (a) Maharashtra (b) Punjab
 (c) Haryana (d) Jammu and Kashmir
137. Man Booker Prize 2014 is won by _____ author Mr. Richard Flanagan [DSSSB PHARMACIST-2015]
 (a) Australian (b) British (c) Japanese (d) Indian
138. In the Miss World 2014 contest held in London on 14-12-2014. Rolene Strauss of the title "Miss World 2014" is from [DSSSB PHARMACIST-2015]
 (a) Italy (b) South Africa (c) U.S.A (d) Germany
139. The Vice President of India is elected by [DSSSB PHARMACIST-2015]
 (a) Members of Lok Sabha
 (b) Members of Rajya Sabha
 (c) Members of both Houses of Parliament
 (d) Member of all State Legislature
140. The names of the four sons of Mahatma Gandhi are Harilal, Manilal, Ramdas and [DSSSB PHARMACIST-2015]
 (a) Arun (b) Tushar (c) Rajmohan (d) Devdas
141. Expansion of PTI is [DSSSB PHARMACIST-2015]
 (a) Proper Trade Institution (b) Press Trust of India
 (c) People's Trade Industry (d) Personal Trust of India
142. Which one of the following planets has largest number of satellites or moons [DSSSB PHARMACIST-2015]
 (a) Jupiter (b) Mars (c) Saturn (d) Venus

General English

1. Choose the word which is opposite in meaning to the given word. **FATIGUED**
[DSSSB PHARMACIST - 2019]
(a) Energized (b) Deprived (c) Exhausted (d) Tired
2. Choose the word which is most similar in meaning to the given word **contentment**
[DSSSB PHARMACIST - 2019]
(a) Sufficiency (b) Satisfaction (c) Fullness (d) Hunger
3. Find the correct spelling from the following word [DSSSB PHARMACIST - 2019]
(a) Blashphemy (b) Blashpemy (c) Blasphamy (d) Blasphemy
4. Find the word which can be replaced for the given sentence **A country controlled by a small group or people** [DSSSB PHARMACIST - 2019]
(a) Oligarchy (b) Aristocracy (c) Plutocracy (d) Monarchy
5. Out of the given four words one is spelt incorrectly. Find the word that is incorrectly spelt [DSSSB PHARMACIST - 2019]
(a) Aggression (b) Existance (c) Beginning (d) Assassination
6. Out of the given options, choose the most appropriate one to fill in the blank
"She is sad that she _____ win the sack race" [DSSSB PHARMACIST - 2019]
(a) Cannot have (b) Could not (c) Could not have (d) Must have
7. In the given question, a part of the sentence is printed in bold. Choose the correct alternative. In addition to enhanced their reputations through strategic use of philanthropy, companies are sponsoring social initiatives to open new markets [DSSSB PHARMACIST - 2019]
(a) of enhancing their reputation (b) to having enhance their reputation
(c) to enhancing their reputation (d) to have their reputation enhancing
8. Out of the given four sentences, choose the one which is grammatically correct.
[DSSSB PHARMACIST - 2019]
(a) She has been listening to music from two hours
(b) She has been listening to music for two hours
(c) She have been listening to music for two hours
(d) She has been listening to music since two hours
9. A sentence with an underlined idiomatic expression is given. What is the meaning of the idiomatic expression 'at the crack of dawn' in the sentence given below It's a long drive, so we'll have to leave at the crack of dawn if we want to get there on time [DSSSB PHARMACIST - 2019]
(a) When sun is overhead
(b) Very early in the morning, when the sun rises
(c) Almost at midnight, when it's all dark
(d) Very late in the evening

79. Fill in the blank space with the appropriate word/ phrase. I thanked ____ her job offer, but told her I was sorry I could not leave Delhi to take it up [CGHS DL PHARMACIST - 2018]
 (a) With (b) From (c) To (d) For
80. Select the correct meaning of the underlined idiom/phrase. I wanted to give my daughter a surprise party on her 25th birthday but my son let the cat out of the bag [CGHS DL PHARMACIST - 2018]
 (a) Be excited about something (b) Be kind to someone
 (c) Reveal a secret (d) Be helpful to someone
81. Select the correct meaning of the underlined idiom/ phrase. It's a pity that she was crying over spilt milk because she had been forewarned to be careful about the matter. [CGHS DL PHARMACIST - 2018]
 (a) Mess up things due to bad planning and wrong action
 (b) Fail to meet expectations in spite of being told
 (c) To drop things and feel sorry for your mistake
 (d) To express regret about something that has happened in the past
82. Pick out the word that is INCORRECTLY spelt [CGHS DL PHARMACIST - 2018]
 (a) Anthropology (b) Philosophy (c) Sociology (d) Pshychology
83. Identify the synonym of the given word. INSCRIBE [CGHS DL PHARMACIST - 2018]
 (a) Improve (b) Inspire (c) Engrave (d) Instill
84. Identify the ANTONYM of the given word. TREACHEROUS [CGHS DL PHARMACIST - 2018]
 (a) Intentional (b) Trustworthy (c) Fickle (d) Powerless
85. One part of the following sentence has an error. Spot the part that has an error. Water resources are depleting fast/ and needs to be saved, otherwise the world will/face severe water shortage by 2025 [CGHS DL PHARMACIST - 2018]
 (a) Otherwise the world will face (b) Severe water shortage by 2025
 (c) Water resources are depleting fast (d) And needs to be saved
86. Choose the word that is correctly spelt. [CGHS DL PHARMACIST - 2018]
 (a) Atracity (b) Commitment (c) Grammer (d) Argument
87. Fill in the blank with an appropriate word. You have to wait ____ daylight to start searching for the missing climbers. [CGHS DL PHARMACIST - 2018]
 (a) Until (b) Since (c) Although (d) When
88. Complete the following sentence with an appropriate answer : I wish _____ [CGHS DL PHARMACIST - 2018]
 (a) He will come everyday (b) He would come everyday
 (c) He should come everyday (d) He comes everyday
89. Fill in the blank with an appropriate word. Every manager and every clerk is expected to ____ the interest of the bank [CGHS DL PHARMACIST - 2018]
 (a) Work (b) Obey (c) Defend (d) Protect
90. Fill in the blank with correct preposition. The labourers are clamouring _____ hike in their wages [CGHS DL PHARMACIST - 2018]
 (a) About (b) To (c) For (d) Against

113. Choose the correct sentence [GDC PRACTICE MCQ]

- (a) Father comes home at five O'clock. (b) Father comes to home at five O'clock
(c) Father comes at home at five O'clock (d) Father comes in home at five O'clock

114. Choose one word substitute for 'one who escapes from hard realities' [GDC PRACTICE MCQ]

- (a) Escapist (b) Rapist (c) Polyglot (d) Benefactor

115. Choose the word which is correctly spelt in British English [GDC PRACTICE MCQ]

- (a) Vilain (b) Vellain (c) Villain (d) Villian

116. Fill in the blank choosing the most appropriate alternative and complete the following sentence "We ___ them to arrive since last thursday" [GDC PRACTICE MCQ]

- (a) Have expected (b) Have been expecting
(c) Expect (d) Are expecting

117. Which of the following word is not its own singular [GDC PRACTICE MCQ]

- (a) Scissors (b) Spectacles (c) Tongs (d) Stereos

118. What is the Antonym for "culpable" [GDC PRACTICE MCQ]

- (a) Prone (b) Blameless (c) careless (d) Irresponsible

119. He sat ___ The table to have fag. (Fill in the blank with suitable preposition)

[GDC PRACTICE MCQ]

- (a) on (b) beside (c) at (d) by

120. "Laning" is the antonym for [GDC PRACTICE MCQ]

- (a) take away (b) take down (c) take off (d) take in

General Hindi

1. मुहावरा "शेर के कान कतरना" का अर्थ है [DSSSB PHARMACIST - 2019]

- (a) चकित रह जाना (b) बहुत चालाक होना
(c) बहादुरी का काम करना (d) अयोग्य होने पर भी किसी कार्य को करना

2. "पालन" का विलोम शब्द है [DSSSB PHARMACIST - 2019]

- (a) दुर्लभ (b) निपतन (c) अवनति (d) संहार

3. शुद्ध शब्द है [HP PHARMACIST-2016]

- (a) तषतिय (b) वित्रिय (c) त्रितष्य (d) तषतीय

4. "अर्धांगिनी" का पर्यायवाची है [HP PHARMACIST-2016]

- (a) आत्मना (a) धात्री (a) भार्या (a) मष्तना

5. सर्वमान्य नियम के विरुद्ध बात [HP PHARMACIST-2016]

- (a) अंधविश्वास (b) आडम्बर (c) अपवाद (d) विवाद

6. 'आटा गीला होना'— मुहावरे का अर्थ है [HP PHARMACIST-2016]

- (a) परेशान करना (b) संकट में पड़ना
(c) व्यर्थ कार्य (d) दुनियादारी का ज्ञान न होना



MODEL PAPER - 1

- National Energy Conservation Day is celebrated in India on**
(a) December 13 (b) December 14 (c) December 15 (d) December 12
- Who is the current Governor of Reserve Bank of India**
(a) C. Rangarajan (b) Shaktikanta Das
(c) Y. V. Reddy (d) Raghuram Rajan
- The CGS units of surface tension is**
(a) Dynes/cm (b) Dynes/sq cm (c) cc/cm (d) Both (a) and (b)
- Which one can be used for the determination of viscosity of non-newtonian fluid**
(a) Brookfield viscometer (b) Ostwald viscometer
(c) Creep viscometer (d) Anderson pipette
- Who among the following proposed Laws of planetary motion**
(a) Newton (b) Kepler (c) Ptolemy (d) Copernicus
- Which of the following organism breathes from skin**
(a) Snake (b) Earthworm (c) Monkey (d) Humans
- In India, the National Malaria Eradication Programme was launched in**
(a) 1958 (b) 1963 (c) 1972 (d) 1947
- Select the word that is spelt correctly**
(a) Exemplery (b) Conciously (c) Beutification (d) Gullible
- Which is the hottest planet of the Solar system**
(a) Mars (b) Earth (c) Venus (d) Mercury
- All statements are true for SN_1 reaction, EXCEPT**
(a) Follow first order kinetic
(b) Rearrangement is possible
(c) Inversion of configuration takes place
(d) Two step reaction
- Which north-east state/UT recently released the District Good Governance Index (DGGI)**
(a) Arunachal Pradesh (b) Assam
(c) Sikkim (d) Mizoram
- Which state/UT conferred the 'Green Champion Awards 2022'**
(a) Karnataka (b) Tamil Nadu (c) Assam (d) West Bengal
- Which of the following rivers do NOT originate in Madhya Pradesh**
(a) Chambal (b) Banas (c) Wainganga (d) Shipra
- Find the 21st term of the following series**
3, 9, 15,
(a) 123 (b) 129 (c) 117 (d) 135



MODEL PAPER - 2

- Ratio of oil : water : gum for preparing an emulsion using volatile oil**
(a) 2 : 2 : 1 (b) 4 : 2 : 1 (c) 3 : 2 : 1 (d) 1 : 1 : 2
- Glycerin or Sorbitol is added to gelatin in the preparation of soft gelatin capsules as**
(a) Preservatives (b) Plasticizer
(c) Polishing agent (d) Sweetening agent
- Which of the following is one of the parts of the hind brain**
(a) Hypothalamus (b) Cerebellum (c) Corpus callosum (d) Spinal cord
- Water attack test is used to identify the alkalinity in**
(a) Type-I glass (b) Type-II glass
(c) Type-III glass (d) Umber coloured glass
- Radioactivity is measured by**
(a) Ostwald detector (b) Stalagmometer
(c) Scintillation detector (d) Friabilator
- Which of the following is used for checking integrity of aseptic packaging material**
(a) Sterility test (b) Drop test
(c) Bursting test (d) Grammage test
- Which mill is depend on the principle of combined impact and attrition**
(a) Ball mill (b) Hammer mill
(c) Roller mill (d) Disintegrator mill
- Kidney function is tested as**
(a) Creatinine clearance rate (b) Trypan blue exclusion method
(c) Barium sulphate clearance rate (d) Probenecid exchange rate
- The inverse agonist of Benzodiazepine receptor is**
(a) Flurazepam (b) β -carbolines (c) Flumazenil (d) Lorazepam
- Which process is NOT applied for microencapsulation**
(a) Air suspension (b) Coacervation-phase separation
(c) Polymerization (d) Compression coating
- Hard gelatin capsules as received from manufacturer have moisture content**
(a) 10% (b) 12-15% (c) 20% (d) 18%
- Relative sweetness of sucrose, to saccharin is**
(a) 1 : 100 (b) 1 : 300 (c) 1 : 400 (d) 1 : 500
- In the process of extraction, Ethanol is used as a solvent for**
(a) Sucrose (b) Waxes (c) Alkaloids (d) Gums
- Goldbeater's skin test is used to detect the presence of ____ class of compounds**
(a) Tannins (b) Steroids (c) Glycerides (d) Resins

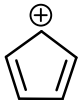
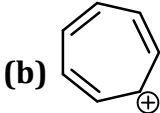
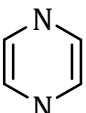
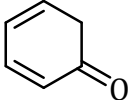


MODEL PAPER - 3

- Human insulin consists of 2 amino acid chains A and B**
 - 20 amino acids in A chain and 30 amino acids in B chain
 - 20 amino acids in A chain and 31 amino acids in B chain
 - 21 amino acids in A chain and 30 amino acids in B chain
 - 21 amino acids in A chain and 31 amino acids in B chain
- Source of γ - radiation used in ionizing sterilization is**
 - Uranium
 - Cobalt-60
 - Polonium
 - Lead
- How many nitrogen atoms are present in biguanide**
 - 3
 - 4
 - 5
 - 6
- BCG vaccine is**
 - Live attenuated viral vaccine
 - Live attenuated bacterial vaccine
 - Killed bacterial vaccine
 - Inactivated viral vaccine
- Which of the following is not a Macrolide antibiotic**
 - Erythromycin
 - Spiramycin
 - Azithromycin
 - Vancomycin
- To prevent INH induced neurotoxicity**
 - Pyridoxine
 - Cyanocobalamin
 - Niacin
 - Riboflavin
- Thromboxane is mainly synthesized by**
 - Lungs
 - Spleen
 - Platelets
 - Endothelium
- The term MDT (Multi Drug Therapy) is related to**
 - Leprosy
 - Giardiasis
 - Amoebiasis
 - None of these
- Endotoxin is produced by the following bacteria EXCEPT**
 - Salmonella typhi*
 - Bordetella pertussis*
 - Yersinia pestis*
 - Clostridium tetani*
- BAL is used against which metal poisoning**
 - Iodine
 - Arsenic
 - Mercury
 - Iron
- The Central Drugs Research Institute is situated at**
 - Kolkata
 - Kasauli
 - Izatnagar
 - Lucknow
- Standard for Cosmetics is included in**
 - Schedule P
 - Schedule T
 - Schedule S
 - Schedule F
- In the joint state pharmacy council, elected member among the registered pharmacist is**
 - 1
 - 3
 - 2
 - 5
- The thermoregulatory centre in the brain is located in**
 - The cerebellum
 - The medulla oblongata
 - The cerebrum
 - The hypothalamus



MODEL PAPER - 4

- Additive should have**
(a) No therapeutic value (b) Therapeutic value
(c) No immunogenic effect (d) Both (a) and (c)
- Indicate the local anesthetic agent which has a shorter duration of action**
(a) Lidocaine (b) Procaine (c) Bupivacaine (d) Ropivacaine
- Which of the following drug is both a muscarinic and nicotinic blocker**
(a) Atropine (b) Benztropine
(c) Hexamethonium (d) Succinylcholine
- Cod liver oil is nutritive due to presence of**
(a) Vitamin A (b) Vitamin A and D
(c) Vitamin A and B (d) Vitamin E
- The preferred drug for treating idiopathic diarrhea in NSAIDS patients is**
(a) Famotidine (b) Nizatidine
(c) Ranitidine (d) Zolantidine
- All are essential amino acid EXCEPT**
(a) Leucine (b) Lysine (c) Phenylalanine (d) Tyrosine
- Biotin structure is formed by fusion of**
(a) Imidazole and Thiophene rings (b) Imidazole and Furan rings
(c) Imidazole and Indoles rings (d) Imidazole and Purine rings
- Bases are substances when dissolved in aqueous solution gives**
(a) H⁺ ions (b) Na⁺ ions (c) Cl⁻ ions (d) OH⁻ ions
- Brunner's glands are found in**
(a) Mucosa of oesophagus (b) Mucosa of stomach
(c) Submucosa of duodenum (d) Mucosa of ileum
- Myristica fragrans* is the biological source of**
(a) Cinnamon (b) Ginger (c) Asafoetida (d) Nutmeg
- Which of the following is an aromatic compound**
(a)  (b)  (c)  (d) 
- According to their origin flax, jute and cotton is which type of fibre**
(a) Mineral (b) Animal or protein
(c) Vegetable or cellulose (d) Regenerated and synthetic
- Which is NOT a cardio selective β -blocker**
(a) Acebutolol (b) Atenolol (c) Pindolol (d) Metoprolol



MODEL PAPER - 5

- Which of the following is a delayed release system
 - Sugar coated tablet
 - Orally disintegrating tablet
 - Enteric coated tablet
 - All of these
- Which of the following gastric acid secretion inhibitor is NOT an anticholinergic
 - Pirenzepine
 - Propantheline
 - Magaldrate
 - Oxyphenonium
- Noyes Whitney equation is related to
 - Zero order kinetics
 - First order kinetics
 - Pharmacodynamics
 - Dissolution
- Which of the following schedules of the Drug and cosmetics rules refers to requirements for a pharmacy
 - Schedule M
 - Schedule N
 - Schedule O
 - Schedule P
- Silver sulfadiazine is used in management of burn because its high activity against
 - Staphylococcus
 - Pseudomonas
 - Mycobacterium
 - Corynebacterium
- For the manufacture of homeopathic medicines, the application to the licensing Authority is made in
 - Form 24A
 - Form 24B
 - Form 25C
 - Form 24C
- Action of which antibiotic may be inhibited concurrent use of Clindamycin
 - Penicillin
 - Erythromycin
 - Ciprofloxacin
 - All of these
- Greatest reabsorption of Na^+ take place in
 - Ascending loop of Henle
 - Proximal convoluted tubule
 - Distal tubule
 - Collecting ducts
- Calcitonin is a hormone release from
 - Adrenal cortex
 - Thyroid gland
 - Pituitary gland
 - Thymus gland
- Intolerance reaction with alcohol can occur in patient taking
 - Tetracycline
 - Cimetidine
 - Metronidazole
 - All of these
- Bronchodilation produced by Ipratropium bromide is due to its action as
 - Nicotinic agonist
 - Nicotinic antagonist
 - Muscarinic agonist
 - Muscarinic antagonist
- Patients taking a first generation H_1 Antihistaminic should be advised to avoid
 - Taking milk products
 - Driving motor vehicles
 - Hard physical exertion
 - All of these
- Convective mixing is also termed as
 - Diffusive mixing
 - Macro-mixing
 - Micro-mixing
 - Shear mixing

ABOUT THE BOOK

We are pleased to introduce the First edition of “**OBJECTIVE PHARMACIST EXAM AT YOUR FINGERTIPS**” for the students preparing for various type of Pharmacist Examination. This book consist of Topic and Subjectwise Separated most important MCQs which can play an important role in your easy exam preparation. We have made considerable effort to update each and every chapter’s questions and ensure the content is relevant to current practice.



only one dream

TO CRACK THE PHARMACIST

Lets Crack It



India's
**MOST DOWNLOADED
Pharma App**

Download India's Most Downloaded App to Get Free Study Material, Flash Card, e-Notes, Digesters, Online Test Series

Scan QR Code to download the APP



GPAT DISCUSSION CENTER

Head Office : A-17, Rajaswa Colony, Ashok Nagar,
New Sarkanda, Bilaspur (C.G.)

Phone : 9770765680, 8602227444

E-mail: gdcgpat037@gmail.com

Website : www.gdclive.com | www.gdconlinetest.in



ISBN : 978-81-962575-7-6



Price : ₹ 899.00