

RRB

फार्मासिस्ट के लिए

SURE SHOT

Question Series



RAILWAY PHARMACIST

As per the **RAILWAY
PHARMACIST** Syllabus

SOLVED PAPERS

6 Previous Year Papers

Subjectwise MCQs

➤ Pharma ➤ Non-Pharma

5 Model Papers

Get #GDCClasses App

- 1** 100% Updated for RRB
with Latest Syllabus of RRB
- 2** Extensive Practice
with 2800+ Questions
- 3** 100% Exam Readiness
with Subject wise + Previous year paper
+ Model paper



Get **FREE** Online Mock Test With This Book
(अंदर दिए गए निर्देशानुसार हमारी FREE Online Mock Test Join करें)

SURE SHOT
Question Series

RAILWAY PHARMACIST

As per the Railway Pharmacist Exam Syllabus

SOLVED PAPERS

9 Subjectwise Papers | 6 Previous Year Paper | 5 Model Papers

Dr. Peeyush Jaiswal

Director,
GPAT Discussion Center Pvt. Ltd.,
Bilaspur

Dr. Abhishek Tripathi

HOD,
GPAT Discussion Center Pvt. Ltd.,
Bilaspur

Dr. Pradeep Kumar Samal

Senior Assistant Professor,
Department of Pharmacy,
Guru Ghasidas Central University, Bilaspur

Ms. Bharti Vaishnaw

Research Scholar
Department of Pharmacy,
Guru Ghasidas Central University, Bilaspur



GDC PUBLICATION

GPAT Discussion Center Pvt. Ltd.

(ISO 9001-2015 Certified Institute)



GDC Publication.

A-17, Rajaswa Colony, Ashok Nagar,
Sarkanda, Bilaspur (C.G.),
Pin : 495006

A Text Book of Railway Pharmacist (Solved Paper)

As per the Railway Pharmacist Examination

ISBN : 978-81-973484-0-2

Copyright © 2024, By the GDC Publication.

All rights are reserved. No part of this publication may be reproduced, stored in or introduced into a retrieval system, or transmitted in any form or by any means (electronic, mechanical, photo-copying, recording or otherwise), without the prior written permission of the above mentioned publisher of this book.

GDC PUBLICATION has taken due care in collecting the data and providing the solutions, before publishing this book. In spite of this, if any inaccuracy or printing error occurs then GDC PUBLICATION owes no responsibility. GDC PUBLICATION will be grateful if you could point out any such error. Your suggestions will be appreciated.

Any government or private organization logo, posters, brand product name and image used in this book is only for educational purposes only.

Typesetting by :

Team GDC

Composition by :

Vidyadhar Sahu and Chandranayan Sahu

Published by :

GPAT Discussion Center Pvt. Ltd.
Bilaspur, 495001

Price : ₹ 500

Jurisdiction : All disputes with respect to this publication shall be subject to the jurisdiction of the Courts, Tribunals and Forums of Bilaspur Chhattisgarh, India only.

© All rights reserved by GDC PUBLICATION. No part of this book may be reproduced or utilized in any form without the written permission from the publisher.

for further Information about the products from GDC Publication

☎ +91-6263936320, +91-9770765680

🌐 www.gdconlinetest.in | www.gdc4gpat.com

✉ gdclive037@gmail.com

Railway Pharmacist

RRB VACANCY-2024

S.N.	Post	Pay Level in 7 th CPC	Initial pay (Rs.)	Medical Standard	Age/Years (as on 01.01.2025)	Total Vacancies (All RRBs)
1	Dietician (Level 7)	7	44900	C2	18-36	05
2	Nursing Superintendent	7	44900	C1	20-43	713
3	Audiologist & Speech Therapist	6	35400	B1	21-33	04
4	Clinical Psychologist	6	35400	B1	18-36	07
5	Dental Hygienist	6	35400	C2	18-36	03
6	Dialysis Technician	6	35400	B1	20-36	20
7	Health & Malaria Inspector Gr III	6	35400	C1	18-36	126
8	Laboratory Superintendent	6	35400	B1	18-36	27
9	Perfusionist	6	35400	B1	21-43	02
10	Physiotherapist Grade II	6	35400	C1	18-36	20
11	Occupational Therapist	6	35400	C1	18-36	02
12	Cath Laboratory Technician	6	35400	B1	18-36	02
13	Pharmacist (Entry Grade)	5	29200	C2	20-38	246
14	Radiographer X-Ray Technician	5	29200	B1	19-36	64

EXAM PATTERN

SUBJECT	NUMBER OF QUESTIONS	MARKS ALLOTTED
Professionalability	70	70
General Awareness	10	10
General Arithmetic, General Intelligence and Reasoning	10	10
General science	10	10
Total	100	100



There shall be negative marking in CBT (Computer Based Test/Examination) and marks shall be deducted for each wrong answer @ 1/3 of marks allotted for each question.

100 MCQs, 90 Minutes
(70-Pharma), (30-Non.Pharm)
Negative mark (-1/3)

Official Syllabus

PHARMACY SYLLABUS

<ul style="list-style-type: none">➤ Human Anatomy and Physiology➤ Pharmaceutical Analysis➤ Pharmaceutics➤ Pharmaceutical Inorganic Chemistry➤ Remedial Biology/ Mathematics➤ Pharmaceutical Organic Chemistry➤ Biochemistry➤ Pathophysiology➤ Computer Applications in Pharmacy➤ Environmental sciences➤ Physical Pharmaceutics➤ Pharmaceutical Microbiology➤ Pharmaceutical Engineering➤ Medicinal Chemistry➤ Pharmacology➤ Pharmacognosy and Phytochemistry➤ Industrial Pharmacy➤ Pharmaceutical Jurisprudence➤ Herbal Drug Technology	<ul style="list-style-type: none">➤ Biopharmaceutics & Pharmacokinetics➤ Pharmaceutical Biotechnology➤ Quality Assurance➤ Instrumental Methods of Analysis➤ Pharmacy Practice➤ Novel Drug Delivery System➤ Biostatistics & Research Methodology➤ Social and Preventive Pharmacy➤ Pharma Marketing Management➤ Pharmaceutical Regulatory Science➤ Pharmacovigilance➤ Quality Control & Standardization of Herbals➤ Computer Aided Drug Design➤ Cell and Molecular Biology➤ Cosmetic Science➤ Experimental Pharmacology➤ Advanced Instrumentation Techniques➤ Dietary Supplements & Nutraceuticals
--	---

NON-PHARMA SYLLABUS

SUBJECT	SYLLABUS
General Arithmetic's	Number systems, BODMAS, Decimals, Fractions, LCM and HCF, Ratio and Proportion, Percentages, Mensuration, Time and Work, Time and Distance, Simple and Compound Interest, Profit and Loss, Algebra, Geometry, Trigonometry, Elementary Statistics, Square Root, Age Calculations, Calendar & Clock, Pipes & Cistern
General Intelligence and Reasoning	Analogies, Alphabetical and Number Series, Coding and Decoding, General Intelligence and Reasoning Mathematical operations, Relationships, Syllogism, Jumbling, Venn Diagram, Data Interpretation and Sufficiency, Conclusions and Decision Making, Similarities and Differences, Analytical reasoning, Classification, Directions, Statement - Arguments and Assumptions etc.
General Awareness	Knowledge of Current affairs, Indian geography, culture and history of India including freedom struggle, Indian Polity and constitution, Indian Economy, Environmental issues concerning India and the World, Sports, General scientific and technological developments etc.
General Science	Physics, Chemistry and Life Sciences (up to 10th Standard CBSE syllabus).

Index

PHARMA SUBJECT WISE MCQs

PHARMACEUTICS AND ALLIED SUBJECTS	1-49
1. Industrial pharmacy, NDDS	
2. Physical pharmaceuticals	
3. Pharmaceutical engineering	
4. Biopharmaceutics and pharmacokinetics	
5. Cosmetic science	
6. Pharmaceutical microbiology	
7. Pharmaceutical biotechnology	
8. Pharma marketing management	
9. Pharmacy practice	
10. Pharmaceutical jurisprudence, Quality assurance, Pharmaceutical regulatory science	
PHARMACOLOGY AND ALLIED SUBJECTS	50-86
1. Pharmacology & Toxicology	
2. Human Anatomy and Physiology	
3. Pathophysiology	
4. Pharmacovigilance	
5. Cell and Molecular Biology	
6. Experimental Pharmacology	
PHARMACEUTICAL CHEMISTRY AND ALLIED SUBJECTS	87-120
1. Pharmaceutical Organic Chemistry	
2. Pharmaceutical Inorganic Chemistry	
3. Medicinal Chemistry, Computer Aided Drug Design	
4. Pharmaceutical Analysis Instrumental Methods of Analysis, Advanced Instrumentation Techniques	
5. Biochemistry	
PHARMACOGNOSY	121-137
1. Pharmacognosy and Phytochemistry, Dietary Supplements and Nutraceuticals, Herbal Drug Technology, Quality Control and Standardization of Herbals	
MISCELLANEOUS TOPICS	138-144
1. Remedial Biology/Remedial Mathematics	
2. Computer Applications in Pharmacy	
3. Biostatistics and Research Methodology	
4. Social and Preventive Pharmacy	
5. Environmental sciences	

NON-PHARMA MCQs

GENERAL ARITHMETIC'S..... 145-151

1. Number systems, BODMAS, Decimals, Fractions, LCM and HCF, Ratio and Proportion, Percentages, Mensuration, Time and Work, Time and Distance, Simple and Compound Interest, Profit and Loss, Algebra, Geometry, Trigonometry, Elementary Statistics, Square Root, Age Calculations, Calendar & Clock, Pipes & Cistern.

GENERAL INTELLIGENCE AND REASONING..... 152-161

1. Analogies, Alphabetical and Number Series, Coding and Decoding, Mathematical operations, Relationships, Syllogism, Jumbling, Venn Diagram, Data Interpretation and Sufficiency, Conclusions and Decision Making, Similarities and Differences, Analytical reasoning, Classification, Directions, Statement - Arguments and Assumptions etc.

GENERAL AWARENESS..... 161-168

1. Knowledge of Current affairs, Indian geography, culture and history of India including freedom struggle, Indian Polity and constitution, Indian Economy, Environmental issues concerning India and the World, Sports, General scientific and technological developments etc.

GENERAL SCIENCE..... 168-174

1. Physics, Chemistry and Life Sciences (up to 10th Standard CBSE syllabus).

RAILWAY PREVIOUS YEAR PAPERS

RAILWAY PHARMACIST - 19 th JULY 2019.....	175-180
RAILWAY PHARMACIST - 21 st JULY 2019.....	181-186
RAILWAY PHARMACIST - 2016.....	187-192
RAILWAY PHARMACIST - 8 th FEBRUARY 2015.....	193-199
RAILWAY PHARMACIST - 3 rd SEPTEMBER 2015.....	200-206
RAILWAY PHARMACIST - 2012.....	207-212

MODEL PAPERS

MODEL PAPER - 1.....	213-218
MODEL PAPER - 2.....	219-225
MODEL PAPER - 3.....	226-231
MODEL PAPER - 4.....	232-238
MODEL PAPER - 5.....	239-244



PHARMACEUTICS AND ALLIED SUBJECTS

Always a Step Ahead!

SCAN ME



To Join FREE
Online Test

INDUSTRIAL PHARMACY, NDDS

- Objectives of Preformulation studies is**
 - To develop the efficacious dosage form with maximum bioavailability
 - To determine its kinetics and stability
 - To determine most stable polymorph
 - All of these
- Which crystal habit is described as having a “regular or irregular thread-like” appearance**
 - Acicular
 - Angular
 - Bladed
 - Fibrous
- Which thermal method is used to measure changes in a sample’s mass as a function of temperature**
 - DSC
 - DTA
 - TGA
 - Thermo mechanical analysis
- Which of the following molecular properties can be determined by Thermogravimetric Analysis**
 - Solubility
 - Hygroscopicity
 - Colour stability
 - Hydrolysis
- Which of the following is kinetic properties of solid state physiochemical properties of the drug include**
 - Dissolution rate
 - Rate of solid state reaction
 - Stability
 - All of these
- The polymorphs exhibit the following different properties EXCEPT**
 - X-ray crystal and diffraction patterns
 - Melting points
 - Solubilities
 - Chemical structures
- An angle of repose between 31-35 degrees indicates what quality of powder flow**
 - Excellent
 - Good
 - Fair
 - Poor
- What classification is given to a substance that absorbs enough water to dissolve and form a solution**
 - Slightly hygroscopic
 - Hygroscopic
 - Very hygroscopic
 - Deliquescent
- Which of the following is a Analytical methods for monitoring the moisture level**
 - Gravimetry
 - Karl Fischer titration
 - Gas chromatography
 - All of these
- Which term describes a substance that requires between 100 and 1000 parts of solvent per gram of solute to dissolve**
 - Slightly soluble
 - Very slightly soluble
 - Sparingly soluble
 - Soluble
- In which method is the partition coefficient calculated based on the distribution of a drug between a stationary phase and a mobile phase**
 - Shake flask method
 - Chromatographic method
 - Counter current method
 - Filter probe method

189. Ocusert is a sustained delivery system of

- (a) Latanoprost (b) Phenylephrine
(c) Pilocarpine (d) Tropicamide

190. Type III glass is also known as

- (a) Soda-lime glass
(b) General purpose soda-lime glass
(c) Borosilicate glass
(d) Treated Soda Lime glass

191. Which type of glass is NOT suitable for parenteral preparations

- (a) Type I Borosilicate
(b) Type II Borosilicate
(c) Type IV Borosilicate
(d) All of these

192. Plastic containers are sterilized using

- (a) Hot air oven (b) Bleach
(c) Ethylene oxide (d) All of these

193. Rubber closures are washed with hot solution of

- (a) 0.3% of sodium pyrophosphate in water
(b) 0.2% of sodium pyrophosphate in water
(c) 0.1% of sodium pyrophosphate in water
(d) 0.5% of sodium pyrophosphate in water

194. Warm temperature storage condition explained in IP and USP ranges from

- (a) 25°C to 40°C (b) 25°C to 35°C
(c) 30°C to 40°C (d) 35°C to 45°C

195. Ideal temperature to store insulin is

- (a) 0°C-2°C (b) 0°C
(c) 2°C-8°C (d) 20°C-40°C

196. A lipid bilayer structure that encloses an internal aqueous volume

- (a) Niosome
(b) Liposome
(c) Solid lipid nanoparticle
(d) Nanoparticle

197. Liposomes are

- (a) Uni or multilayered vesicles of phospholipids
(b) Type of enzymes

(c) Fibrinopeptides

(d) Red blood cells

198. "Shealth Liposomes" have been developed to

- (a) Extend their half life
(b) Decrease the drug's toxicity
(c) Enable site specific drug delivery
(d) Alter the size of vesicles

199. Micro calorimetry technique is used to determine _____ in liposome

- (a) Phase transition temperature
(b) Inversion temperature
(c) Drying temperature
(d) Entrapment efficiency

200. An example of a polymer incorporated into dendrimers is

- (a) Propylene glycol
(b) Polyethyleneimine
(c) Polyurethane
(d) Styrene copolymers

PHYSICAL PHARMACEUTICS**1. The change in state from solid to gaseous is called as**

- (a) Sublimation (b) Evaporation
(c) Boiling (d) Melting

2. The general ideal gas law is expressed as

- (a) $PV = nRT$ (b) $P = 1/V$
(c) $V = Kt$ (d) $PV = k$

3. $P_1V_1 = P_2V_2$ equation is expressed by which law

- (a) Gay-Lussac's law (b) Boyle's law
(c) Charles's law (d) Avogadro's law

4. The equation $\log \frac{P_2}{P_1} = \frac{\Delta H_v(T_2 - T_1)}{2.303RT_1T_2}$ is known as

- (a) Clausius equation
(b) Clapeyron equation
(c) Clausius-Clapeyron equation
(d) Boltzmann-Planck equation

68. In terms of the kinetics degradation in suspension is

- (a) First order (b) Second order
(c) Pseudo zero order (d) Zero order

69. Efficiency of a reversible engine is given by

- (a) Clapeyron equation
(b) Clausius Clapeyron equation
(c) Gibbs-Helmholtz equation
(d) Carnot theorem

70. What type of kinetics do suspensions typically exhibit

- (a) First-order kinetics
(b) Zero-order kinetics
(c) Second-order kinetics
(d) Variable-order kinetics

PHARMACEUTICAL ENGINEERING

1. Which of the following is also called slant manometer

- (a) Inclined manometer
(b) Inverted U tube differential manometer
(c) Simple manometer
(d) Tube differential manometer

2. A manometer works on the principle of

- (a) Hydrostatic equilibrium
(b) Kinetic energy
(c) Reynolds number
(d) Bernoulli's equation

3. If the Reynolds number is less than 2000, the flow in pipe is

- (a) Turbulent (b) Laminar
(c) Transition (d) Non-uniform

4. When the flow is whether viscous or turbulent, which equation is used to calculate friction loss

- (a) Fanning equation
(b) Bernoulli's equation
(c) Stokes law equation
(d) Hagen Poiseuille equation

5. Pitot tube also is known as

- (a) Insertion tube (b) Venturi tube

(c) Connective tube (d) Conveyer

6. Heat transmission which limits to solids and fluids and bound in some ways is

- (a) Convection
(b) Radiation
(c) Conduction
(d) Momentary transition

7. The general equation for heat transfer rate, 'q', is expressed as

- (a) $q = UA / \Delta T$ (b) $q = A \Delta T / U$
(c) $q = U / A \Delta T$ (d) $q = UA \Delta T$

8. According to Stefan-Boltzmann law, ideal radiators emit radiant energy at a rate proportional to

- (a) Absolute temperature
(b) Square of temperature
(c) Fourth power of absolute temperature
(d) Cube power of absolute temperature

9. The output of size reduction of material in a machine depends on

- (a) Chemical nature
(b) Physical characteristics
(c) Bulk density
(d) All of these

10. Match the following

[A]

1. Roller mill
2. Hammer mill
3. Ball mill
4. Edge runner mill

[B]

[P] Attrition & impact

[Q] Crushing & shearing

[R] Compression

[S] Impact

Choose the correct answer

- (a) 1-[Q], 2-[R], 3-[S], 4-[P]
(b) 1-[R], 2-[S], 3-[P], 4-[Q]
(c) 1-[S], 2-[R], 3-[Q], 4-[P]
(d) 1-[S], 2-[Q], 3-[P], 4-[R]

41. **Edge filter is also called as**
 (a) Plate and Frame (b) Ring Filter
 (c) Meta Filter (d) Edge Runner Filter
42. **Filter having pore size _____ microns are used to remove virus particles from water or air**
 (a) 0.010 to 0.10 (b) 0.30 to 0.65
 (c) 0.65 to 0.95 (d) 1.0 to 1.5
43. **Non-Perforated Basket Centrifuge work on which principle**
 (a) Sedimentation (b) Filtration
 (c) Pressure (d) None of these
44. **Sequence of crystal growth is**
 (a) Cluster, Embryo, Nucleus, Crystal
 (b) Cluster, Nucleus, Embryo, Crystal
 (c) Nucleus, Embryo, Crystal, Cluster
 (d) Nucleus, Crystal, Embryo, Cluster
45. **Protamine zinc insulin is a ____ product**
 (a) Amorphous (b) Crystalline
 (c) Polymorphic (d) Tablet
46. **The birth of very small bodies of a new phase within a homogeneous super saturation liquid phase is**
 (a) Crystallization (b) Precipitation
 (c) Nucleation (d) Sublimation
47. **Theory for crystallization is**
 (a) Picks Theory
 (b) Meir's Theory
 (c) Theory of Saturation
 (d) Rettinger's Theory
48. **Meir's Theory is applicable when solute and solvent is used**
 (a) Pure (b) Insoluble
 (c) Unstable (d) Stable
49. **Kilograms of water vapour carried by one kg of dry air under a given set of conditions is called**
 (a) Dew point (b) Humid volume
 (c) Humidity (d) Saturated air
50. **A device to measure humidity is called a**

- (a) Hygrometer (b) Hydrometer
 (c) Flow meter (d) None of these

BIOPHARMACEUTICS AND PHARMACOKINETICS

1. **Bioavailability is defined as**
 (a) The rate at which a drug is metabolized
 (b) The rate and extent (amount) of drug absorption
 (c) The ability of a drug to reach the target tissue
 (d) The percentage of a drug that is excreted unchanged
2. **Which term describes the movement of a drug between different compartments, such as from blood to extravascular tissue**
 (a) Absorption (b) Biotransformation
 (c) Distribution (d) Elimination
3. **Water soluble drugs of MW < 100 follows**
 (a) Passive diffusion (b) Endocytosis
 (c) Ion- pair transport (d) Pore transport
4. **The applicability of Noyes-Whitney equation is to describe**
 (a) First order kinetics
 (b) Zero order kinetics
 (c) Mixed order kinetics
 (d) Dissolution rate
5. **Passive diffusion follows**
 (a) First order kinetics
 (b) Second order kinetics
 (c) Zero order kinetics
 (d) All of these
6. **Which is the other name of "cell eating"**
 (a) Transcytosis (b) Phagocytosis
 (c) Pinocytosis (d) Endocytosis
7. **BCS Class I drug are examples of**
 (a) Diltiazem, Metoprolol, Propranolol
 (b) Nifedipine, Ketoprofen, Carbamazepine
 (c) Insulin, Ranitidine, Atenolol
 (d) Taxol, Ranitidine, Atenolol

49. Which of the following are important parameters for bioavailability measurement in plasma level time studies, EXCEPT
- (a) t_{\max} (b) V_d
(c) AUC (d) C_{\max}
50. The systems that follows, Higuchi's Model used to describe drug release kinetics are
- (a) Swellable polymeric devices
(b) Diffusion matrix formulation
(c) Erodible matrix formulation
(d) Transdermal system
- COSMETIC SCIENCE**
1. The healing agent used in hand creams is
- (a) Soft paraffin (b) Urea
(c) Bees wax (d) Stearyl alcohol
2. Titanium dioxide is commonly present in
- (a) Vanishing cream
(b) Sunscreen cream
(c) Aqueous calamine cream
(d) Ophthalmic cream
3. Vanishing cream is an ointment that may be classified as
- (a) Water soluble base
(b) Oleaginous base
(c) Absorption base
(d) Emulsion base
4. The spreadability of cold cream is increased by adding
- (a) Hard paraffin
(b) Ozokerite
(c) Vegetable oil
(d) Isopropyl myristate
5. Example for O/W type of emulsion
- (a) Vanishing cream (b) Foundation cream
(c) Cleansing cream (d) Both (a) and (b)
6. Stearic acid is used in vanishing cream as
- (a) To maintain stiffness
(b) To increase consistency
(c) To increase white shinning
(d) All of these
7. Mostly used vegetable oil in lipstick is
- (a) Peanut oil (b) Almond oil
(c) Liquid paraffin (d) Castor oil
8. What is the colour of stain produced by tetrabromofluorescein in lipstick
- (a) Orange (b) Reddish blue
(c) Bluish red (d) Green
9. Adhesion of lipstick to lips is improved by
- (a) Castor oil (b) Petroleum jelly
(c) Bromo acids (d) Lecithins
10. The cold cream is
- (a) O/W emulsion (b) W/O emulsion
(c) Both (a) and (b) (d) None of these
11. Stearate cream is also known as
- (a) Vanishing cream (b) Cold cream
(c) Nail polish (d) Lipstick
12. Lauryl amino propionic acid in shampoo is used as
- (a) Clarifier (b) Conditioner
(c) pH adjustment (d) Detergent
13. Which of the following is an example of an abrasive used in dentifrices
- (a) Titanium dioxide
(b) Sodium lauryl sulfate
(c) Calcium carbonate
(d) Glycerin
14. Besides EDTA, what is another commonly used sequestrant
- (a) Sodium chloride
(b) Citric acid
(c) Potassium hydroxide
(d) Zinc oxide
15. Which compound is commonly used as a pearlescent agent in shampoo preparation
- (a) EDTA (b) Dodecyl ammonium
(c) Zinc undecylenate (d) Resorcinol
16. Which surfactant type includes compounds like N-alkyl β -iminodipropionate
- (a) Cationic (b) Anionic
(c) Amphoteric (d) Nonionic

- 17. What are the primary functions of zinc pyrithione (ZPTO) in shampoos**
- (a) Moisturizing hair
 - (b) Removing dandruff
 - (c) Coloring hair
 - (d) Strengthening hair roots
- 18. Thioglycolic acid-like compounds have applications in following type of cosmetic formulations**
- (a) Depilatory preparations
 - (b) Epilatory preparations
 - (c) Vanishing creams
 - (d) Skin tan preparations
- 19. A sulphur compound which is a common ingredient in shampoos and lotions for the treatment of dandruff and seborrheic dermatitis**
- (a) Selenium sulphide
 - (b) Sodium bisulphite
 - (c) Sodium metabisulphite
 - (d) Strontium sulphide
- 20. Which compound is used as a sunscreen in some shampoo formulations**
- (a) Ethanol
 - (b) P-hydroxy benzoic acid ester
 - (c) Benzophenone
 - (d) Formaldehyde
- 21. Which of the following is an example of temporary hair dye**
- (a) Crystal violet
 - (b) Black
 - (c) Crystal blue
 - (d) All of these
- 22. Which agents are used as clarifying agents in shampoo formulations**
- (a) Tragacanth
 - (b) Ethanol
 - (c) Citric acid
 - (d) Polyvinyl acetate
- 23. In nail polish, following polymer is used as a film-former**
- (a) Nitrocellulose
 - (b) Polylactic acid
 - (c) Hydroxypropyl methylcellulose
 - (d) Cellulose acetate phthalate
- 24. Which ingredient is commonly added to nail polish for iridescence**
- (a) Titanium dioxide
 - (b) Guanine
 - (c) Fish scale
 - (d) Bismuth oxychloride
- 25. Trisodium phosphate in nail preparation is used as**
- (a) Cuticle remover
 - (b) Cuticle softener
 - (c) Nail bleach
 - (d) Nail enamel
- 26. Which of the following is NOT an example of preservatives**
- (a) Borax
 - (b) Methyl paraben
 - (c) Propyl paraben
 - (d) Triethanolamine
- 27. Carbamide solution used for bleaching degrades into**
- (a) 0.5% sodium perborate
 - (b) 30% hydrogen peroxide
 - (c) 3% hydrogen peroxide
 - (d) 30% sodium perborate
- 28. Example of desensitizing agent is**
- (a) Zinc oxide
 - (b) Strontium chloride
 - (c) Sodium fluoride
 - (d) Calcium carbonate
- 29. Humectants added in cosmetic preparations generally act by**
- (a) Hydrogen bond formation
 - (b) Covalent bond formation
 - (c) Complex formation
 - (d) Action of London forces
- 30. What is the primary purpose of dentifrices**
- (a) Moisturize gums
 - (b) Clean teeth surfaces
 - (c) Whiten teeth
 - (d) Strengthen enamel

PHARMACEUTICAL MICROBIOLOGY

- 1. Father of microbiology is**
- (a) Louis Pasteur
 - (b) Lister
 - (c) A.V. Leeuwenhoek
 - (d) Robert Koch

- 36. Colistin, a polypeptide antibiotic, is assayed by using**
- Klebsiella pneumoniae*
 - Bordetella bronchiseptica*
 - Streptococcus faecium*
 - Pseudomonas aeruginosa*
- 37. Test organism used in microbial assay of "Bleomycin" is**
- Mycobacterium smegmatis*
 - Pseudomonas aeruginosa*
 - Staphylococcus aureus*
 - Escherichia coli*
- 38. Which microorganism is used to assay Vitamin B₁₂**
- Lactobacillus casei*
 - Lactobacillus leichamannii*
 - Lactobacillus viridescens*
 - Lactobacillus plantarum*
- 39. Which microorganism is used for the microbiological assay of Amikacin**
- Staphylococcus aureus*
 - Bacillus subtilis*
 - Saccharomyces cerevisiae*
 - Micrococcus luteus*
- 40. What microorganism is responsible for the production of Amphotericin-B**
- Streptomyces nodosus*
 - Streptomyces fradiae*
 - Streptomyces aureofaciens*
 - Streptomyces erythreus*
- 41. Which of following toxins is converted into toxoid**
- Exotoxin
 - Endotoxin
 - Both (a) and (b)
 - None of these
- 42. Which of the following cells is involved in cell-mediated immunity**
- Leukaemia
 - T cells
 - Mast cells
 - Thrombocytes
- 43. Which of the following convey the longest-lasting immunity to an infectious agent**
- Naturally acquired passive immunity
 - Artificially acquired passive immunity
 - Naturally acquired active immunity
 - All of these
- 44. Which immunoglobulin can pass through placenta**
- IgD
 - IgE
 - IgM
 - IgG
- 45. Which is working principle of ELISA**
- Ag-Ab neutralization
 - Ag-Ab complex
 - Both (a) and (b)
 - None of these
- 46. Schick test is specially designed to diagnosis of**
- Scarlet fever
 - Diphtheria
 - Cancer
 - Syphilis
- 47. Which of the following tests is used for the diagnosis of syphilis**
- Widal test
 - VDRL test
 - Coombs test
 - Weil-Felix test
- 48. Which term is commonly used for antisera that contain antibodies against toxins**
- Antibacterial sera
 - Antiviral sera
 - Antitoxins
 - Immunoglobulins
- 49. Which animal is commonly used to produce antitoxic sera**
- Dogs
 - Cats
 - Horses
 - Cows
- 50. The TAB vaccine is administered subcutaneously to protect against which disease**
- Tetanus
 - Cholera
 - Typhoid
 - Measles

PHARMACEUTICAL BIOTECHNOLOGY

- Who is known as the father of tissue culture**
 - Bonner
 - Laibach
 - Haberlandt
 - Gautheret
- The ability of single cells to divide and produce all differentiated cells in the entity**
 - Totipotency
 - Multipotent
 - Pluripotent
 - Unipotent



49. In 1983 who used recombinant DNA technology to produce insulin

- (a) Eli Lilly (b) Emily Lilly
(c) Lilly Rose (d) Amy Sanger

50. Damage and errors in DNA cause

- (a) Mutation (b) DNA repair
(c) Translation (d) Transcription

PHARMA MARKETING MANAGEMENT

1. Who is known as the Father of Management

- (a) Alfred Marshall (b) Mathew Bolton
(c) F. W. Taylor (d) Henry Gantt

2. All of the following are elements of planning EXCEPT

- (a) Developing Plans
(b) Monitoring Performance
(c) Establishing Strategies
(d) Coordinate Activities

3. What function in pharmaceutical management focuses on drug efficacy and safety

- (a) Commercial
(b) Medical affairs
(c) Analytical testing
(d) Information management

4. According to Fayol, which function of management involves ensuring tasks are completed as planned

- (a) Organizing (b) Leading
(c) Controlling (d) Staffing

5. Rensis Likert developed a scale to measure which organizational variable

- (a) Profitability
(b) Employee satisfaction
(c) Market share
(d) Technological advancements

6. What does the control function of management primarily focus on

- (a) Setting goals

- (b) Allocating resources
(c) Monitoring performance
(d) Providing incentives

7. Which function of management ensures that activities are in line with plans and objectives

- (a) Organization (b) Motivation
(c) Control (d) Planning

8. The relationship between managed and control subsystems is fundamentally a relationship between

- (a) People
(b) Systems and structures
(c) Processes and procedures
(d) Machines and equipment

9. Operations generated forecasts often not to do with

- (a) Inventory requirements
(b) Resource needs
(c) Time requirements
(d) Sales

10. What is another name for contingency planning

- (a) Synergy planning
(b) Ad hoc planning
(c) Business level planning
(d) Scenario planning

11. In which of the following forecasting technique, subjective inputs obtained from various sources are analyzed

- (a) Judgemental forecast
(b) Time series forecast
(c) Associative model
(d) All of these

12. In which of the following forecasting technique, data obtained from past experience is analyzed

- (a) Judgemental forecast
(b) Time series forecast
(c) Associative model
(d) All of these

45. Cost-benefit analysis for evaluating training is used to determine which of the following

- (a) Rate of investment
- (b) Return on investment
- (c) Rate of interest
- (d) Return on profit

46. Human Resource planning is compulsory for

- (a) Effective employee development programme
- (b) Base for recruitment
- (c) Base for selection policy
- (d) All of these

47. GATT is a legal agreement between

- (a) Companies
- (b) Countries
- (c) Non-governmental organizations
- (d) Individuals

48. When did the GATT come into effect on a provisional basis

- (a) 30 October 1947
- (b) 15 April 1994
- (c) 1 January 1948
- (d) 1 January 1995

49. During which years was the TRIPS agreement negotiated

- (a) 1985-1987
- (b) 1989-1990
- (c) 1992-1994
- (d) 1995-1996

50. When was ISO founded

- (a) 23 February 1946
- (b) 23 February 1947
- (c) 23 February 1950
- (d) 23 February 1960

PHARMACY PRACTICE

1. Which is an example of civil hospital

- (a) Elite hospital
- (b) Budget hospital
- (c) Private hospital
- (d) Teaching hospital

2. On the basis of anatomical and physiological specialization hospital are following types EXCEPT

- (a) Ear, nose and throat hospital

- (b) Orthopaedic Hospital
- (c) Kidney Hospital
- (d) Cancer Hospital

3. Which of the following is NOT a responsibility of a hospital pharmacist

- (a) Medication dispensing
- (b) Drug information provision
- (c) Patient counseling
- (d) Performing surgery

4. For 200 beds hospital the number of pharmacists required

- (a) 8
- (b) 10
- (c) 15
- (d) 5

5. Hepatitis B vaccine requires refrigeration. This means that it must be kept between

- (a) Two to eight degrees
- (b) Eight to fifteen degrees
- (c) Fifteen to twenty-five degrees
- (d) Twenty-five to thirty degrees

6. A system in which medications are dispensed from an automated unit at the point of use is called

- (a) Batching
- (b) Automated dispense system
- (c) Code cart
- (d) Emergency drug procurement

7. Match the following

1. Purchase

2. Inventory

3. Control

[P] Act of exercise, directing, guiding or retaining power Over

[Q] Act of obtaining an article by making payments in terms of money

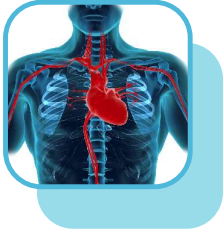
[R] Itemised list of goods with their estimated worth

- (a) 1-[P], 2 -[Q], 3 -[R]
- (b) 1-[Q], 2 -[R], 3 -[P]
- (c) 1-[R], 2 -[Q], 3 -[P]
- (d) 1-[Q], 2 -[P], 3 -[R]

- 37. Which drug combination can cause phenytoin toxicity**
- (a) Phenytoin + Valproic acid
 (b) Penicillin + Probenecid
 (c) Tetracycline + Antacids
 (d) Anticoagulants + Phenylbutazone
- 38. Which food drug interaction can reduce GI absorption**
- (a) MAOIs + Tyramine rich food
 (b) Quinidine + Milk
 (c) Digoxin + Milk
 (d) Tetracycline + Milk
- 39. Which of the following drug causes Phocomelia**
- (a) Thalidomide (b) Paracetamol
 (c) Amoxicillin (d) Heparin
- 40. Gray baby syndrome occur in new born with**
- (a) Tetracycline (b) Chloramphenicol
 (c) Penicillin (d) Erythromycin
- 41. Thalidomide tragedy is related with**
- (a) Teratogenicity
 (b) Allergic reaction
 (c) Hypersensitivity reaction
 (d) Carcinogenicity
- 42. Which of the following is a substance that can counteract a form of poisoning.**
- (a) Antidote
 (b) Gastrointestinal agent
 (c) Astringent
 (d) Antimicrobial agent
- 43. Which of the following is used as antidote for heparin**
- (a) Protamine sulphate
 (b) Warfarin
 (c) BAL
 (d) Glyceryl trinitrate
- 44. Dimercaprol is used in the treatment of toxicity produced by**
- (a) Barbiturate (b) Mercury
 (c) Morphine (d) Cocaine
- 45. Antidotes of carbamates**
- (a) Atropine sulphate
 (b) BAL
 (c) Ammonium molybdate
 (d) EDTA
- 46. Which is used to treat benzodiazepine toxicity**
- (a) Fomepizole (b) Ferritin
 (c) Fluoxetine (d) Flumazenil
- 47. What is the treatment for acute inorganic mercury poisoning**
- (a) Nitrite (b) Dimercaprol
 (c) Deferoxamine (d) Penicillamine
- 48. What is the antidote for warfarin overdose**
- (a) Vitamin K (b) Protamine sulfate
 (c) Naloxone (d) Flumazenil
- 49. The drug used as an antidote of anticholinergic poisoning is**
- (a) Atropine (b) Pyridoxine
 (c) Physostigmine (d) Deferoxamine
- 50. Digibind is used as an antidote for poisoning due to**
- (a) Cholinergics (b) Atropine
 (c) Benzodiazepines (d) Digoxin

**PHARMACEUTICAL JURISPRUDENCE,
 QUALITY ASSURANCE,
 PHARMACEUTICAL REGULATORY
 SCIENCE**

- 1. The Indian Journal of Pharmacy was started by Prof. M.L. Schroff in**
- (a) 1947 (b) 1910
 (c) 1939 (d) 1920
- 2. The full-fledged Indian Pharmacopoeia Committee was formed in 1948. The Chairman of the said committee was**
- (a) Dr. B. N. Ghosh
 (b) Prof. M. L. Schroff
 (c) Dr. R. G. Kar
 (d) None of these



PHARMACOLOGY AND ALLIED SUBJECTS

Always a Step Ahead!

SCAN ME



To Join FREE
Online Test

PHARMACOLOGY AND TOXICOLOGY

- Whom of the following is associated with the discovery of Penicillin**
(a) Alexander flaming (b) Bating and best
(c) Charaka (d) Robert coach
- Essential drugs are**
(a) Life-saving drugs
(b) Drugs that satisfy the priority health care needs of the population
(c) Drugs that must be present in the emergency bag of a doctor
(d) Drugs that are listed in the pharmacopoeia of a country
- An 'Orphan drug' is**
(a) A very cheap drug
(b) A drug which has no therapeutic use
(c) A drug needed for treatment or prevention of a rare disease
(d) A drug that acts on orphan receptors
- Drug products have many types of names. The one that is the official name and refers only to that drug and NOT to a particular product is the**
(a) Generic name (b) Proprietary name
(c) Brand name (d) Chemical name
- From which of the following routes is the bioavailability of the drug likely to be 100%**
(a) Subcutaneous (b) Intravenous
(c) Intramuscular (d) Intradermal
- Which among them is suited for mass inoculations**
(a) Dermo jet
(b) Pellet implantation
(c) Silastic implants
(d) Rectal
- In which route is the drug administered by the Trocar and Cannula**
(a) Pellet implantation
(b) Intravenous
(c) Dermo jet
(d) Intradermal
- The BCG vaccine is given by which route**
(a) Intramuscular (b) Intradermal
(c) Intravenous (d) Subcutaneous injection
- What is characteristic of the intramuscular route of drug administration**
(a) Only water solutions can be injected
(b) Oily solutions can be injected
(c) Opportunity of hypertonic solution injections
(d) The action develops slower, than at oral administration
- Retrobulbar routes of the drug are administered**
(a) Behind the eye ball
(b) In knee joint
(c) In spinal cord
(d) In dermis
- Which angle is an intravenous medication administered at**
(a) 45° (b) 25°
(c) 90° (d) 75°

400. Double antigen consist of combination of following vaccine

- (a) Tetanus and diphtheria
- (b) Pertussis and hepatitis
- (c) Diphtheria and cholera
- (d) Tetanus and pertussis

HUMAN ANATOMY AND PHYSIOLOGY

1. The components of the plasma membrane are

- (a) Proteins and carbohydrates
- (b) Proteins and lipids
- (c) Proteins, lipids and carbohydrates
- (d) Proteins, some nucleic acid and lipids

2. Which structure is directly responsible for the formation of proteins within the cell

- (a) Lysosomes
- (b) Vacuoles
- (c) Centrioles
- (d) Ribosomes

3. Which of the following phenomena is commonly referred as 'cell drinking'

- (a) Pinocytosis
- (b) Exocytosis
- (c) Endocytosis
- (d) Phagocytosis

4. RNA molecules having intrinsic catalytic activity are called as

- (a) mRNAs
- (b) Ribozymes
- (c) snRNAs
- (d) rRNAs

5. Tendons and ligaments are the example of

- (a) Loose connective tissue
- (b) Dense regular connective tissue
- (c) Adipose tissue
- (d) Epithelial tissue

6. The amount of water present in blood plasma is

- (a) 99%
- (b) 90-92%
- (c) 10%
- (d) 55%

7. Which one is correct

- (a) Blood = Plasma + RBC + WBC + Blood platelets
- (b) Lymph = Plasma + RBC + WBC
- (c) Neuron = Cyton + Dendrite + Axon + Synapse

(d) Plasma = Blood + lymphocytes

8. All of the following are granulocytes EXCEPT

- (a) Neutrophils
- (b) Eosinophils
- (c) Basophils
- (d) Lymphocytes and monocytes

9. Which of the following blood groups is universal donor and universal acceptors respectively

- (a) AB, O
- (b) O, AB
- (c) AB, A
- (d) A, AB

10. Which blood type could be safely transfused in an emergency

- (a) AB Rh-
- (b) AB Rh+
- (c) O Rh-
- (d) O Rh+

11. Factor responsible for causing haemophilia

- (a) Factor V
- (b) Factor VII
- (c) Factor VIII
- (d) Factor X

12. Which of the following hormone is NOT secreted by human placenta

- (a) hCG
- (b) LH
- (c) Estrogen
- (d) Progesterone

13. Salivary amylase helps in digestion of which of the following nutrients

- (a) Fats
- (b) Starch
- (c) Vitamin
- (d) Protein

14. The hardest material present in the body is called

- (a) Dentin
- (b) Pulp
- (c) Enamel
- (d) None of these

15. Which of the following is the largest gland

- (a) Liver
- (b) Thymus
- (c) Pancreases
- (d) Thyroid

16. Insulin is produced from which of the following cell

- (a) Alpha cells
- (b) Beta cells
- (c) Delta cells
- (d) F/PP cell

17. Food and chyme are pushed through the digestive system by

- (a) Ingestion
- (b) Mastication
- (c) Assimilation
- (d) Peristalsis

58. Bicuspid valve & mitral valve is found between

- (a) Left atrium and left ventricle
- (c) Right atrium and left ventricle
- (b) Right atrium and right ventricle
- (d) Left atrium and right ventricle

59. 'Heart of heart' is

- (a) SA-node
- (b) AV-node
- (c) Bundle of His
- (d) Purkinje fibres

60. Rate of heartbeat is determined by

- (a) SAN
- (b) AVN
- (c) Purkinje Fibres
- (d) Bundle of His

PATHOPHYSIOLOGY**1. Who coined the term 'Cellular pathology'**

- (a) Louis Pasteur
- (b) Robert Koch
- (c) Rudolf Virchow
- (d) Alexander Fleming

2. Which of the following are components of pathology

- (a) Epidemiology, Prognosis, Therapy, Prevention
- (b) Etiology, Pathogenesis, Morphology, Clinical features
- (c) Diagnosis, Treatment, Prevention, Rehabilitation
- (d) Symptoms, Signs, Laboratory tests, Imaging

3. Leukopenia is characterized by

- (a) Low red blood cell count
- (b) Low white blood cell count
- (c) High platelet count
- (d) Elevated hemoglobin levels

4. Hypoxia is best defined as

- (a) Low levels of oxygen in body tissues
- (b) Low levels of carbon dioxide in the bloodstream
- (c) Excessive levels of oxygen in the bloodstream
- (d) Abnormal accumulation of nitrogen in tissues

5. Myalgia refers to

- (a) Inflammation of muscle tissue
- (b) Muscle weakness
- (c) Muscle aches and pain
- (d) Muscle spasms

6. The term 'Aneurysm' refers to

- (a) Permanent blockage of blood vessels
- (b) Permanent abnormal dilatation of blood vessel
- (c) Abnormal connections in blood vessels
- (d) Abnormal growth of neurons near blood vessels

7. Anisocytosis refers to

- (a) Red blood cells that are unequal in size
- (b) Red blood cells that are irregular in shape
- (c) Red blood cells that have abnormal hemoglobin content
- (d) Red blood cells that are increased in number

8. Hyperplasia is

- (a) Increase in the size of cells
- (b) Increase in the number of cells
- (c) Increase in the number of cellular organelles
- (d) Increase in the size of the organ

9. Apoptosis is alternatively called as

- (a) Ischemic cell death
- (b) Programmed cell death
- (c) Post traumatic cell death
- (d) Ischemic cell injury

10. Irreversible cell injury is associated with

- (a) Clumping of chromatin
- (b) Endoplasmic swelling
- (c) Reduced oxidative phosphorylation
- (d) Profound membrane disturbance

11. Metastasis refers to

- (a) Spreading of Cancer cells to local site
- (b) Formation of Cancer cells
- (c) Spreading of Cancer cells to distant site
- (d) Bone Cancer

- 28. The causative microorganism of Gonorrhoea is**
- (a) *Treponema pallidum*
 - (b) *Neisseria gonorrhoeae*
 - (c) *Hemophilus ducreyi*
 - (d) *Chlamydia trachomatis*
- 29. Which of the following pathogens causes Tuberculosis**
- (a) Virus
 - (b) Bacterium
 - (c) Protozoan
 - (d) Malnutrition
- 30. Typhoid is caused by**
- (a) *Pseudomonas*
 - (b) *Staphylococcus*
 - (c) *Bacillus*
 - (d) *Salmonella typhi*
- 31. What does SIV stand for**
- (a) Simian Immunodeficiency Virus
 - (b) Siluridae Immunodeficiency Virus
 - (c) Synodontidae Immunodeficiency Virus
 - (d) Simultaneous Immunodeficiency Virus
- 32. Akinesia refers to**
- (a) Lack of movement
 - (b) Lack of sleep
 - (c) Slow heart rate
 - (d) Slow body movement
- 33. The Bipolar Disorder is also called**
- (a) Seasonal depression
 - (b) Psychotic depression
 - (c) Manic depression
 - (d) Melancholic depression
- 34. What is the major mechanism involved in development of type I Diabetes Mellitus**
- (a) Insulin resistance
 - (b) Decrease in glucose transporters
 - (c) Destruction of pancreatic cells
 - (d) Decrease in insulin functioning
- 35. What is angina pectoris**
- (a) Pain below the chest
 - (b) Low blood pressure
 - (c) Chest pain caused by coronary heart disease
 - (d) High blood pressure
- 36. Prolonged QT interval is associated with development of**
- (a) Torsade de pointes
 - (b) Atrial flutter
 - (c) Atrial fibrillation
 - (d) Ventricular fibrillation
- 37. Increase total bilirubin, especially direct bilirubin indicates**
- (a) Influenza
 - (b) AMI
 - (c) Pancreatitis
 - (d) COPD
- 38. Responsible for the yellow coloring in Jaundice is**
- (a) Urobilinogen
 - (b) Carotene
 - (c) Bilirubin
 - (d) AST
- 39. Inulin is helpful in measuring**
- (a) GFR
 - (b) Urea
 - (c) Creatinine
 - (d) Uric acid
- 40. Highest elevations with AST is seen in viral**
- (a) Hepatitis
 - (b) Meningitis
 - (c) Influenza
 - (d) Pneumonia

PHARMACOVIGILANCE

- 1. The aim of post-marketing studies is**
- (a) Efficacy of the drug
 - (b) Dosage of the drug
 - (c) Deals with alteration of the drug includes absorption, distribution, binding/storage
 - (d) Safety and comparisons with other medicines
- 2. CFR stands for**
- (a) Code of Federal Regulations
 - (b) Centre of Federal Regulations
 - (c) Code of Federal Register
 - (d) Centre of Federal Regulator
- 3. How many people will be selected for the phase III trial**
- (a) The whole market will be under surveillance
 - (b) 500-3000 peoples
 - (c) 20-300 peoples
 - (d) 20-50 peoples

33. The aim of post-marketing studies is

- (a) Efficacy of the drug
- (b) Dosage of the drug
- (c) Deals with alteration of the drug includes absorption, distribution, binding/storage
- (d) To know rare adverse effects of the drug

34. The geriatric population should be included in the following Phase of the clinical trial

- (a) Phase I
- (b) Phase II
- (c) Phase III
- (d) Phase IV

35. The purpose of preclinical testing is

- (a) To verify that a drug is sufficiently safe and effective to be tested in humans
- (b) To undergo preliminary testing in healthy humans to monitor the effects of the drug
- (c) To create a basic outline for the larger scale future tests on a widespread population
- (d) To develop method of drug analysis

CELL AND MOLECULAR BIOLOGY**1. What is the name of the region where double-stranded single circular DNA is found in the prokaryotic cell**

- (a) Protonucleus
- (b) Nucleus
- (c) Nucleoid
- (d) Nucleoplasm

2. In prokaryotic cells, ribosomes are

- (a) 70S
- (b) 80S
- (c) 60S + 40S
- (d) 50S + 40S

3. A difference between eukaryotic and prokaryotic cells is in having

- (a) Ribosomes
- (b) Cell wall
- (c) Nuclear membrane
- (d) None of the above

4. DNA synthesis can be measured by estimating the incorporation of radiolabeled

- (a) Thymine
- (b) Guanine

- (c) Cytosine
- (d) Adenine

5. A human cell containing 22 autosomes and a Y chromosome is

- (a) A sperm
- (b) An egg
- (c) A somatic cell of a female
- (d) A somatic cell of a male

6. Which of the following are not found in plant cells

- (a) Mitochondria
- (b) Glyoxysomes
- (c) Centrosomes
- (d) Golgi apparatus

7. The study of the structure and composition of cells is called

- (a) Cytology
- (b) Anthology
- (c) Ecology
- (d) Phenology

8. Which of the following cell organelles is called digestive bags

- (a) Nucleus
- (b) Lysosomes
- (c) Chloroplast
- (d) Mitochondria

9. Which of the following cell organelles contains RNA

- (a) Mitochondria
- (b) Plastids
- (c) Lysosomes
- (d) Ribosomes

10. Pick the right difference between a DNA and RNA

- (a) Sugar and Phosphate
- (b) Sugar and Purines
- (c) Purines and Phosphate
- (d) Sugar and Pyrimidines

11. The removal of which enzyme affects the synthesis of hnRNA in eukaryotes

- (a) RNA polymerase II
- (b) RNA primase
- (c) RNA polymerase III
- (d) RNA polymerase I

12. Which enzyme is used to join nicks in the DNA strand

- (a) Primase
- (b) DNA polymerase
- (c) DNA ligase
- (d) Endonuclease

34. X-linked recessive gene is

- (a) Always expressed in male
- (b) Always expressed in female
- (c) Never expressed in males
- (d) Always expressed in males and female

35. What class of cells are reproduced during mitosis

- (a) Germ cells (b) Somatic cells
- (c) Gametes (d) Haploid cells

EXPERIMENTAL PHARMACOLOGY**1. Full form of CPCSEA**

- (a) Committee for the purpose of control and supervision of environmental on animals
- (b) Committee for the purpose of control and supervision of experiments on animals
- (c) Committee for the purpose of control and Specification of experiments on animals
- (d) Committee for the purpose of control and supervision of experiments on aim

2. Which types of light used in animal house for adequate illumination

- (a) Sodium lamp
- (b) Fluorescent light
- (c) Ultraviolet light
- (d) Normal LED light

3. OECD-420 guidelines stand for the

- (a) Acute oral toxicity-conventional acute toxicity test
- (b) Acute oral toxicity-fixed dose procedure
- (c) Acute oral toxicity-acute toxic class method
- (d) Acute oral toxicity-up and down procedure

4. Which animal is used in experimental asthma to study bronchodilators

- (a) Albino rat (b) Guinea pig
- (c) Albino mouse (d) Frog

5. Guinea pig ileum is used to study the drugs

- (a) Antisecretory (b) Antispasmodic
- (c) Antihistaminic (d) Local anesthetics

6. Smallest laboratory animal used in experimental pharmacology

- (a) Albino rat (b) Albino mice
- (c) Frog (d) Hamster

7. In swim test imipramine shows

- (a) Decreases the immobility time
- (b) Increases the immobility time
- (c) Increases reflex action
- (d) Decreases reflex action

8. Which of the following drug used in hot plate method

- (a) Morphine (b) Diazepam
- (c) Chlorpromazine (d) Saline

9. In swim test imipramine shows

- (a) Decreases the immobility time
- (b) Increases the immobility time
- (c) Increases reflex action
- (d) Decreases reflex action

10. Which of the following drug used in hot plate method

- (a) Morphine (b) Diazepam
- (c) Chlorpromazine (d) Saline

11. The starting point for a literature search is

- (a) Primary data (b) Tertiary data
- (c) Secondary data (d) Some other data

12. Why is it important for a researcher to review the literature

- (a) Because it will find if anyone has done the work before
- (b) Because it is traditional
- (c) Because it identifies like-minded researchers
- (d) Because it shows time has been spent on the subject

13. Schematic literature review is

- (a) One which generates a literature review using a treasure hunt system
- (b) A replicable, scientific, and transparent process
- (c) One which gives equal attention to the principal contributors to the area
- (d) A manufactured system for generating literature reviews tailored to your subject



PHARMACEUTICAL CHEMISTRY AND ALLIED SUBJECTS

Always a Step Ahead!

PHARMACEUTICAL INORGANIC CHEMISTRY

- In limit test of iron, ferrous thioglycolate complex form in presence of**
(a) Hydrochloric acid (b) Citric acid
(c) Acetic acid (d) Glutamic acid
- Reagent used in limit test of chloride**
(a) Silver nitrate (b) Nitric acid
(c) Nitric oxide (d) Ammonia
- In limit test for sulphate name the acid which prevent the precipitation of other acid radicals with barium chloride solution**
(a) Hydrochloric acid (b) NaOH
(c) Sulphuric acid (d) Acetic acid
- The limit test for Arsenic is based upon which Test**
(a) Gutzeit test (b) Nitric acid
(c) Nitric oxide (d) Sedimentation test
- Limit test are _____ test designed to identify and control small quantities of impurities**
(a) Qualitative (b) Quantitative
(c) Imperative (d) Functional
- In the Limit Test of Arsenic which of the following forms yellow coloured stain on reaction with Mercuric Chloride paper**
(a) Potassium iodide (b) Arsenic Acid
(c) Arsenious Acid (d) Arsine Gas
- Limit test are quantitative test designed to identify and control _____ quantities of impurities**
(a) Small (b) Large
(c) Medium (d) Extra large
- Limit test for iron purple colour is due to formation of**
(a) H_2O_2
(b) Potassium per magnate
(c) Calcium chloride
(d) Alkaline medium
- The impurities which are having a toxic effect**
(a) Chloride
(b) Sulphate
(c) Lead and arsenic salts
(d) Iron
- According to Indian Pharmacopoeia, limit test of chloride, sulphate and iron is performed using**
(a) Measuring cylinder
(b) Nessler cylinder
(c) Gutzeit apparatus
(d) Flask
- Measurement of pH can be done using**
(a) Hydrometer (b) Pycnometer
(c) Thermometer (d) pH meter
- Buffer solutions are those which resist the change in**
(a) pH (b) Colour
(c) Acidity (d) Alkalinity
- According to Bronsted Lowry concept, an acid is**
(a) Proton acceptor
(b) Proton donor
(c) Proton and electron donor
(d) Proton and electron acceptor

92. Self-oxidation-reduction reaction

- (a) Cannizzaro Reaction
- (b) Corey-House synthesis
- (c) Claisen-Schmidt reactions
- (d) Carbylamine Reaction

93. The catalyst used Clemmensen reduction reaction

- (a) LiAlH_4
- (b) H_2 and Pt
- (c) KOH
- (d) Zn-Hg with conc. HCl

94. Reduction of aldehydes and ketones into hydrocarbons using zinc amalgam and conc. HCl is called

- (a) Cope reduction
- (b) Dow reduction
- (c) Wolff-Kishner reduction
- (d) Clemmensen reduction

95. What is the main product of Frankland's reaction

- (a) Alkane
- (b) Alkene
- (c) Alkyne
- (d) Alcohol

96. Which type of compound is produced in the Fittig reaction

- (a) Alkane
- (b) Biaryl compound
- (c) Alkyne
- (d) Alcohol

97. Lindlar's catalyst is

- (a) Platinum bromide + Calcium oxide + Lead acetate
- (b) Palladium chloride + Calcium carbonate + Lead acetate
- (c) Chromic acid + Lead acetate + Sulfuric acid
- (d) Nitric acid + Sulfuric acid and + Palladium chloride

98. Perkin reaction is used for the synthesis of

- (a) α , β - unsaturated Aldehyde
- (b) α , β - unsaturated Acid
- (c) α , β - unsaturated Ester
- (d) α , β - unsaturated Ketone

99. What is the primary transformation in the Wurtz reaction

- (a) Conversion of alkyl halides to alkanes
- (b) Formation of an alkyl halide from an alkane
- (c) Conversion of aldehydes to alcohols
- (d) Formation of an alkene from an alkyl halide

100. $\text{CH}_3\text{CH}_2\text{OH}$ and $\text{CH}_3\text{-O-CH}_3$ are the examples of

- (a) Functional isomerism
- (b) Chain isomerism
- (c) Metamerism
- (d) Position isomerism

MEDICINAL CHEMISTRY**1. Craig plot is used in**

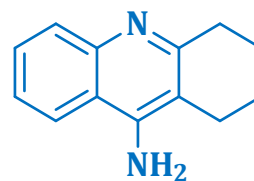
- (a) Drug designing
- (b) Protein structure determination
- (c) Nucleic acid structure determination
- (d) Carbohydrate structure determination

2. What is Exploration of Leads

- (a) Search of new molecules
- (b) Assessment
- (c) Chemical modelling
- (d) Nomenclature of drugs

3. Heterocyclic ring system present in Physostigmine is

- (a) Indole
- (b) Pyridine
- (c) Pyrimidine
- (d) Thiophene

4. This structure is of drug used in Alzheimer's disease

- (a) Tacrine
- (b) Donepezil
- (c) Rivastigmine
- (d) Galantamine

5. Bioactive heterocyclic ring Quinclidium present in

- (a) Hyoscine
- (b) Clidinium
- (c) Telenzepine
- (d) None of these

95. Which of the following is a primary goal of Computer-Aided Drug Design

- (a) To replace all laboratory experiments
- (b) To reduce the cost and time of drug development
- (c) To increase the complexity of drug molecules
- (d) To solely focus on the synthesis of drug molecules

96. Which of the following methods is most commonly used in structure-based drug design

- (a) Homology modeling
- (b) QSAR (Quantitative Structure-Activity Relationship)
- (c) Molecular docking
- (d) Virtual screening

97. In CADD, what is the purpose of virtual screening

- (a) To visualize the chemical structure of drug molecules
- (b) To predict the solubility of drug compounds
- (c) To identify potential drug candidates from large compound libraries
- (d) To calculate the molecular weight of drug molecules

98. What is the significance of QSAR in drug design

- (a) It determines the 3D structure of proteins
- (b) It establishes a relationship between chemical structure and biological activity
- (c) It calculates the molecular weight of a drug
- (d) It predicts the toxicity of a drug in humans

99. Which term refers to the process of optimizing a drug molecule's structure to improve its pharmacokinetic and pharmacodynamic properties

- (a) Hit identification
- (b) Lead optimization
- (c) Virtual screening
- (d) Molecular dynamics

100. Following is classified as thyroid hormone synthesis inhibitor

- (a) Methimazole
- (b) Metronidazole
- (c) Fluconazole
- (d) Miconazole

PHARMACEUTICAL ANALYSIS**1. Closeness of a measured value to the true or accepted value is known as**

- (a) Accuracy
- (b) Deviation
- (c) Precision
- (d) Bias

2. Accidental or random errors are known as

- (a) Indeterminate errors
- (b) Determinate errors
- (c) Instrument errors
- (d) Chemical error

3. Precision is calculated by

- (a) Standard deviation
- (b) Mean
- (c) Mode
- (d) Median

4. Errors that arise due to reproducible inaccuracies that are consistently in the same direction are called

- (a) Random errors
- (b) Systematic errors
- (c) Descriptive errors
- (d) Inferential errors

5. Which of following is not a primary standard

- (a) Sodium carbonate
- (b) KBr
- (c) Oxalic acid
- (d) NaOH

6. In titration analysis, what is the purpose of the titrant

- (a) To be the substance being titrated
- (b) To be the solution of known concentration added to the analyte
- (c) To be the indicator used to determine the endpoint
- (d) To be the solvent used to dissolve the analyte

ESR spectroscopy

- (a) Ultraviolet radiation
- (b) Microwave radiation
- (c) Infrared radiation
- (d) X-rays

117. The equation $n\lambda = 2d \sin\theta$ is related to

- (a) X-ray diffraction
- (b) ESR
- (c) Raman spectroscopy
- (d) NMR

118. Xenon arc lamp is the source of light in

- (a) Spectrofluorometer
- (b) IR Spectrophotometer
- (c) Flame photometer
- (d) Calorimeter

119. Which of the following is not a fluorescent indicator

- (a) Eosin
- (b) Quinine sulphate
- (c) Acridine
- (d) Methylene red

120. The analyte is used in the form of a solution flame photometry because it should undergo

- (a) Evaporation
- (b) Condensation
- (c) Nebulization
- (d) Precipitation

BIOCHEMISTRY**1. Carbohydrates have hydrogen oxygen atom ratio of**

- (a) 1 : 2
- (b) 3 : 1
- (c) 1 : 3
- (d) 2 : 1

2. Which of the following best describes the role of carbohydrates in the body

- (a) Primary source of structural materials
- (b) Major energy source
- (c) Main component of cell membranes
- (d) Catalyst for biochemical reactions

3. A pentose sugar is

- (a) Erythrose
- (b) Ribulose
- (c) Glucose
- (d) Dihydroxyacetone

4. What is the primary purpose of the Kiliani-Fischer synthesis in carbohydrate chemistry

- (a) To decrease the chain length of an aldose by removing one carbon at a time
- (b) To convert ketoses into aldoses through isomerization
- (c) To increase the chain length of an aldose by one carbon at a time
- (d) To synthesize polysaccharides from monosaccharides

5. Two sugars which differ from one another only in configuration around a single carbon atom are termed

- (a) Epimers
- (b) Anomers
- (c) Optical isomers
- (d) Stereoisomers

6. Which of the following pairs are C-4 epimers

- (a) D-glucose and D-galactose
- (b) D-glucose and D-fructose
- (c) D-glucose and D-mannose
- (d) D-glucose and D-xylulose

7. In the Haworth projection, what type of ring structure does pyranose represent

- (a) Four-membered ring
- (b) Five-membered ring
- (c) Six-membered ring
- (d) Seven-membered ring

8. Glucose upon treatment with nitric acid yields

- (a) Gluconic acid
- (b) Glucaric acid
- (c) Glucitol
- (d) Heptanoic acid

9. A positive Benedict's test is not given by

- (a) Sucrose
- (b) Lactose
- (c) Maltose
- (d) Glucose

10. Iodine gives a red colour with

- (a) Starch
- (b) Dextrin
- (c) Agar
- (d) Inulin



PHARMACOGNOSY

Always a Step Ahead!

SCAN ME



To Join FREE
Online Test

PHARMACOGNOSY AND PHYTOCHEMISTRY, DIETARY SUPPLEMENTS AND NUTRACEUTICALS, HERBAL DRUG TECHNOLOGY, QUALITY CONTROL AND STANDARDIZATION OF HERBALS

- The term 'Pharmacognosy' was first introduced by**
(a) Pelletier (b) Sertuerner
(c) Galen (d) Seydler
- Which among the following is incorrect pair**
(a) Dioscorides – Father of Pharmacognosy
(b) Hippocrates – Father of experimental physiology
(c) Sushrut – Father of surgery
(d) Aristotle – Father of natural history
- Charaka, a physician belonged to which system of medicine**
(a) Unani (b) Siddha
(c) Homeopathy (d) Ayurveda
- Plant growth regulator whose discovery is related to "foolish seedling disease" of rice**
(a) Gibberellin (b) Auxin
(c) Cytokinin (d) Ethylene
- Pharmacognosy is an outgrowth of**
(a) Atharvaveda (b) Materia Medica
(c) Pharmacopoeia (d) Charak Samhita
- Who is regarded as the father of surgery in ancient India**
(a) Sushrutha (b) Charaka
(c) Vasavadatta (d) Dhanvantari
- Name the emperor who written the oldest known herbal Pen -t' sao**
(a) Shen Nung (b) Charaka
(c) Seydler (d) Pelletier
- Who was the first pharmacist**
(a) Galen (b) Seydler
(c) Sertuerner (d) Aristotle
- Meda as one of the Saptdhatu refer to**
(a) Fat tissue (b) Blood
(c) Lymph (d) Semen
- The major property of Ayurvedic herbs, "Rasa" indicates**
(a) Taste
(b) Post digestive effect
(c) Potency
(d) Physicochemical properties
- Alkaline substances obtained from the ash of crude drugs are known as _____ in Ayurveda**
(a) Pisti (b) Bhasma
(c) Dravaka (d) Kshara
- Which of the following traditional medicines is a semisolid dosage form**
(a) Avaleha (b) Asava
(c) Vatika (d) Sattva
- Thick extracts of drugs prepared by boiling decoction of drug with sugar/honey is _____ ayurvedic dosage form**
(a) Netrabindu (b) Asavas
(c) Sattva (d) Avaleha

- 32. Dhanvantari is the divine founder of**
(a) Homeopathy (b) Ayurveda
(c) Unani (d) Allopathy
- 33. In 1852 the process of extraction of alkaloid was developed by**
(a) Posselt and Reiman
(b) Stas and Otto
(c) Hardy and Galloway
(d) William Withering
- 34. Scientist who introduced the binomial system for naming of plants**
(a) Dioscorides
(b) Friedrich Sertuerner
(c) Greenish and Collin
(d) Swede Linnaeus
- 35. The Yin and Yang Theory is related to**
(a) Ayurveda (b) Siddha system
(c) Chinese system (d) Homeopathy
- 36. Who among the following belongs to Plant kingdom**
(a) Charaka (b) Sushruta
(c) Theophrastus (d) Hippocrates
- 37. Kamboh system of medicine is a**
(a) Unani system of medicine
(b) Japanese system of medicine
(c) Chinese system of medicine
(d) Turkish system of medicine
- 38. The name 'Pharmacognosy' is derived from two Greek words**
(a) Analecta and Pharma
(b) Pharmakon and Gignosco
(c) Gignosco and Pharma
(d) None of these
- 39. Fruits which are derived from Umbelliferae are**
(a) Pericarp (b) Cremocarp
(c) Epicarp (d) Mesocarp
- 40. The classification of crude drugs, wherein, equal importance is given to their taxonomy and biogenesis is**
(a) Chemical classification
(b) Taxonomical classification
(c) Chemotaxonomical classification
(d) Pharmacological classification
- 41. What you mean by botanical identity of a medicinal plant**
(a) Species name
(b) Genus, species, subspecies/variety, author and family
(c) Genus, species, subspecies/variety, author, family and active principles
(d) Genus and species
- 42. Liquorice, Ipecacuanha and Vasaka possess similar pharmacological effect to that of**
(a) Bronchodilator (b) Antitussive
(c) Expectorant (d) Laxative
- 43. Drug is not under the class of organized drug**
(a) Leaves (b) Flowers
(c) Fruits (d) Gums
- 44. Plant used as an antimalarial drug is**
(a) Fennel (b) Coriander
(c) Artemisia (d) Liquorice
- 45. Paraffin wax tinged yellow and substituted for yellow bees wax is which of the following types of adulteration**
(a) Substitution by sub-standard commercial variety
(b) Substitution by artificially manufactured substitutes
(c) Substitution with superficially similar but inferior drugs
(d) Substitution with exhausted drug
- 46. Step of preparation of crude drug in which sand, dirt, and foreign organic matter from crude drug are removed is called as**
(a) Dribbling (b) Garbling
(c) Sophistication (d) Layering



MISCELLANEOUS TOPICS

Always a Step Ahead!

SCAN ME



To Join FREE
Online Test

REMEDIAL BIOLOGY/REMEDIAL MATHEMATICS

- Who is also called the "Darwin of the 20th century"
(a) Lamarck (b) Ernst Mayr
(c) Carolus Linnaeus (d) Robert May
- The study of fish culture is called
(a) Ophiology (b) Herpetology
(c) Ichthyology (d) Pisciculture
- National Botanical Research Institute is located in
(a) Shimla (b) Dehradun
(c) Howrah (d) Lucknow
- The order of matrix A is 2×3 and B is 3×3 the order of AB is
(a) 1×3 (b) 3×3
(c) 2×3 (d) None of these
- A matrix contains 48 elements then which of the following CANNOT be the number of rows
(a) 18 (b) 16
(c) 8 (d) 24
- For which one of the following differential equations is $y = a$ a solution
(a) $y + x = 2x$ (b) $y + x = 1$
(c) $2 + = 0$ (d) $2 + =$
- The solution of the simultaneous equations $+ = 4$, $3x - y = 6$ is
(a) $x = 4, y = 6$ (b) $x = 2, y = 0$
(c) $x = 1, y = 2$ (d) $x = , y = 2$
- Which of the lines defined by the following equations is parallel to the y-axis
(a) $y = x$ (b) $y = x$
(c) $y = 6$ (d) $x = 4$
- The two straight lines are parallel then their slopes are
(a) Equal
(b) Not equal
(c) Zero
(d) Reciprocal to each other
- What is the y intercept of the line $y = -3 + 4x$
(a) -3 (b) 4 (c) 3 (d) -4
What is the x intercept of the line $y = -3x + 9$
(a) -3 (b) 9 (c) 3 (d) -9
- The derivative of $\sin x$ is
(a) $\cos x$ (b) $-\cos x$
(c) $\tan x$ (d) None of these
- Which of the lines defined by the following equations is parallel to the y-axis
(a) $y = x$ (b) $y = x$
(c) $y = 6$ (d) $x = 4$
- If two circles touch each other internally at ___ points
(a) 1 (b) 2 (c) 0 (d) 3
- Sum of angles in a triangle is
(a) 180 (b) 90
(c) 0 (d) None of these
- In a "ABC , if $a \cos A = b \cos B$ then the triangle is
(a) Isoceles
(b) Right angled isoceles
(c) Equilateral
(d) None of these

16. Which of the following is a symbiotic nitrogen fixer

- (a) Frankia (b) Azolla
(c) Glomus (d) Azotobacter

17. One of the free-living, anaerobic nitrogen fixer is

- (a) Beijernickia (b) Rhodospirillum
(c) Rhizobium (d) Azotobacter

18. The function of leghaemoglobin in the root nodules of legumes is

- (a) Inhibition of nitrogenase activity
(b) Oxygen removal
(c) Nodule differentiation
(d) Expression of nitrogen

19. Which one is a C4 plant

- (a) Papaya (b) Pea
(c) Potato (d) Maize/Corn

20. Which element is located at the centre of the porphyrin ring in chlorophyll

- (a) Manganese (b) Calcium
(c) Magnesium (d) Potassium

COMPUTER APPLICATIONS IN PHARMACY

1. The computer-aided design (CAD) hardware doesn't include

- (a) Graphic display terminals
(b) Computer
(c) Computer programmes
(d) Keyboard

2. How many types of CAD are there

- (a) 6 (b) 4
(c) 2 (d) 5

3. PDF/A format is

- (a) Programming language
(b) Software programme
(c) File format for Long term archiving
(d) Computer hardware

4. Which of following softwares used in hospital pharmacy

- (a) Micromedex (b) PubMed
(c) BIOSIS (d) All of these

5. Full form of PAD

- (a) Pharmacy automated drug interaction screening
(b) Pharmacy automated drugs
(c) Pharmacy arrangement device
(d) All of these

6. DIC stands for

- (a) Drug Innovative Centre
(b) Drug Implementation Centre
(c) Drug information Centre
(d) None of these

7. _____ Computer programme are made for drug interaction screening.

- (a) MEDIPHOR (b) MEDLINE
(c) MEDLARS (d) All the above

8. The stepwise method for solving problems in computer science is called

- (a) Flowchart (b) Algorithm
(c) Procedure (d) Sequential design

9. The computational methodology that tries to find the bestmatching between two molecule, a receptor and ligand is called

- (a) Molecular matching
(b) Molecular docking
(c) Molecular fitting
(d) Molecule affinity checking

10. 'Invitro' in latin terms means

- (a) Within the glass (b) Within the lab
(c) Outside the lab (d) Outside the glass

11. The term used to refer something 'performed on computer or computer simulation'

- (a) Dry lab (b) Web lab
(c) In vitro (d) In silico

12. A data base of current sequence map of the human genome is called

- (a) OMIM (b) HGMD
(c) Golden path (d) Gene Cards

- (c) Ordinal (d) Nominal
19. Which of the following tests would be an example of a non-parametric method
- (a) Z test (b) T test
(c) Sign test (d) All of these
20. The Wilcoxon Rank-Sum test used to compare
- (a) Two populations
(b) Three Populations
(c) A sample mean to the population mean
(d) Any number of populations

SOCIAL AND PREVENTIVE PHARMACY

1. The World Health Day is celebrated on
- (a) 1st March (b) 7th April
(c) 6th October (d) 10th December
2. Cleanliness, physical exercise, rest and sleep are a part of
- (a) Hygiene (b) Social hygiene
(c) Personal hygiene (d) None of the above
3. Which of the following diseases is not caused by bacteria
- (a) Typhoid (b) Poliomyelitis
(c) Tuberculosis (d) All of these
4. Pathogens means
- (a) Microorganisms which causes disease
(b) Organisms which are found in animal
(c) Organisms which are beneficial for us
(d) Organisms which are found in plants
5. Widal test is performed
- (a) To identify the typhoid fever
(b) To identify the AIDS
(c) To identify the causes of Diarrhoea
(d) To identify the causes of Dysentery
6. The mode of obtaining food for growth, energy, repair, and maintenance is called
- (a) Carbohydrate (b) Nutrition
(c) Calorie (d) Fatty acid
7. Plague is caused by the which bacterium
- (a) Yersinia pseudotuberculosis
(b) Yersinia pestis
- (c) Yersinia enterocolitica
(d) None of these
8. Ringworm in humans is caused by
- (a) Fungi (b) Nematodes
(c) Viruses (d) Bacteria
9. Which diseases are also called inborn diseases
- (a) Infected (b) Contagious
(c) Acquired (d) Congenital
10. Which of the following body fluids contains high concentration of HIV
- (a) Saliva (b) Vaginal secretions
(c) Urine (d) Vomit
11. Which cells are mainly affected by HIV
- (a) CD-4 T cells (b) B cells
(c) Neutrophils (d) RBCs
12. National AIDS Helpline number (Toll Free) was started on
- (a) 1st December 2012
(b) 1st December 2013
(c) 1st December 2014
(d) 1st December 2016
13. Viral nucleic acids can be detected by which of the following techniques
- (a) Viral isolation (b) PCR
(c) Western Blotting (d) ELISA
14. On which date the World Health Organization recognize to celebrate the void tuberculosis day
- (a) 24th March (b) 7th April
(c) 24th April (d) 4th November
15. Severe Acute Respiratory Syndrome is caused by the infection with which type of
- (b) Severe acute Respiratory symptoms
(c) Severe actual respiratory symptoms
(d) Serious acute respiratory syndrome
18. "Whooping cough" in children is caused by which of the following pathogen
- (a) *Streptococcus pneumoniae*
(b) *Bordetella pertussis*
(c) *Mycobacterium tuberculosis*



NON-PHARMA PORTION

Always a Step Ahead!

SCAN ME



To Join FREE
Online Test

GENERAL ARITHMETICS

- $2115 \div = 94 \times 15$
(a) 1.25 (b) 2.75
(c) 1.5 (d) 3
- The selling price of 32 items is equal to the cost price of 38 items. Find the profit percentage
(a) 16.25% (b) 15.79%
(c) 18.75% (d) 19.25%
- 170% of 1140 =
(a) 1938 (b) 1824
(c) 1968 (d) 1881
- Two pipes can fill a tank in 20 hrs and 30 hrs respectively. If both the pipes are opened, then in how much time the tank will be filled
(a) 10 Hours (b) 12 Hours
(c) 18 Hours (d) 15 Hours
- 15% of 180 + % of 250 = 11% of 700
(a) 25 (b) 20
(c) 18 (d) 16
- The compound interest on a sum of money at 5% per annum for 3 years is 6305. Find the simple interest (in) for the same sum at the same rate of interest for the same number of years.
(a) 4,000 (b) 6,000
(c) 5,000 (d) 3,600
- Nidhi takes 3 hours 45 minutes to walk from one place and return to the same place by bicycle, it takes 4 hours 20 minutes to walk. So how long will it take to get on the cycle.
(a) 3 hours 10 minutes
(b) 3 hours 35 minutes
(c) 3 hours 45 minutes
(d) 3 hours 15 minutes
- The ratio of the number of boys and girls in a school is 3: 2. If 20% of the boys and 30% of the girls are scholarship holders, then the percentage of students who do not get scholarship, is
(a) 50% (b) 72%
(c) 75% (d) 76%
- $\sqrt{64009} =$
(a) 803 (b) 363
(c) 253 (d) 347
- The average of 5 consecutive natural numbers is m. If the next 3 consecutive natural numbers are included, then how much does the average of these 8 natural numbers exceed m
(a) 2 (b) 1 (c) 1.4 (d) 1.5
- If the price of eraser is reduced by 25% a person can buy 2 more erasers for a rupee. How many erasers are available for a rupee
(a) 8 (b) 6 (c) 4 (d) 2
- Fresh grapes contain 80% water while dry grapes contain 10% water. If the weight of dry grapes is 250 kg, what was its total weight when it was fresh
(a) 1000 kg (b) 1100 kg
(c) 1125 kg (d) 1225 kg

88. The L.C.M. of 3, 0.09 and 2.7 is
 (a) 2.7 (b) 0.27
 (c) 0.027 (d) 27
89. The least perfect square number divisible by each one of 3, 4, 5, 6, 8 is
 (a) 900 (b) 1200
 (c) 2500 (d) 3600
90. On dividing a given number by 899, we get 63 as remainder. If the same number is divided by 29, what will be the remainder
 (a) 3 (b) 1
 (c) 5 (d) 0
91. On dividing a given number by 899, we get 63 as remainder. If the same number is divided by 29, what will be the remainder
 (a) 3 (b) 1
 (c) 5 (d) 0
92. Three-fifth of the square of a number is 126.15. What is the number
 (a) 14.5 (b) 75.69
 (c) 145 (d) 210.25
93. Some students planned a picnic. The budget for food was Rs 500. But, 5 of them failed to go and thus the cost of food for each member increased by Rs 5. How many students attended the picnic
 (a) 15 (b) 20
 (d) 30 (c) 25
94. By what least number must 3600 be divided to get a perfect cube
 (a) 9 (b) 50
 (c) 300 (d) 450
95. By what least number must 21600 be multiplied to get a perfect cube
 (a) 6 (b) 10
 (c) 30 (d) 60
96. What is the largest number of 5 digits which is completely divisible by 91
 (a) 99918 (b) 99921
 (c) 99981 (d) 99971
97. The volume of a cubical box is 15.625 cu.m. Each side of the box measures
 (a) 3.5 m (b) 2.5 m
 (c) 5.25 m (d) 3.25 m
98. The smallest 5 digit number divisible by 41 is
 (a) 10045 (b) 10041
 (c) 10004 (d) 41000
99. When a certain number is multiplied by 13, the product consists entirely of fives. The smallest such number is
 (a) 41625 (b) 42515
 (c) 42735 (d) 42135
100. When 2525 is divided by 26, the remainder is
 (a) 1 (b) 2 (c) 24 (d) 25

GENERAL INTELLIGENCE AND REASONING

1. Select the related word from the given alternatives
Smell: Flower:: Taste: ?
 (a) Water (b) Salt
 (c) Food (d) Sweet
2. Choose the correct alternative, which represent the same relationship as first two bears
957: 735:: 833: ?
 (a) 338 (b) 383
 (c) 611 (d) 683
3. What should come is place of question mark (?)
MAMTA: REPVB:: PUNAM: ?
 (a) NCQYU (b) UYQCN
 (c) UZSFR (d) RFSZU
4. Select the pair in which the letter-groups are similarly related as in the given pair
RPKD: OKPG:: ESWK: ?
 (a) HSWH (b) BWSN
 (c) BSWN (d) HWSH

21. **Directions:** In each of the following questions, there is a certain relation between two given words on one side of:: and one word is given on another side of while an other word is to be found from the given alternatives, having the same relation with this word as the words of the given pair bear. Choose the best alternative.

Monotony: Variety:: Crudeness:?

- (a) Refinement
- (b) Raw
- (c) Sobriety
- (d) Simplicity

22. **Drama is related to Director in the same way as Magazine is related to _____**

- (a) Story
- (b) Editor
- (c) Reader
- (d) Printer

23. **MAD: JXA:: RUN:?**

- (a) ORK
- (b) OSQ
- (c) PRJ
- (d) UXQ

24. **Find the correct number series**

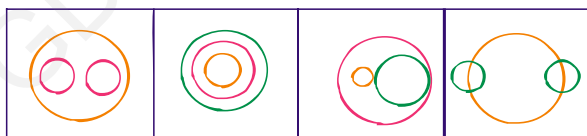
1, 9, 25, 49, ?, 121

- (a) 64
- (b) 81
- (c) 91
- (d) 100

25. **Rajesh moves straight from his school a distance of 5 km, then he turns to his right and travels a distance of 3 km. Then, he turns to his right and travels a distance of 2 km and reaches his home. If his home is South-East direction from school. In which direction he started**

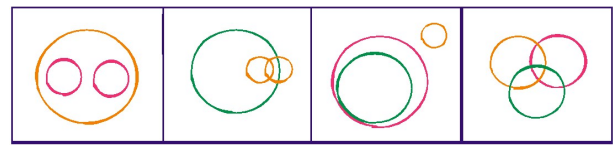
- (a) North
- (b) South
- (c) East
- (d) West-North

26. **Which one of the following diagrams best depicts the relationship among Nation, States, Districts**



- (a)
- (b)
- (c)
- (d)

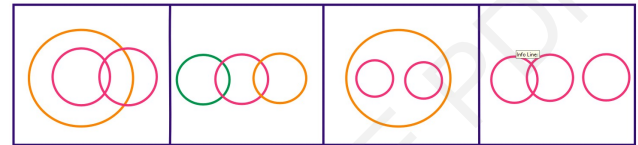
27. **Which one of the following diagrams best depicts the relationship among Sparrows, Birds and Mice**



- (a)
- (b)
- (c)
- (d)

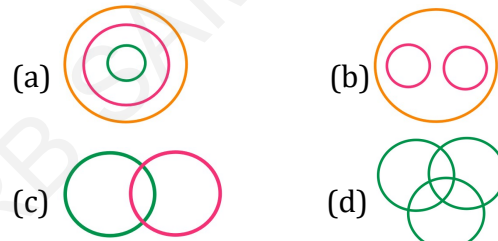
28. **Identify the diagram that best represents the relationship among the given classes.**

Males, Doctors, Brothers



- (a)
- (b)
- (c)
- (d)

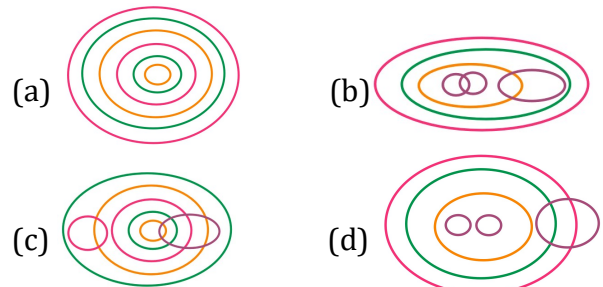
29. **Identify the diagram that best represents the relationship among the classes given below**



Tea, Coffee, and Drink

30. **Which of the following diagrams correctly represents the given statement**

World, Village, State, Universe, District, Country.



31. **Which of the following sets is best represented in the given diagram**



- (a) Animals, Insects, Cockroaches
- (b) Animals, Males, Females and Hermaphrodites
- (c) States, Districts, Union Territories
- (d) Country, States, Districts

81. In the questions below are given statements followed by conclusions. You have to take the given statements to be true even if they seem to be at variance from commonly known facts. Read the conclusions and then decide which of the given conclusions logically follows from the given statements disregarding commonly known facts.

Statements

I. All watches are clocks

II. Some clocks are towers

III. All towers are poles

Conclusions

I. At least Some poles are Clocks

II. All towers being watches is a possibility

Choose the correct option

- (a) Either Conclusion I or II is true
- (b) Both conclusions I and II are true
- (c) Neither conclusion I nor II is true
- (d) Only conclusion II is true

82. Who is the tallest among the brothers A, B, C, D ?

Statement 1: C is shorter than only B

Statement 2: D is taller than only A

Choose the correct option

- (a) Statement 1 alone is sufficient
- (b) Statement 2 alone is sufficient
- (c) Both statement 1 and statement 2 together are sufficient
- (d) Both statement 1 and statement 2 even together are not sufficient

83. What is the value of 'x'?

Statement 1 : $x^2 + x - 6 = 0$

Statement 2 : $x \geq 0$

Choose the correct option

- (a) Statement 1 alone is sufficient
- (b) Statement 2 alone is sufficient
- (c) Both statement 1 and statement 2 together are sufficient
- (d) Both statement 1 and statement 2 even together are not sufficient

84. How much did Mr. Smith spend on his vacation

Statement 1: Mr. Smith spent \$500 on his flight ticket.

Statement 2: Mr. Smith spent \$800 on his hotel stay.

Choose the correct option

- (a) Statement 1 alone is sufficient
- (b) Statement 2 alone is sufficient
- (c) Both statement 1 and statement 2 together are sufficient
- (d) Both statement 1 and statement 2 even together are not sufficient

85. 20 years ago, Antony's age was $\frac{1}{2}$ of what his age now is. What is his age now?

- (a) 20 years
- (b) 40 years
- (c) 35 years
- (d) 30 years

86. A and B are brothers. C and D are sisters. A's son is D's brother. How is B related to C ?

- (a) Father
- (b) Brother
- (c) Uncle
- (d) Grandfather

87. Pointing to a man on the stage, Rashi said, "He is the brother of the daughter of the wife of my husband." How is the man on the stage related to Rashi?

- (a) Son
- (b) Husband
- (c) Cousin
- (d) Nephew

88. How is Rishav's father's wife's father's wife related to Rishav

- (a) Grandmother
- (b) Aunt
- (c) Mother
- (d) Maternal grandmother

89. Pointing to the photograph of a girl Akanksha, Rajeev said, "Her daughter's father's wife's mother is my wife's daughter's mother's mother-in-law." How is Rajeev related to Akanksha

- (a) Father
- (b) Parental uncle
- (c) Maternal Uncle
- (d) Brother

90. Given that

1. A is the mother of B;
 2. C is the son of A;
 3. D is the brother of E;
 4. E is the daughter of B.
- The grandmother of D is

(a) A (b) B (c) C (d) E

91. A, B and C are sisters. D is the brother of E and E is the daughter of B. How is A related to D

(a) Sister (b) Cousin
(c) Niece (d) Aunt

92. R is the son of A's father's sister. S is son of D, who is the mother of G and grandmother of A. H is the father of T and grandfather of R. D is wife of H. How is R related to D

(a) Nephew (b) Son
(c) Grandson (d) Insufficient Data

93. Choose the pair of words in the answer choices that best expresses a relationship SIMILAR to that expressed in the original pair.

ADG: BEH ::

(a) ABC: EFG (b) BCD: DGF
(c) BCD: EDF (d) CFI: DG

94. What is common in the following

Coal: Petroleum : Natural gas

(a) All these are in gaseous state
(b) All these are renewable sources
(c) All these are non-flammable
(d) All these are fossil fuels

95. If all the letters in the word 'BALCONIES' are arranged according to the English alphabetical order, from the left to the right, then which is the seventh letter from the left end of the newly formed sequence

(a) O (b) N (c) L (d) S

96. A person walks 10 m towards south, turns left and walks 15 m. Again turns left and moves on. Now in which direction is he facing?

(a) North (b) South
(c) East (d) West

97. Harihar walks 30 m straight towards south then turns right and walks 25 m. Further he turns left and walks 10m. At last he turns his left. What is the direction now he is facing

(a) West (b) East
(c) North-East (d) South-West

98. D walks 30 m south and then turns left and goes 20m. Again he turns right and walks 30m. Further he turns right. In which direction is he facing?

(a) East (b) West
(c) North (d) North-East

99. Prakash walks 30 m west, then turns left and walks 20 m. Again he turns left and walks 30 m. Finally he turns right and stops. In which direction, is he facing now?

(a) South (b) North
(c) East (d) None of these

100. A man walks 1 km to East and then he turns to South and walks 5 km. Again he turns to East and walks 2 km. After this he turns to North and walks 9 km. Now, how far is he from his starting point

(a) 3 km (b) 4 km
(c) 5 km (d) 7 km

GENERAL AWARENESS

1. North, South, East, and West are all called directions

(a) Important (b) Cardinal
(c) Four (d) Intermediate

2. Which among the following is the bilingual inscription

(a) Girnar Inscription
(b) Kandahar Inscription
(c) Maski Inscription
(d) Beirut Inscription

- 38. What was the name of Gautam Buddha's only son**
(a) Rahul (b) Channa
(c) Kanthala (d) Chunda
- 39. When was the Reserve Bank of India (RBI) established**
(a) 1935 (b) 1957
(c) 1947 (d) 1996
- 40. Who among the following was the author of Kiratarjuniya**
(a) Bharavi (b) Dandin
(c) Varahamihira (d) Kalidasa
- 41. At which of the following sites, all the Paleolithic, Mesolithic and Neolithic sites have been found in sequence**
(a) Sarai Nahar Rai (b) Kurnool Valley
(c) Belan Valley (d) Aahar
- 42. The North pole is**
(a) 90° N latitude (b) 90° S latitude
(c) 90° W Longitude (d) 90° E longitude
- 43. When did the Government of India declare its first Industrial Policy**
(a) 1948 (b) 1956
(c) 1991 (d) 1987
- 44. Which of the following are major indicators used to measure the level of economic development**
(a) Net National Product (NNP)
(b) Per Capita Income (PCI)
(c) Human Development Index (HDI)
(d) All of these
- 45. Which of the following best defines the term 'environment'**
(a) The space around us
(b) The interactions between living and non-living things
(c) The living components of our surroundings
(d) The non-living components of our surroundings
- 46. What are the four phases of the Disaster Management Cycle**
(a) Exploration, Assessment, Action, Resolution
(b) Mitigation, Preparedness, Response, Recovery
(c) Analysis, Planning, Execution, Evaluation
(d) Prevention, Intervention, Relief, Reconstruction
- 47. What is the total number of seat in Lok Sabha as of the General Elections 2024**
(a) 542 (b) 545
(c) 543 (d) 540
- 48. Why human resource is considered necessary for the progress of any country**
(a) Human resource contributes to the collective abilities of people
(b) Human resource enables the production sector to utilize available skills
(c) Human resource enhances technological advancements
(d) Human resource ensures political stability within a country
- 49. 1% of the Earth's volume is the mantle, 84% of the Earth's volume and the remaining 15% is the Earth's atmosphere. Earth's radius in km is**
(a) 7,500 km (b) 6,371 km
(c) 8000 km (d) 6000 km
- 50. The earthquake waves are recorded by an instrument known as**
(a) Speedometer (b) Odometer
(c) Seismograph (d) Richter Scale
- 51. The forces that work on the surface of the earth are called as forces. Also called external forces**
(a) Exothermic forces
(b) Exogenic forces
(c) Endothermic forces
(d) None of these

21-a	22-b	23- a	24-c	25-c	26-c	27-d	28-d	29-b	30-c
31-d	32-d	33- d	34-c	35-b	36- d	37-b	38-c	39-c	40-c
41- d	42-c	43-b	44-c	45- d	46- b	47-c	48- a	49- b	50-d
51-c	52-d	53-c	54- d	55-d	56-a	57- c	58-d	59- c	60- b
61- c	62- d	63-b	64-a	65-b	66- b	67- c	68-c	69- a	70- a
71- a	72-b	73-a	74-b	75-d	76-a	77-c	78-c	79-c	80-a
81-d	82-c	83-d	84-c	85-c	86-c	87-c	88-d	89-d	90-c
91-c	92-a	93-b	94-d	95-b	96-a	97-b	98-c	99-c	100-d

GENERAL INTELLIGENCE AND REASONING

1-c	2-c	3-b	4-b	5-c	6-a	7-c	8-d	9-d	10-c
11-b	12-c	13-a	14-c	15-c	16- b	17-c	18-b	19-b	20-d
21-a	22-b	23-a	24-b	25-c	26-a	27-c	28-a	29-b	30-a
31-c	32-c	33-c	34-b	35-d	36- b	37-d	38-d	39-c	40-b
41- d	42-a	43-d	44-b	45- d	46-b	47-d	48-d	49-d	50-d
51-a	52- b	53-a	54- b	55-a	56- c	57- a	58-d	59- d	60- a
61-b	62-c	63-b	64-d	65-a	66- b	67- d	68-a	69-a	70- d
71- b	72-d	73-d	74-a	75-c	76-b	77-d	78-a	79-a	80-c
81-b	82-a	83-d	84-c	85-b	86-c	87-a	88-d	89-d	90-a
91-d	92-c	93-d	94-d	95-b	96-a	97-b	98-b	99-a	100-c

GENERAL AWARENESS

1-b	2-b	3-d	4-d	5-c	6-c	7-a	8-a	9-c	10-a
11-d	12-a	13-b	14-a	15-c	16-a	17-c	18-a	19-b	20-c
21-b	22-a	23- a	24-b	25-b	26-c	27-a	28-a	29-b	30-a
31-c	32-d	33- c	34-a	35-c	36- c	37-c	38-a	39-a	40-a
41-c	42- a	43-a	44-d	45-a	46- b	47-c	48-a	49- b	50-c
51-b	52- c	53-a	54- b	55-a	56- b	57- c	58-a	59- d	60-c
61- a	62- d	63-d	64-c	65-a	66- a	67-b	68-a	69- a	70-a
71-b	72-d	73-c	74-a	75-b	76-a	77- a	78-c	79-b	80-a
81-b	82-a	83-b	84-c	85-b	86-c	87-c	88-a	89-a	90-b
91-a	92-a	93-a	94-a	95- a	96-a	97-a	98-b	99-a	100-b

GENERAL SCIENCE

1-b	2-b	3-d	4-a	5-a	6-a	7-b	8-a	9-c	10-b
11-d	12-d	13-b	14-a	15-d	16- c	17-b	18-a	19-c	20-b
21-d	22-a	23- c	24-a	25-d	26-b	27-c	28-d	29-b	30-c
31-a	32-c	33-b	34-d	35-a	36-d	37-c	38-d	39-b	40-c
41- a	42- a	43-b	44-a	45- b	46- b	47-d	48- d	49- b	50-b
51-a	52- b	53-b	54- c	55-d	56- a	57- c	58- a	59- b	60- c
61- c	62-b	63-c	64-a	65-c	66- d	67- a	68-c	69- c	70- a
71- b	72-d	73-a	74-c	75-b	76-b	77-c	78-d	79-a	80-c
81-d	82-c	83-d	84-a	85-b	86-a	87-c	88-a	89-d	90-a
91-a	92-b	93-a	94-c	95- b	96-c	97-b	98-c	99-b	100-b



RAILWAY PHARMACIST - 19th JULY 2019

Always a Step Ahead!

SCAN ME



To Join FREE
Online Test

- 1. Calcitonin is secreted by**
(a) Parathyroid (b) Adrenals
(c) Thymus (d) Thyroid
- 2. How much temperature should be maintained during moist heat sterilization**
(a) 151°C (b) 91°C
(c) 121°C (d) 181°C
- 3. Satpura National Park is situated in which State**
(a) Madhya Pradesh (b) Andhra Pradesh
(c) Maharashtra (d) Himachal Pradesh
- 4. "Liquid membrane systems" are also called as**
(a) Aquasomes (b) Nanocapsules
(c) Multiple emulsions (d) Virosomes
- 5. Sigma minus method is used to determine**
(a) Metabolic rate constant
(b) Absorption rate constant
(c) Excretion rate constant
(d) Elimination rate constant
- 6. "Capsid" is present in**
(a) Fungi (b) Virus
(c) Bacteria (d) Protozoa
- 7. Willingness to strive for the goals of a particular group is termed as**
(a) Halo effect (b) Appraisal
(c) Morale (d) Constitution
- 8. Estimation of serum creatinine is considered to be a more reliable indicator for the evaluation of**
(a) Liver function (b) Kidney function
(c) Lung function (d) Gastric function
- 9. In this question, the relationship between different elements is shown in the statement. This Conclusions: Statement B>R>O>W>N**
(i) B > O
(ii) W < R
(iii) B > N
(a) Only (i) and (ii) follow
(b) None follows
(c) All follow
(d) Only (ii) and (iii) follow
- 10. Which one of the following is the basic chemical test to identify anthracene glycosides in Aloes**
(a) Modified Bontrager test
(b) Killer Killiani test
(c) Borntreger test
(d) Legal test
- 11. In a certain code language, if APPLE is coded as SDSHO, then how is DOUBT coded in that language**
(a) RGXWE (b) WLFYG
(c) XFYSH (d) GRXEW
- 12. For the preparation of Cod liver oil emulsion, the ratio of oil: water: gum required is**
(a) 02:02:01 (b) 04:02:01
(c) 01:02:01 (d) 03:02:01
- 13. The ratio of number of girls to boys in a school of 3600 students is 39:41. How many more girls should be admitted to make the ratio 1:12**
(a) 90 (b) 110
(c) 80 (d) 100



RAILWAY PHARMACIST - 21st JULY 2019

Always a Step Ahead!

SCAN ME



To Join FREE
Online Test

- What is the SI unit of Pressure**
(a) Joule (b) Henry
(c) Pascal (d) Hertz
- The ability of the eye lens to adjust its focal length is called _____**
(a) Modulation (b) Focal length
(c) Accommodation (d) Magnification
- The Objects in motion on ground level possess _____ energy. (Taking ground level as 0 potential)**
(a) Potential (b) Frictional
(c) Kinetic (d) Gravitational
- The process of transferring of charge from a charged object to the earth is called _____**
(a) Discharging (b) Charging
(c) Skimming (d) Earthing
- What is the symbol of the element Tin**
(a) Tn (b) Ti (c) Sn (d) Si
- Reduction in chemical reactions is the _____**
(a) Gain of oxygen (b) Loss of hydrogen
(c) Gain of hydrogen (d) Gain of nitrogen
- Which of the following elements is a diatomic molecule**
(a) Argon (b) Chlorine
(c) Phosphorous (d) Sulphur
- Cranial nerves arises from the _____**
(a) Heart (b) Kidney
(c) Lungs (d) Brain
- Cells are enclosed by a plasma membrane composed mainly of _____ and _____**
(a) Lipids and emulsified fats
(b) Proteins and emulsified fats
(c) Lipids and proteins
(d) Fats and carbohydrates
- Who discovered Penicillin vaccine**
(a) Alexander Fleming (b) Edward Jenner
(c) Watson and Crick (d) Robert Koch
- In a certain code language, if ALLOW is coded as ODOZR, then how is DELAY coded in that language**
(a) GHODB (b) HGOBD
(c) CEPIH (d) WVOZB
- “Find the next number in the series. 4, 9, 20, 43, 90, ?”**
(a) 185 (b) 175 (c) 5 (d) 205
- In this question, relationship between different elements is shown in the statement. This statement is followed by three conclusions. Assume the given statement to be true and choose the answer from the given options**
Statement $F = L < A < R > E$
Conclusions
(i) $A > E$ (ii) $F < R$ (iii) $L > E$
(a) Only (ii) and (iii) follow
(b) Only (i) and (ii) follow
(c) All follow
(d) Only (ii) follows
- A woman stands on the road facing South direction. She turns 72 degrees in clockwise direction and 162 degrees in anti-clockwise direction. Which direction is she facing now**
(a) West (b) East
(c) North (d) South



RAILWAY PHARMACIST-2016

Always a Step Ahead!

SCAN ME



To Join FREE
Online Test

- Which drugs cause osteoporosis on long-term use**
(a) Estrogen (b) Progesterone
(c) GnRH analogues (d) Warfarin
- Confirmation of drugs is commonly determined**
(a) NMR (b) NMI
(c) Mass spectrometry (d) pH determination
- Life of Red Blood Corpuscle (RBC) present in human blood is**
(a) 30 days (b) 90 days
(c) 120 days (d) 150 days
- Junk e-mail is also called**
(a) Snifer script (b) Spof
(c) Spam (d) Spol
- As per the Drugs and Cosmetic Act chemist and druggist means, premises for sale of drug which have**
(a) Qualified person and drugs are compounded
(b) Qualified person but drugs are not compounded
(c) Compounding facilities but qualified person is not needed
(d) Any experience holding person who can formulate compositions
- The usual source of heparin**
(a) Blood
(b) Fish
(c) Tissues of domestic mammals
(d) Plants
- Which vitamin is used occasionally as an antioxidant**
(a) Vitamin D (b) Vitamin K
(c) Vitamin B₁ (d) Vitamin E
- In a computer architecture, a bus is**
(a) A collection of various software
(b) A collection of various computers
(c) Collection of shared communication wires
(d) None of the above
- Blood group "B" person can receive blood from persons of Blood group**
(a) AB (b) B alone
(c) A, B and O (d) O and B
- Betadine contains**
(a) 5% of available iodine in complex form
(b) 10% of available iodine in complex form
(c) 20% of available iodine in complex form
(d) 2% of available iodine in complex form
- Dosage of drugs is determined by the following except**
(a) Volume of distribution
(b) Half-life
(c) Lipid solubility
(d) Excretion of drug
- Under Drugs and Pharmacist Act, Schedule FF contains the list of the following**
(a) Drugs which can be marked under generic names only
(b) Drugs which are habit forming
(c) Standards for ophthalmic preparation
(d) Drugs which are exempt from certain provisions applicable to manufacturing



RAILWAY PHARMACIST - 08th FEBRUARY 2015

Always a Step Ahead!

SCAN ME



To Join FREE
Online Test

- Which of the following is not a bone in the human body**
(a) Sternum (b) Humerus
(c) Pericardium (d) Tibia
- Rennin and lactase, the enzymes required to digest milk, disappear in the human body by the age of**
(a) Two (b) Three
(c) Five (d) Eight
- Duodenum is situated**
(a) At the uppermost part of the small intestine
(b) Near the lungs
(c) In the brain
(d) At the tail end of the intestine
- The heart is covered by a membrane called**
(a) Epidermis (b) Dermis
(c) Epicardium (d) Pericardium
- About ____ of the total calcium present in the human body is in the blood**
(a) 99% (b) 70%
(c) 5% (d) 1%
- Phenylketonuria is an example of an inborn error of metabolism. This refers to**
(a) Hormonal overproduction
(b) Non-disjunction
(c) Atrophy of endocrine glands
(d) Inherited lack of an enzyme
- As in the arms and legs, blood flows against gravity and is prevented from flowing back by**
(a) The extremely low pressure of venous blood
(b) Valves
(c) Movements in the surrounding muscles
(d) The narrowing down of the lumen of veins by the contraction of the muscle layer comprising their walls
- Identical twins arise when two**
(a) Cells develop independently from the same zygote
(b) Gametes develop independently
(c) Sperms develop independently
(d) Ova develop independently
- Element that is not found in blood is**
(a) Iron (b) Copper
(c) Chromium (d) Magnesium
- Scratching eases itching because**
(a) It kills germs
(b) It suppresses the production of enzymes which cause itching
(c) It removes the outer dust in the skin
(d) It stimulates certain nerves which direct the brain to increase the production of antihistaminic chemicals
- The gland, which in relation to body size is largest at birth and then gradually shrinks after puberty, is**
(a) Thyroid (b) Pituitary
(c) Thymus (d) Adrenal
- A human sperm may contain**
(1) X-chromosome
(2) Y-chromosome
(3) XY-chromosome
(a) 1 only (b) 2 only
(c) 1 and 2 (d) 1, 2 and 3



RAILWAY PHARMCIST - 3rd SEPTEMBER 2015

Always a Step Ahead!

SCAN ME



To Join FREE
Online Test

- The breakdown of glucose to pyruvic acid is called**
(a) Glycolysis (b) Glucogenesis
(c) Glycogenolysis (d) TCA cycle
- Rashi walked 20 m towards north. Then he turned right and walks 30 m. Then he turns right and walks 35 m. Then he turns left and walks 15 m. Finally she turns left and walks 15 m. In which direction and how many metres is she from the starting position**
(a) 15 m West (b) 30 m East
(c) 30 m West (d) 45 East
- In Dengue fever, the count of the following drops drastically**
(a) Lymphocytes (b) RBCs
(c) Platelets (d) ESR
- Ampicillin is degraded by the process of**
(a) Decarboxylation (b) Hydrolysis
(c) Oxidation (d) Isomerization
- Which of the following statements is true**
(a) Computer scientists are researching on making a "Turing Complete" machine
(b) All modern computers are "Turing Complete machines
(c) According to Godel's Theorem, it is impossible to construct a "Turing Complete machine
(d) Charles Babbage was the first person to build a "Turing Complete Computer
- In human body "Thorax" is the portion related to-**
(a) Thyroid gland (b) Chest
(c) Knees (d) Throat
- In Arunachal Pradesh (AP), the sun rises two hours before it does in Dwarka (Gujarat). This is because**
(a) Dwarka is at a higher altitude than AP
(b) Dwarka is at a lower altitude than AP
(c) Dwarka is future east of AP
(d) Dwarka is further west of AP
- Polio vaccine can be administered by _____ route in newborn.**
(a) IM (b) SC
(c) Topical (d) Oral
- Disease is related to Hospital as Machine breakdown is related to**
(a) Mechanic (b) Workshop
(c) Tools (d) Spare parts
- A playful monkey sees a ladder which has 10 steps. He climbs 3 steps up and two steps down successively, taking one second to climb up 3 steps and another second to come down 2 steps. After how many seconds will he reach the tenth step**
(a) 20 (b) 18 (c) 17 (d) 15
- Amoxicillin is combined with clavulanic acid to inhibit**
(a) DNA gyrase
(b) Cell wall synthesis
(c) Protein synthesis
(d) β -lactamase enzymes
- There are 7 coins on a table. There are two players A and B. A player can take one or two coins at a time. They take their turns alternately. The person who takes the last coin in the loser. If A starts first**
(a) A can always win by taking 2 coins is the first move



RAILWAY PHARMACIST-2012

Always a Step Ahead!

SCAN ME



To Join FREE
Online Test

- An emulsion is a colloid of a**
(a) Gas in a liquid (b) Liquid in a liquid
(c) Liquid in a gas (d) Gas in a solid
- Percentage of carbon in steel ranges from**
(a) 0.1 to 1.5 (b) 1.5 to 3.0
(c) 3.0 to 4.0 (d) 4.0 to 6.0
- Which of the following is not present in German-silver**
(a) Copper (b) Nickel
(c) Silver (d) Zinc
- According to the latest estimates, the literacy rate (% of population) in India is**
(a) 63% (b) 65% (c) 67% (d) 68%
- Who won the U.S. Open (Lawn Tennis) in September 2007**
(a) Novak Djokovic
(b) Roger Federer
(c) Rafael Nadal
(d) None of the above
- Who propounded the theory of 'Economic Drain of India' during British imperialism?**
(a) W. C. Bannerji
(b) Dadabhai Naoroji
(c) Gopalkrishna Gokhale
(d) Gandhiji
- First Indian Commander-in-Chief was**
(a) Gen. K.S. Thimayya
(b) Gen. K. M. Kariappa
(c) S. H. F. J. Manekshaw
(d) None of the above
- A computer virus is**
(a) A chemical that attacks silicon.
(b) A micro-organism that destroys integrated circuits
(c) Data that the computer fails to handle
(d) A special kind of computer programme
- India has a coastline of**
(a) 5500 km (b) 6500 km
(c) 7500 km (d) 8400 km
- Jawahar Tunnel, the largest in India is located in the State of**
(a) Jammu & Kashmir (b) Maharashtra
(c) Karnataka (d) Himachal Pradesh
- The most literate union territory in India is**
(a) Delhi (b) Lakshadweep
(c) Chandigarh (d) Puducherry
- Which of the following is the smallest Parliamentary Constituency in terms of area**
(a) Chandni Chowk (Delhi)
(b) Sadar (Delhi)
(c) Kolkata North West
(d) Mumbai South
- Who is the author of the book 'Two Lives'**
(a) Vikram Seth (b) James Patterson
(c) Ved Mehta (d) Khushwant Singh
- Which of the following sets of countries are referred to as 'The Golden Crescent' the largest opium industry in the world**
(a) Myanmar, Laos and Thailand
(b) Afghanistan, Iran and Iraq
(c) Afghanistan, Pakistan and Iran
(d) Myanmar, Malaysia and Thailand
- Which is the anti-coagulant substance in blood**
(a) Fibrinogen (b) Heparin
(c) Thrombin (d) Globin



MODEL PAPER - 1

Always a Step Ahead!

- Which of the following capsule size has the smallest capacity
(a) 5 (b) 1 (c) 0 (d) 000
- The quickest absorption of drugs takes place by
(a) Oral route (b) I.M. route
(c) I.V. route (d) Inhalation
- The pressurized dosage form meant for administration in to respiratory tract in the form of fine particles are
(a) Aerosols (b) Pressurizer
(c) Nebulizers (d) None of these
- SOS means which one of the followings
(a) Take occasionally
(b) Take immediately
(c) Take when necessary
(d) Take as directed
- Which one of the following formulations provides the slowest rate of drug absorption as compared with the others
(a) Syrup (b) Elixir
(c) Aqueous solution (d) Tablet
- Which of the following drugs can be marketed under generic name
(a) Aspirin (b) Paracetamol
(c) Ibuprofen (d) Diazepam
- Licence to operate "Blood Bank" is granted by
(a) Director of Medical and Health Services of the State
(b) Medical Council of State
(c) Drug Licencing Authority of State
(d) Chief Medical and Health Officer of the concerned district
- The minimum age prescribed for registration of pharmacist is
(a) 16 years (b) 18 years
(c) 21 years (d) No age bar
- Tobacco contains a poisonous substance called
(a) Nicotine (b) Narcotics
(c) Alcohol (d) Caffeine
- A disease caused by allergic disease is called
(a) Asthma (b) Tuberculosis
(c) Cancer (d) Gastroenteritis
- The energy value of is more than that of others
(a) Fats (b) Starch
(c) Protein (d) Sugar
- The product formed when amino acid molecules combine together is called
(a) Nucleic acid (b) Starch
(c) Carbohydrate (d) Proteins
- Labour takes place after days of last menstrual period
(a) 300 (b) 280
(c) 365 (d) 240
- Pharmacy ACT passed on
(a) 4 march 1940 (b) 5 march 1940
(c) 4 march 1948 (d) 5 march 1948
- The optically inactive amino acid is
(a) Glycine (b) Serine
(c) Threonine (d) Valine
- Six edition of Indian Pharmacopoeia was published in year
(a) 1997 (b) 2007
(c) 2010 (d) 1986



MODEL PAPER - 2

Always a Step Ahead!

SCAN ME



To Join FREE
Online Test

- To which of the following Trichomes of Senna belongs**
 - Unicellular
 - Short
 - Multicellular
 - Trichomes are absent
- Which part of Rheum palmatum does Rhubarb consists**
 - Seeds
 - Roots
 - Rhizomes
 - Whole plant
- Puncture vine is the synonym of**
 - Gokhru
 - Punarnava
 - Gymnema
 - Ipecac
- Which constituent of Shatavari is having, anti-oxytocic property**
 - Shatavarin -I
 - Shatavarin -II
 - Shatavarin -III
 - Shatavarin -IV
- Cascara belongs to the family**
 - Liliaceae
 - Leguminosae
 - Rhamnaceae
 - Apocynaceae
- Ophthalmic solution is sterilized by**
 - Autoclave
 - Hot air oven
 - Both (a) and (b)
 - Bacterial filters
- Viscosity enhancer in ophthalmic preparation is**
 - Poly vinyl alcohol
 - Povidone
 - Dextran
 - Macrogol
- The most common form of malnutrition are the following except**
 - Beri-beri
 - Protein energy malnutrition
 - Marasmus
 - Kwashiorkor
- The following organs are situated in the abdominal cavity except**
 - Stomach
 - Oesophagus
 - Liver
 - Spleen
- The nerve, which carries messages from the brain and spinal cord muscles and glands**
 - Motor nerve
 - Sensory nerve
 - Mixed nerve
 - Autonomic nerve
- Speech centre is situated in**
 - Parietal lobe
 - Frontal lobe
 - Occipital lobe
 - Temporal lobe
- Starting of menstrual cycle is called**
 - Ovulation
 - Menstruation
 - Menarche
 - Menopause
- The MTP act was passed in the year**
 - 1975
 - 1971
 - 1986
 - 2000
- A vasodilating compound is produced by the decarboxylation of the amino acid**
 - Arginine
 - Aspartic acid
 - Glutamine
 - Histidine
- The following form of vitamin A is used in the visual cycle**
 - Retinol
 - Retinoic acid
 - Retinaldehyde
 - Retinyl acetate
- Porphyrin synthesis is inhibited in**
 - Mercury poisoning
 - Lead poisoning
 - Manganese poisoning
 - Barium poisoning



MODEL PAPER - 3

Always a Step Ahead!

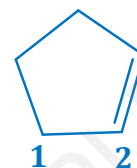
- Sulphur containing amino acid is**
(a) Methionine (b) Leucine
(c) Valine (d) Asparagine
- The protein present in hair is**
(a) Keratin (b) Elastin
(c) Myosin (d) Tropocollagen
- Which one of the followings is used as systemic alkalizer**
(a) Sodium chloride (b) Sodium bicarbonate
(c) Sodium sulphate (d) Sodium acetate
- One of the following will give "Molisch test"**
(a) Protein (b) Lipids
(c) Glucose (d) Flavo proteins
- Differences in bioavailability are most frequently observed with drugs administered by following routes**
(a) Subcutaneous (b) Intravenous
(c) Oral (d) Sublingual
- An absorption process is not involved when a drug is given by following route**
(a) Oral (b) Intramuscular
(c) Intravenous (d) Sublingual
- In which form the drug is absorbed more rapidly**
(a) In aqueous solution
(b) In suspension
(c) In oily solution
(d) In solid form
- Trachoma is a disease related to**
(a) Eyes (b) Ears
(c) Nose (d) Throat
- Leprosy should be treated for a minimum period of**
(a) Lifelong (b) 20 yrs
(c) 5 yrs (d) 6-12 months
- Goiter is related to the gland**
(a) Pancreas (b) Thyroid
(c) Parotid (d) Adrenals
- Diabetes is caused due to deficiency of**
(a) Insulin (b) Ptyalin
(c) Thyroxin (d) Glucagon
- Biological control of mosquitoes is by using**
(a) Minerals oils (b) Fishes
(c) Insecticides (d) All of these
- Zinc phosphide is an efficient**
(a) Rodenticide (b) Insecticide
(c) Bactericide (d) Disinfectant
- The normal human body contains**
(a) 20 chromosomes (b) 25 chromosomes
(c) 36 chromosomes (d) 46 chromosomes
- Among the blood groups the blood group considered as the universal donor is**
(a) A group (b) B group
(c) AB group (d) O group
- The sex chromosome composition of XO is related to**
(a) Turners syndrome
(b) Klinefelter syndrome
(c) Super female
(d) None of these
- Erythroblastosis foetalis is a disease related to**
(a) Blood groups (b) Red blood cells
(c) White blood cells (d) Platelets



MODEL PAPER - 4

Always a Step Ahead!

- Hydrogen peroxide is used as**
(a) Antiseptic (b) Acidifying agent
(c) Protective (d) Antioxidant
- In limit test for iron purple color is due to formation of**
(a) Ferrous mercaptoacetate
(b) Lead mercaptoacetate
(c) Ferrous sulphate
(d) Ferrous ammonium sulphate
- Family of measles virus is**
(a) Paramyxoviridae
(b) Rhabdoviridae
(c) Orthomyxoviridae
(d) Flaviviridae
- In Type I hypersensitivity, the predominant antibody that is elicited is**
(a) IgA (b) IgE (c) IgG (d) IgM
- Which method will you see to detect antigens directly from tissue**
(a) ELISA
(b) Ouchterlony technique
(c) Immunofluorescence
(d) Complement fixation
- The hybridization of the central carbon in $\text{CH}_3\text{Ca}^{\ominus}\text{N}$ and the bond angle CCN are**
(a) sp^2 , 180° (b) sp , 180°
(c) sp^2 , 120° (d) sp^3 , 109°
- Which molecule has the largest dipole moment**
(a) HCl (b) CCl_4
(c) H_2S (d) CO_2
- What are the hybridizations of carbon 1 and 2 respectively in the following**



- The average pH of Urine is**
(a) sp^3 and sp^2 (b) sp^2 and sp^3
(c) sp^3 and sp (d) sp^2 and sp^2
- Visual pigments are derivatives of the compound**
(a) Retinal (b) Opsin
(c) Rhodopsin (d) Transducin
- A pigment synthesized from vitamin A is**
(a) Retinal (b) Opsin
(c) Rhodopsin (d) Transducin
- Stem cells that can form all types of lymphocytes are concentrated in the**
(a) Circulation (b) Thymus
(c) Red marrow (d) Spleen
- Granulocytes form in**
(a) Intestines (b) Spleen
(c) Thymus (d) Red bone marrow
- Red blood cell production is regulated by the hormone**
(a) Thymosin (b) Angiotensin
(c) Erythropoietin (d) M-CSF
- Painful Micturition**
(a) Eneuresis (b) Dysuria
(c) Retention of urine (d) Diarrhoea
- Hormone secreted by the testes**
(a) Estrogen (b) Pitocin
(c) Androgens (d) Progesterone



MODEL PAPER - 5

Always a Step Ahead!

SCAN ME



To Join FREE
Online Test

- Which of the following cycloalkanes has the MOST strain energy**
(a) Cyclobutane (b) Cyclopentane
(c) Cyclohexane (d) Cycloheptane
- Which of the following compounds does NOT undergo mutarotation**
(a) Glucose (b) Sucrose
(c) Ribose (d) Fructose
- Time required to measure the Mantoux test**
(a) 24 to 48 hrs (b) 48 to 72 hrs
(c) 10 to 12 hrs (d) 2 to 4 hrs
- Name of the oral Polio Vaccine**
(a) BCG (b) TAB
(c) Salk (d) Sabin
- The blood group contain no antibodies**
(a) A (b) B
(c) O (d) AB
- Which is example for the disease caused by bacteria**
(a) Cold (b) Typhoid
(c) Typhus fever (d) Chicken pox
- Radioactive cobalt and radium are used for the treatment of _____ diseases**
(a) Cholera (b) Haemophilia
(c) Cancer (d) Sickle cell anaemia
- Prevalence of T.B. infection in a community is estimated by**
(a) Tuberculin test (b) Sputum microscopy
(c) Culture (d) Chest X-ray
- Clinical trials for the import and manufacture of new drugs are to be carried out as per**
(a) Schedule C and C1 (b) UGC guidelines
(c) Schedule Y (d) Schedule M
- Therapeutic drug monitoring must be done for**
(a) Penicillin (b) Lithium
(c) Erythromycin (d) Lignocaine
- Causative organism of diphtheria**
(a) Mycobacteria
(b) Streptococcus
(c) *Corynebacterium diphtheriae*
(d) Staphylococcus
- Incubation period of measles**
(a) 1-7 days (b) 7-14 days
(c) 14-21 days (d) 21-28 days
- Thiomersal is belongs to which category preservative**
(a) Acidic
(b) Neutral
(c) Mercurial
(d) Quaternary ammonium compounds
- Benzalkonium chloride is categorized as**
(a) Acidic preservative
(b) Neutral preservative
(c) Mercurial preservative
(d) Quaternary ammonium compounds
- At which concentration, phenol act as preservative**
(a) 0.2 - 0.5 (b) 0.5 - 0.8
(c) 0.05 - 0.1 (d) None of these
- Which of the following flavor is NOT responsible for sour taste**
(a) Citrus flavors (b) Licorice
(c) Raspberry (d) Mint spice

ABOUT THE BOOK

We are pleased to introduce the First edition of **"SURE SHOT RAILWAY PHARMACIST SOLVED PAPERS"** for the students preparing for RAILWAY PHARMACIST EXAM. This book consist of Subjectwise, Previous Year content and Model Paper i.e. most important MCQs which can play an important role to boost your exam preparation. We have made considerable efforts to update each and every chapter questions and ensure the content is relevant to current practice.



only one dream

TO CRACK RAILWAY PHARMACIST EXAM

Lets Do It



India's
**MOST DOWNLOADED
Pharma App**

Download India's Most Downloaded App to Get Free Study Material,
Flash Card, e-Notes, Digesters, Online Test Series

Scan QR Code to download the APP



GET IT ON
Google Play

Download on the
App Store

GPAT DISCUSSION CENTER

Head Office : A-17, Rajaswa Colony, Ashok Nagar,
New Sarkanda, Bilaspur (C.G.)

Phone : 9770765680, 8602227444

E-mail: gdcgpat037@gmail.com

Website : www.gdclive.com | www.gdconlinetest.in



ISBN : 978-81-973484-0-2



9 788197 348402

Price : ₹ 500.00